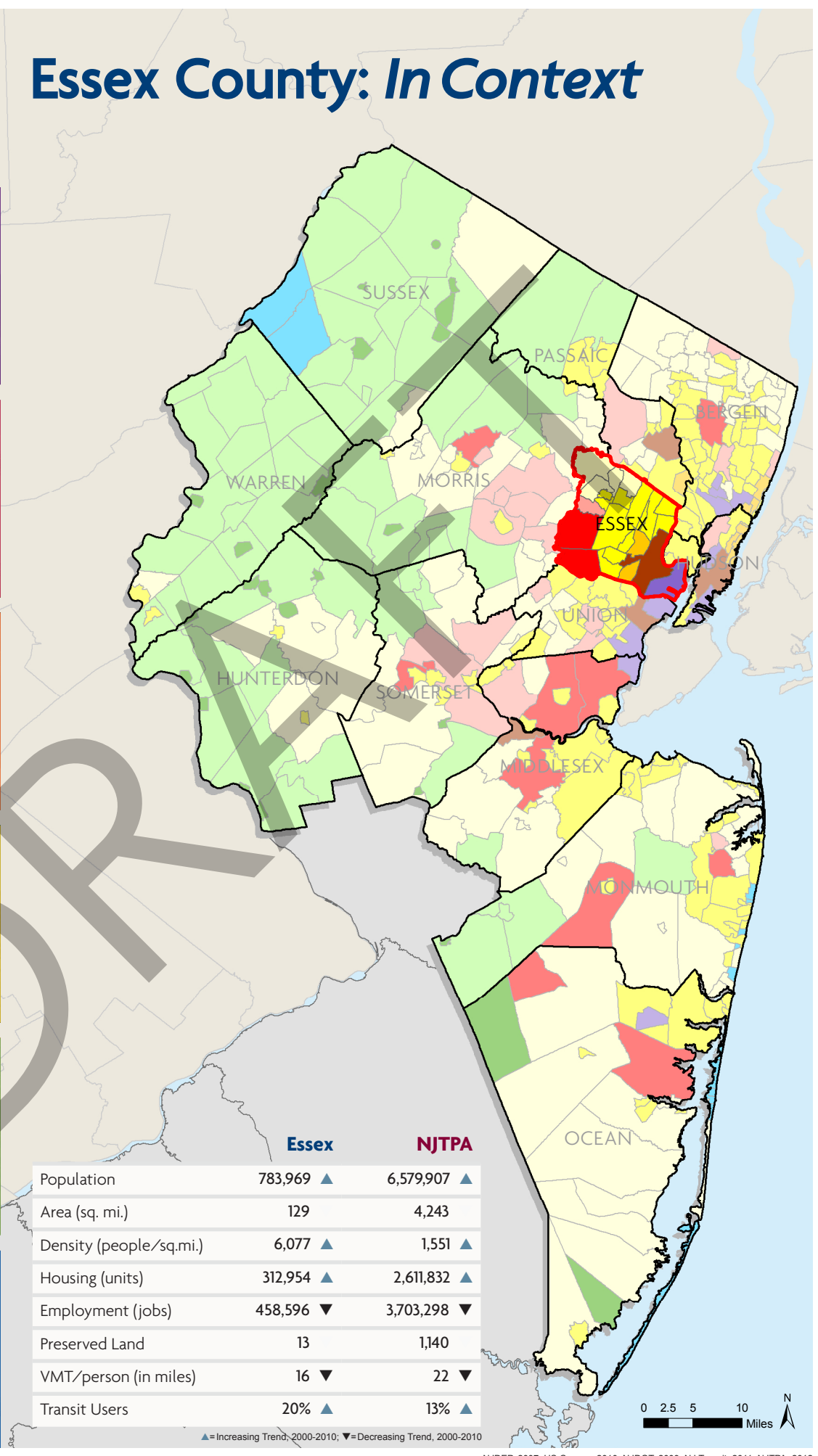
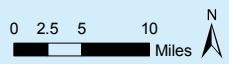


# Essex County: In Context

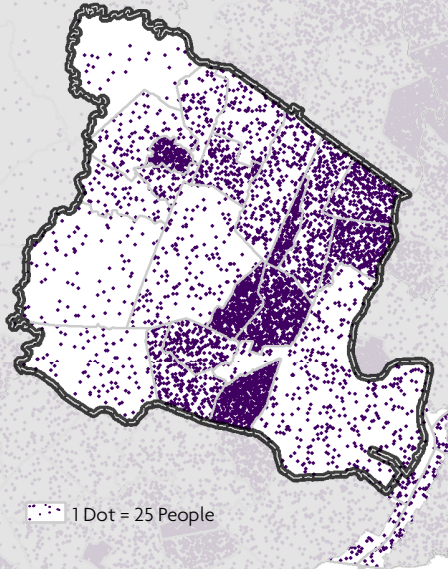


	Essex	NJTPA
Population	783,969 ▲	6,579,907 ▲
Area (sq. mi.)	129	4,243
Density (people/sq.mi.)	6,077 ▲	1,551 ▲
Housing (units)	312,954 ▲	2,611,832 ▲
Employment (jobs)	458,596 ▼	3,703,298 ▼
Preserved Land	13	1,140
VMT/person (in miles)	16 ▼	22 ▼
Transit Users	20% ▲	13% ▲

▲=Increasing Trend, 2000-2010; ▼=Decreasing Trend, 2000-2010

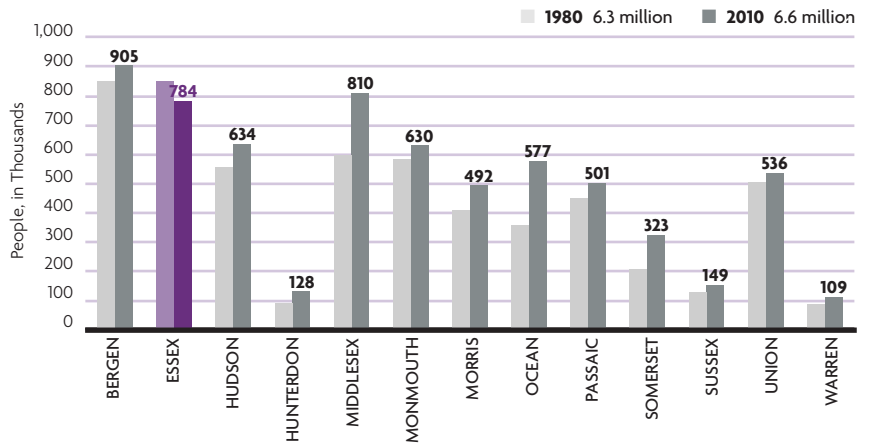


Population Density, 2010



U.S. Census Bureau, 2010

Population, NJTPA Region



Population 65 years and older **12%**  
 People with disabilities **9%**  
 Minority population **67%**  
 Poverty rate **17%**

U.S. Census Bureau, 2010

Total Jobs: 458,596 (12% of the region)

Wage and salary workers 373,047  
 Self-employed workers 85,549

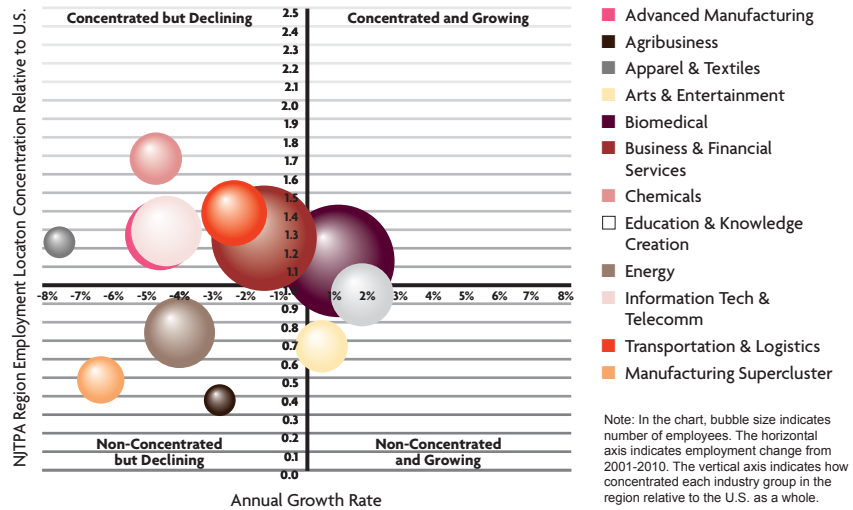
Top Essex Employers

RANK	TOP EMPLOYERS IN 2009	NUMBER EMPLOYEES	TREND
1	Retail trade	56,681	▼
2	Professional, scientific, and technical services	37,506	▼
3	Transportation and warehousing	34,273	▼
4	Retail trade	32,507	▼
5	Finance and insurance	31,423	▲
6	Administrative and waste management services	27,377	▼
7	Other services, except public administration	23,985	▼
8	Manufacturing	22,111	▼
9	Real estate and rental and leasing	20,556	▼
10	Accommodation and food services	19,897	▼

▲=Increasing Trend, 2008-2009; ▼=Decreasing Trend, 2008-2009

U.S. Bureau of Economic Analysis, 2009

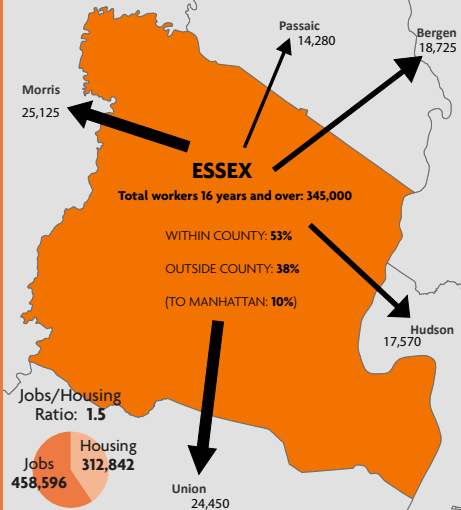
NJTPA Region Key Industry Groups Analysis 2001-2010



U.S. Bureau of Labor Statistics, Quarterly Census of Employment & Wages (QCEW) and Purdue Center for Regional Development (cluster definitions), 2010

Commute to Work

Total average daily commuters

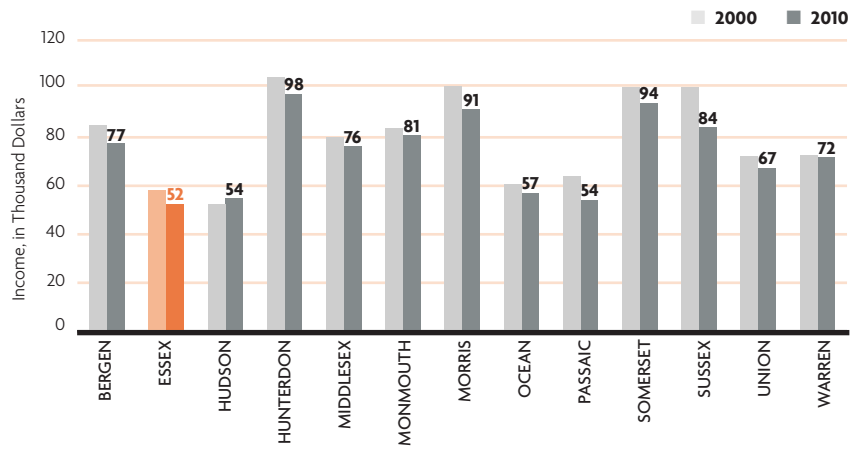


U.S. Census Bureau, 2009; U.S. Bureau of Economic Analysis, 2009

Census Transportation Planning Package, 2006-08

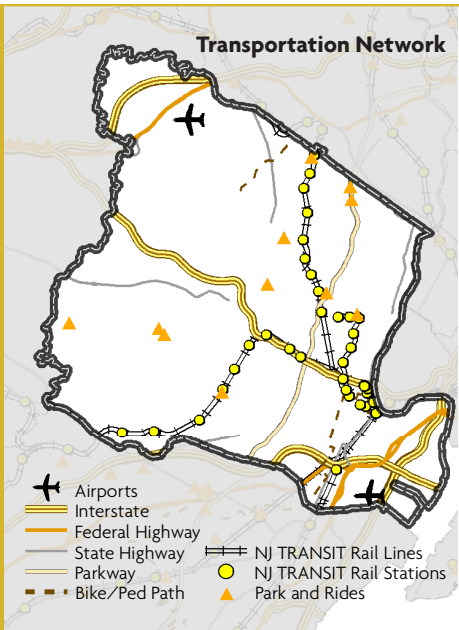
Median Household Income, NJTPA Region

In 2010 inflation-adjusted dollars



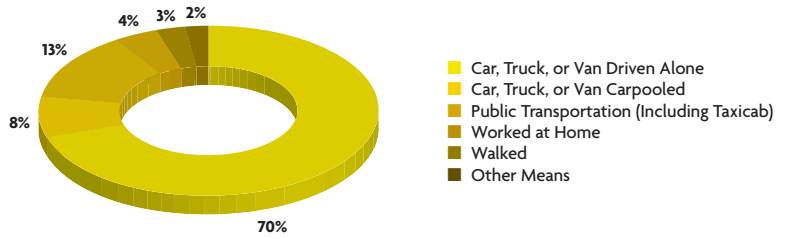
U.S. Census Bureau, 2010

Transportation



NJDOT, 2009; NJ Transit, 2011

Means of Transportation to Work, NJTPA Region



Average Time to Work  
 Essex County: 32 minutes ▲  
 NJTPA: 31 minutes ▲

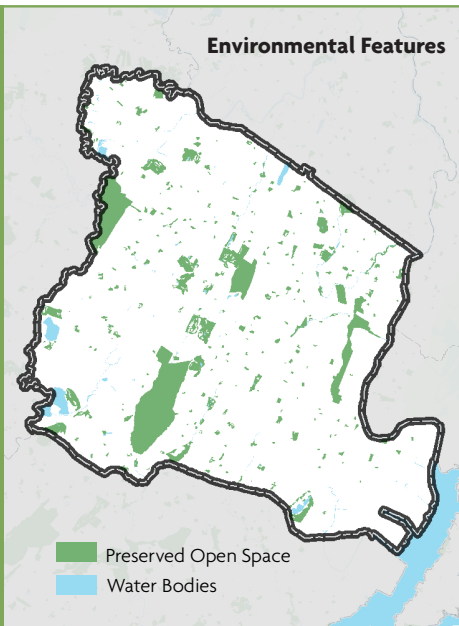
U.S. Census Bureau, 2010

Vehicle Miles Traveled

NJTPA Region			Essex County		
2001	2005	2009	2001	2005	2009
132,927,432 ▲	144,813,766 ▲	144,379,326 ▼	12,716,517 ▲	12,779,935 ▼	12,787,317 ▼

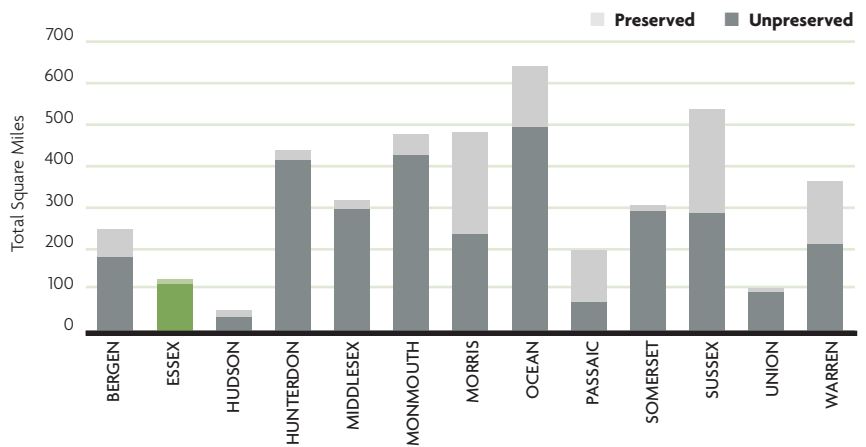
NJDOT, 2009

Environment



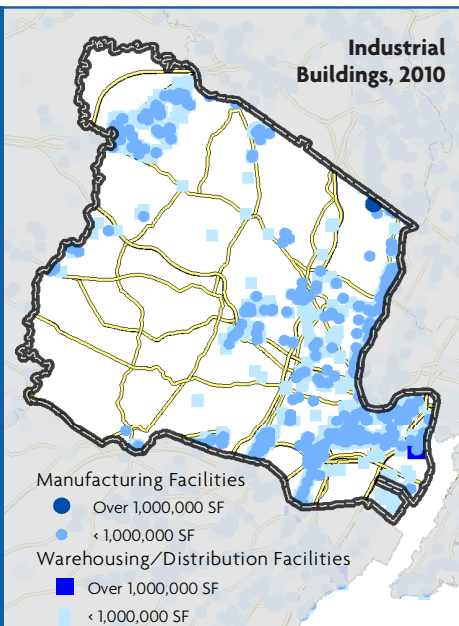
NJDEP, Highlands, Meadowlands, & Pinelands, 2007; US Census, 2010

Preserved and Unpreserved Land, NJTPA Region



NJDEP, Highlands, Meadowlands, & Pinelands, 2007; US Census, 2010

Commodities



CB Richard Ellis, 2011

Top 5 Facilities By Inbound/Outbound, Tonnage, 2007

COMPANY NAME	CITY	INBOUND TONS
Mac Arthur Petroleum & Solvent	Newark	4,547,587
Am Topp Corp	Livingston	2,924,409
Innovation Fuels Inc	Newark	1,139,611
Atlantic Fuel Co	Newark	997,160
Orange-Alden Fuel Co	East Orange	949,676

COMPANY NAME	CITY	OUTBOUND TONS
Sims Metal Mgmt Northeast Inc	Newark	697,812
Innovation Fuels Inc	Newark	449,558
Anheuser-Busch Co	Newark	426,334
Joyce Food Llc	Newark	406,553
Atlantic Fuel Co	Newark	323,687

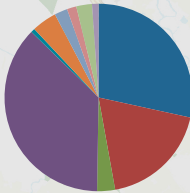
IHS Global Insight Freight Locator Database, 2007

# Essex County

## NJTPA Regional Transportation Investment

Transportation Improvement Projects

- Bridges (28.4%)
- Road Enhancement (18.7%)
- Road Expansion (3.1%)
- Transit Enhancement (37.1%)
- Transit Expansion (0.7%)
- Freight (4.3%)
- ITS (2.2%)
- TDM (1.6%)
- Safety (2.7%)
- Bike/Ped (1.1%)



## Land Use

- ▨ Port Newark
- Developed Land
- Undeveloped & Unpreserved Land

## Economic

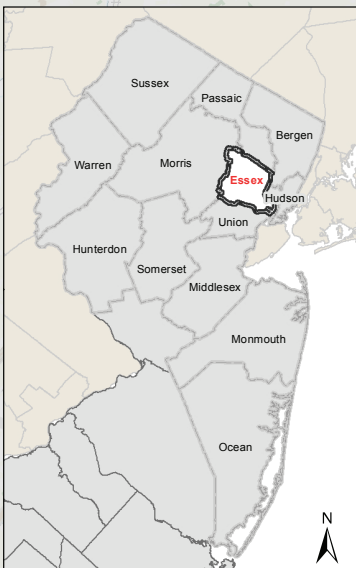
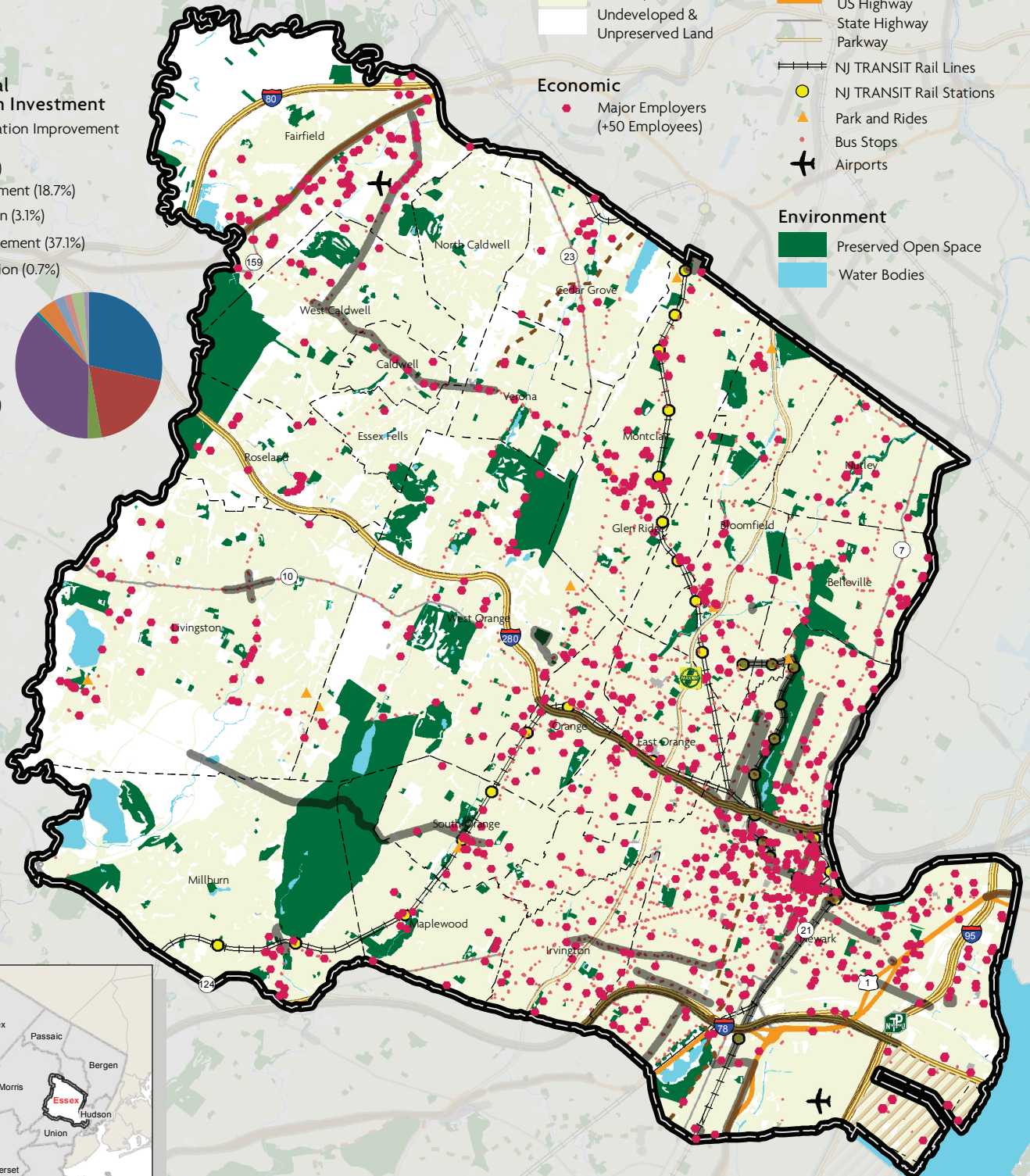
- Major Employers (+50 Employees)

## Transportation

- Bike/Pedestrian Path
- Interstate
- US Highway
- State Highway
- Parkway
- NJ TRANSIT Rail Lines
- NJ TRANSIT Rail Stations
- ▲ Park and Rides
- Bus Stops
- ✈ Airports

## Environment

- Preserved Open Space
- Water Bodies



## NORTH JERSEY TRANSPORTATION PLANNING AUTHORITY

One Newark Center, 17th Floor  
Newark, NJ 07102  
973-639-8400 | Fax: 973-639-1953

[www.njtpa.org](http://www.njtpa.org)

This publication was prepared by the North Jersey Transportation Planning Authority with funding from the Federal Transit Administration and the Federal Highway Administration. The NJTPA is solely responsible for its contents.