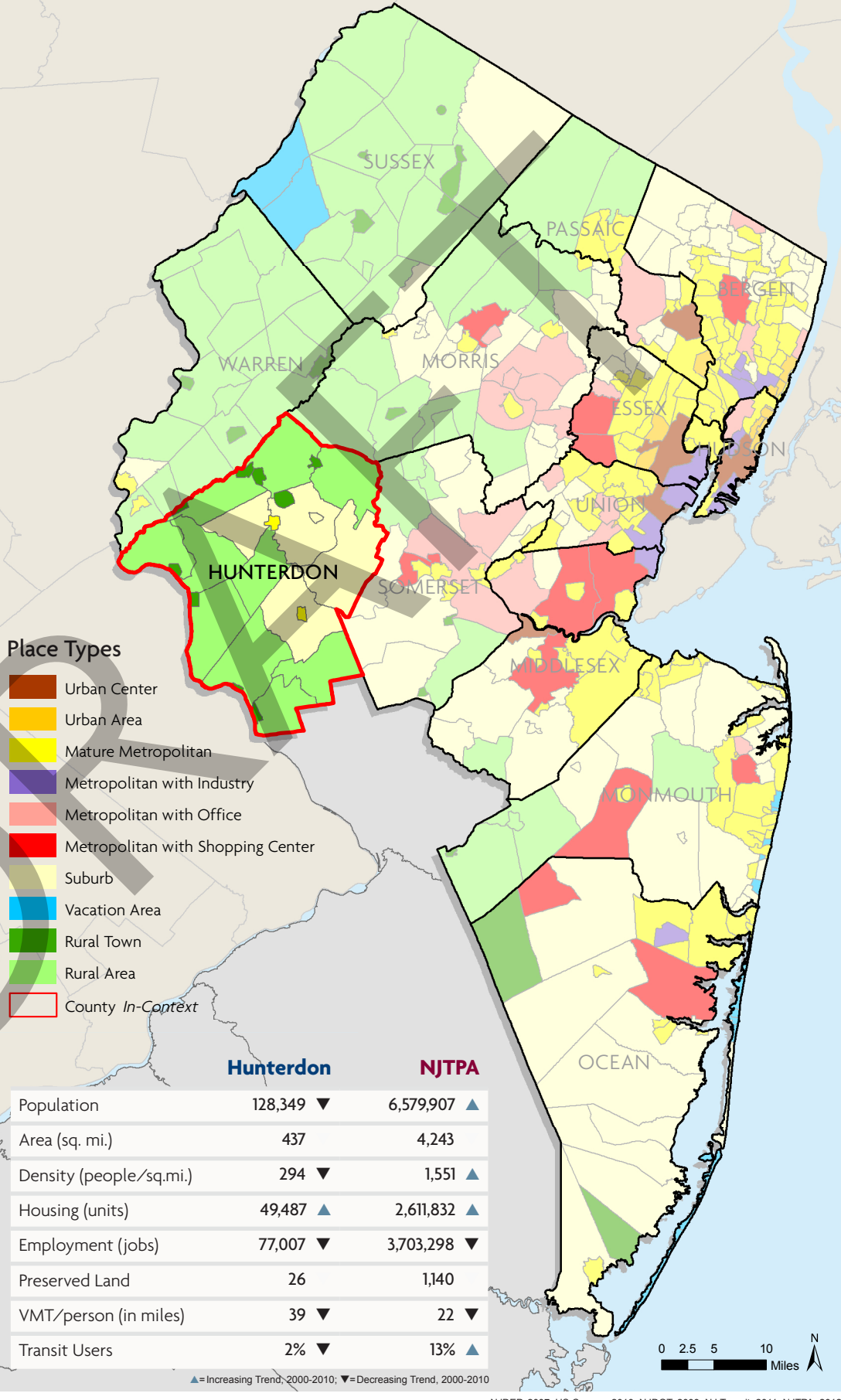
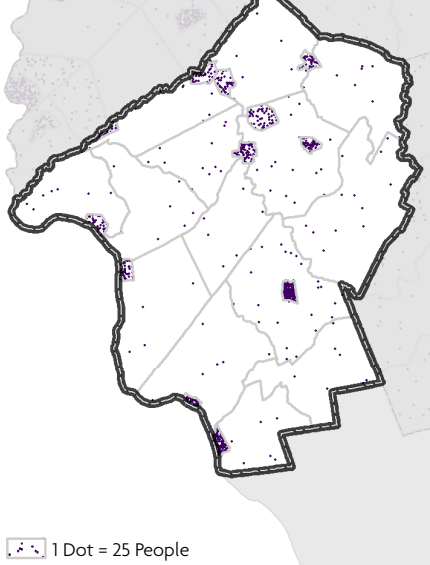


# Hunterdon County: *In Context*

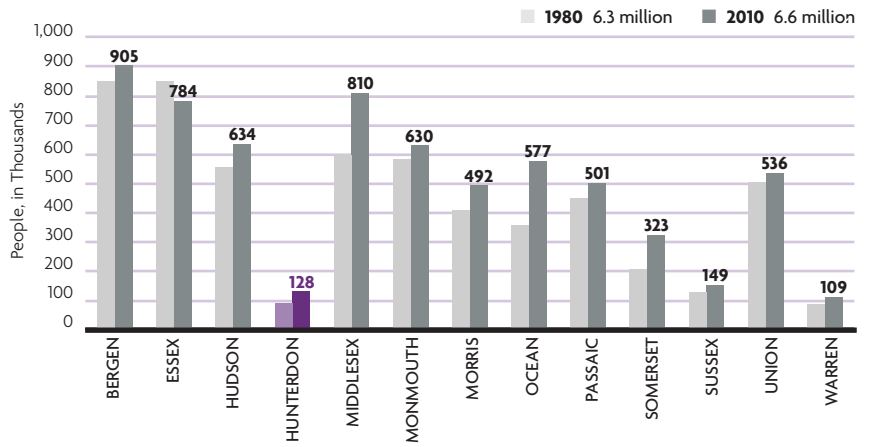


Population Density, 2010



U.S. Census Bureau, 2010

Population, NJTPA Region



Population 65 years and older **13%**  
 People with disabilities **9%**  
 Minority population **12%**  
 Poverty rate **4%**

U.S. Census Bureau, 2010

Total Jobs: 77,007 (2% of the region)

Wage and salary workers 51,260  
 Self-employed workers 25,747

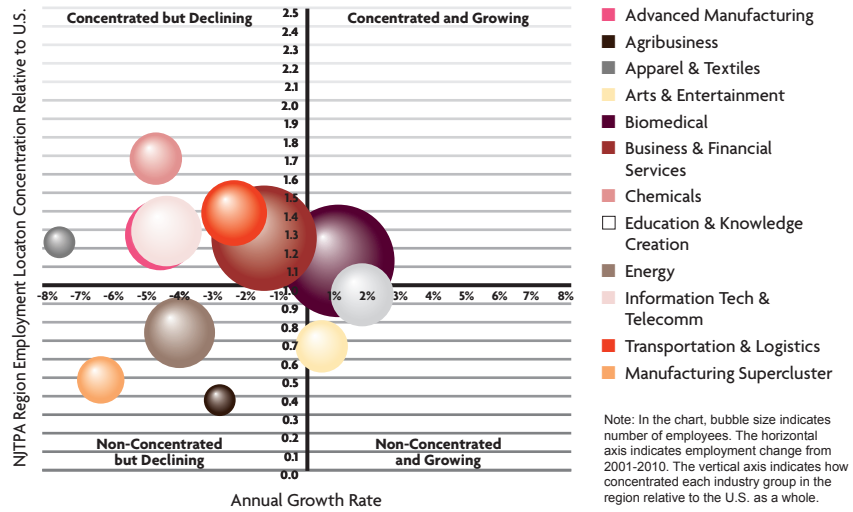
Top Hunterdon Employers

RANK	TOP EMPLOYERS IN 2009	NUMBER EMPLOYEES	TREND
1	Retail trade	9,139	▼
2	Professional, scientific, and technical services	8,887	▼
3	Health care and social assistance	7,496	▲
4	Finance and insurance	5,938	▲
5	Construction	5,347	▼
6	Real estate and rental and leasing	5,168	▼
7	Other services, except public administration	3,617	▼
8	Accommodation and food services	3,500	▼
9	Manufacturing	2,990	▼
10	Arts, entertainment, and recreation	2,811	▼

▲=Increasing Trend, 2008-2009; ▼=Decreasing Trend, 2008-2009

U.S. Bureau of Economic Analysis, 2009

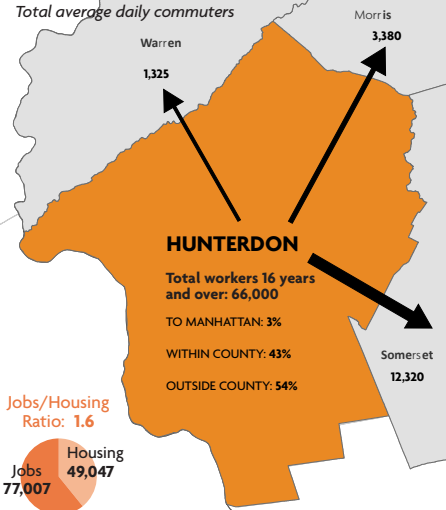
NJTPA Region Key Industry Groups Analysis 2001-2010



U.S. Bureau of Labor Statistics, Quarterly Census of Employment & Wages (QCEW) and Purdue Center for Regional Development (cluster definitions), 2010

Commute to Work

Total average daily commuters

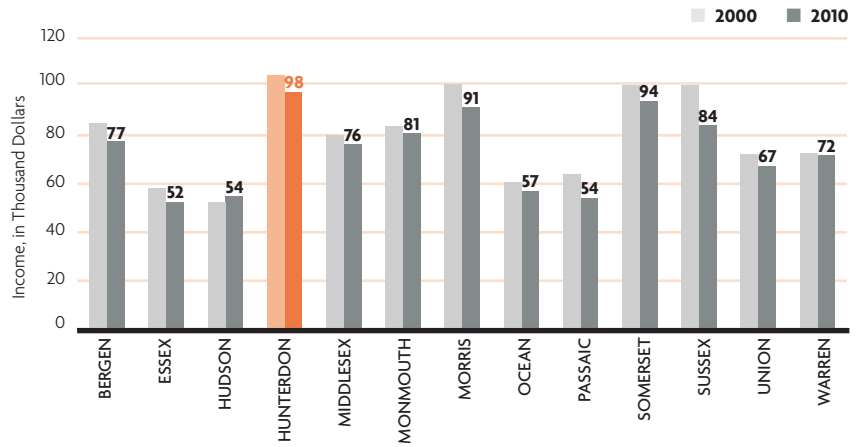


U.S. Census Bureau, 2009;  
 U.S. Bureau of Economic Analysis, 2009

Census Transportation Planning Package, 2006-08

Median Household Income, NJTPA Region

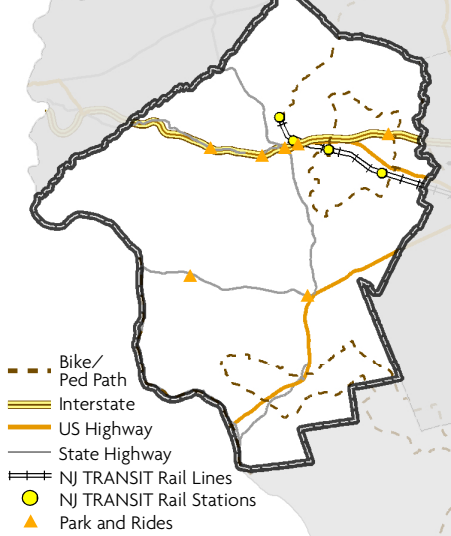
In 2010 inflation-adjusted dollars



U.S. Census Bureau, 2010

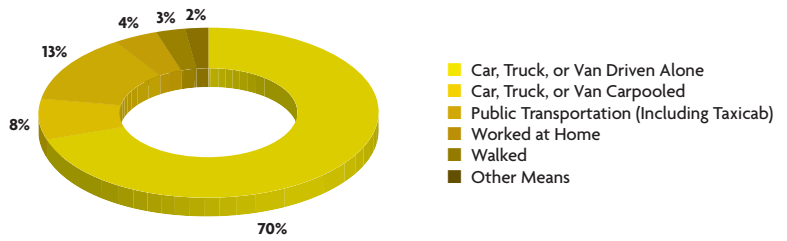
Transportation

Transportation Network



NJDOT, 2009; NJ Transit, 2011

Means of Transportation to Work, NJTPA Region



Average Time to Work

Hunterdon County: **35 minutes** ▲  
 NJTPA: **31 minutes** ▲

U.S. Census Bureau, 2010

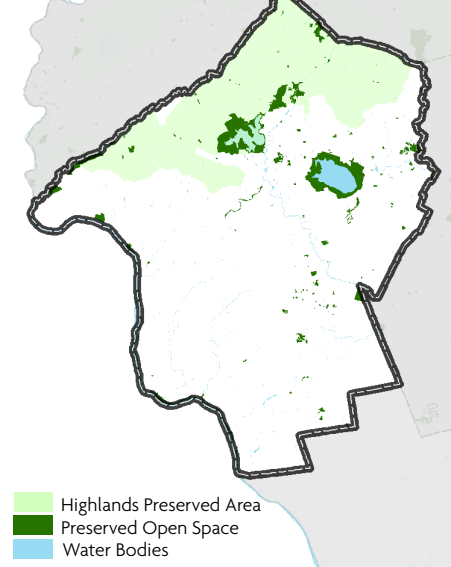
Vehicle Miles Traveled

NJTPA Region			Hunterdon County		
2001	2005	2009	2001	2005	2009
132,927,432 ▲	144,813,766 ▲	144,379,326 ▼	4,496,091 ▲	5,403,153 ▲	4,951,533 ▲

NJDOT, 2009

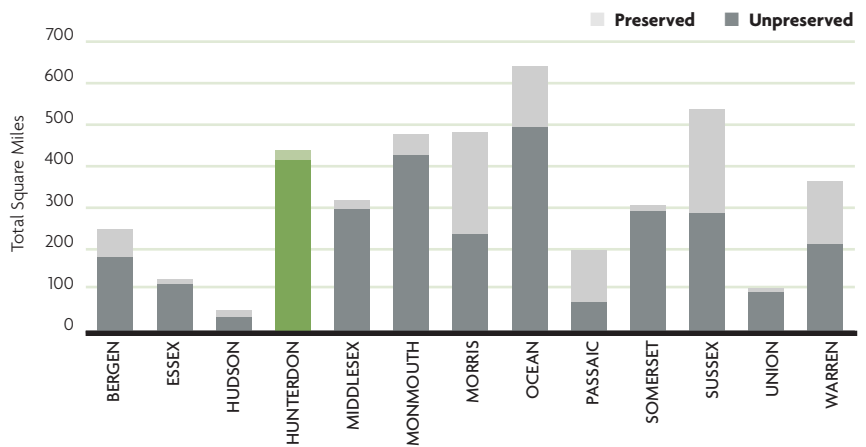
Environment

Environmental Features



NJDEP, Highlands, Meadowlands, & Pinelands, 2007; US Census, 2010

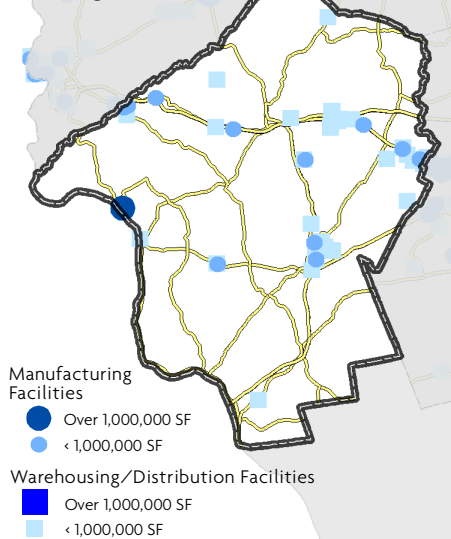
Preserved and Unpreserved Land, NJTPA Region



NJDEP, Highlands, Meadowlands, & Pinelands, 2007; US Census, 2010

Commodities

Industrial Buildings, 2010



CB Richard Ellis, 2011

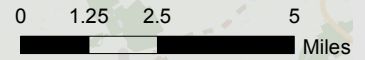
Top 5 Facilities By Inbound/Outbound, Tonnage, 2007

COMPANY NAME	CITY	INBOUND TONS
Meenan Oil Co.	Clinton	454,225
Stem Brothers Propane	Milford	403,589
Instrument Sciences & Tech.	Frenchtown	101,621
Harvard Industries Inc.	Lebanon	65,310
Breen Color Concentrates	Lambertville	44,236

COMPANY NAME	CITY	OUTBOUND TONS
Pinnacle Materials Inc.	Hampton	204,624
Flemington Block & Supply	Flemington	152,692
H K Buzby & Sons Inc.	Lebanon	137,634
Johanna Foods Inc.	Flemington	92,455
Readington Farms Inc.	Whitehouse	91,782

IHS Global Insight Freight Locator Database, 2007

# Hunterdon County



## Land Use

- Developed Land
- Undeveloped & Unpreserved Land

## Environment

- Highlands Protection and Conservation Zones
- Preserved Open Space
- Water Bodies

## Economic

- Major Employers (+50 Employees)

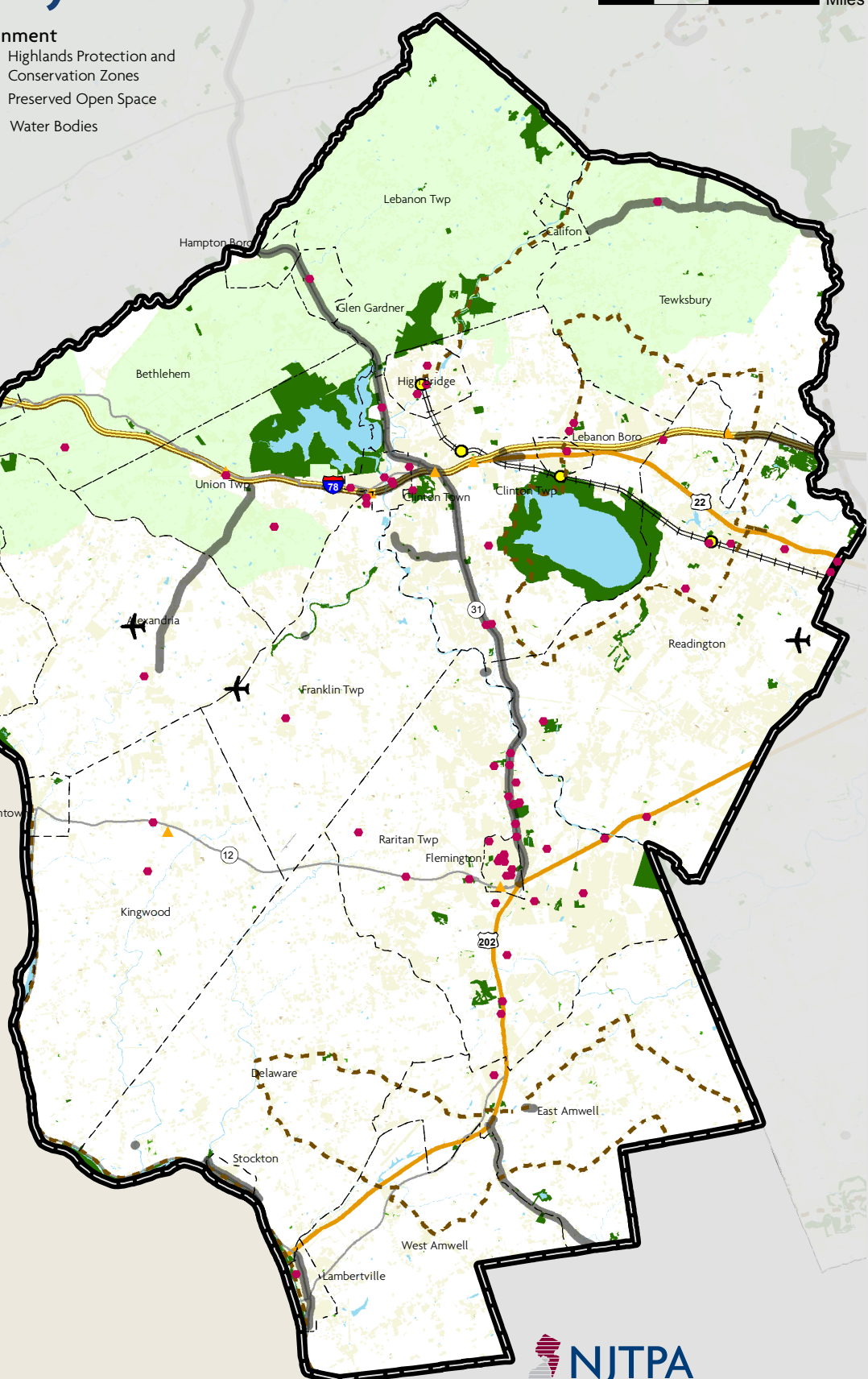
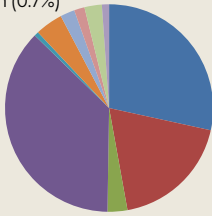
## Transportation

- Bike/Pedestrian Path
- Interstate
- US Highway
- State Highway
- NJ TRANSIT Rail Lines
- NJ TRANSIT Rail Stations
- Park and Rides
- Bus Stops
- Airports

## NJTPA Regional Transportation Investment

Transportation Improvement Projects

- Bridges (28.4%)
- Road Enhancement (18.7%)
- Road Expansion (3.1%)
- Transit Enhancement (37.1%)
- Transit Expansion (0.7%)
- Freight (4.3%)
- ITS (2.2%)
- TDM (1.6%)
- Safety (2.7%)
- Bike/Ped (1.1%)



**NORTH JERSEY TRANSPORTATION PLANNING AUTHORITY**

One Newark Center, 17th Floor  
Newark, NJ 07102  
973-639-8400 | Fax: 973-639-1953

[www.njtpa.org](http://www.njtpa.org)

This publication was prepared by the North Jersey Transportation Planning Authority with funding from the Federal Transit Administration and the Federal Highway Administration. The NJTPA is solely responsible for its contents.