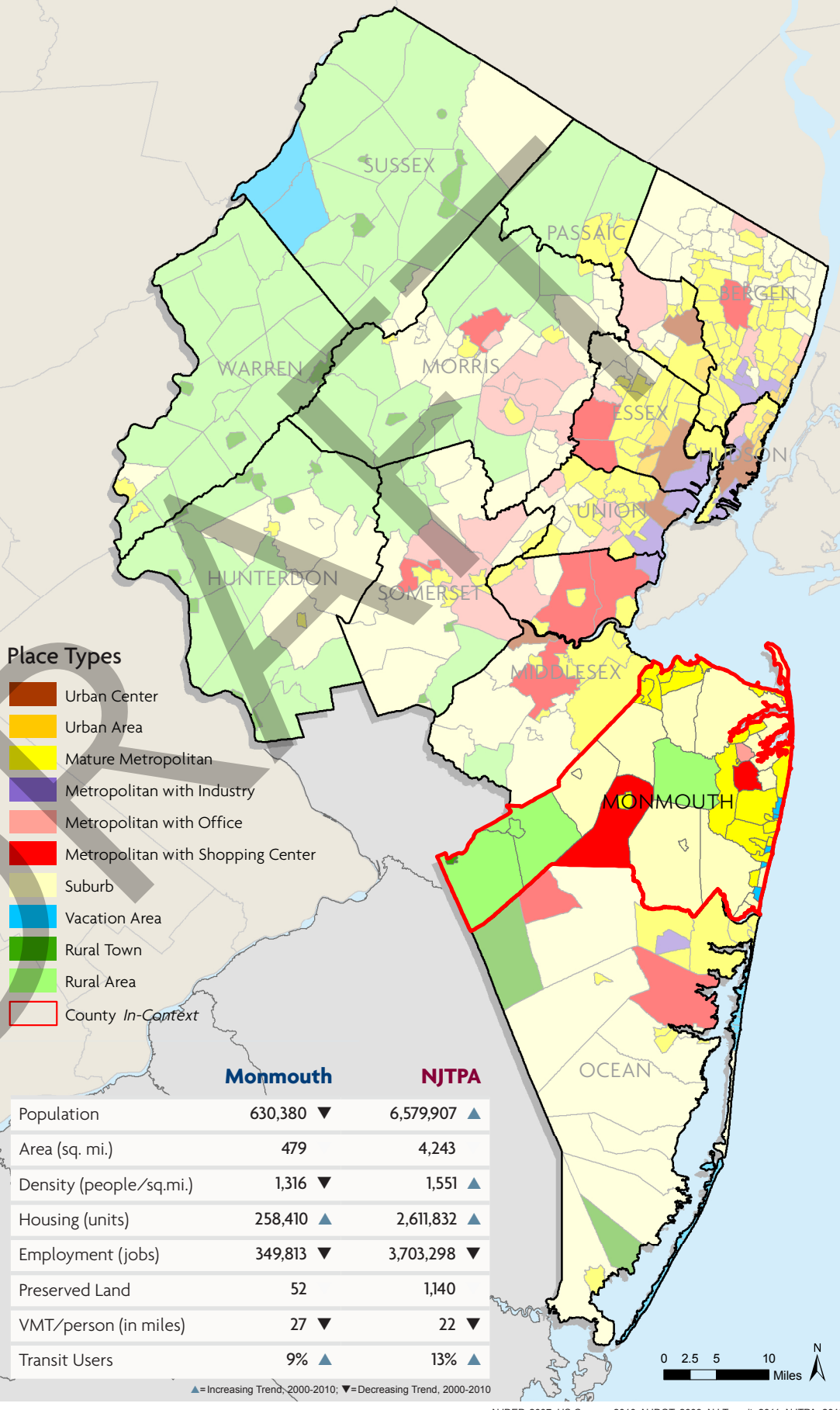
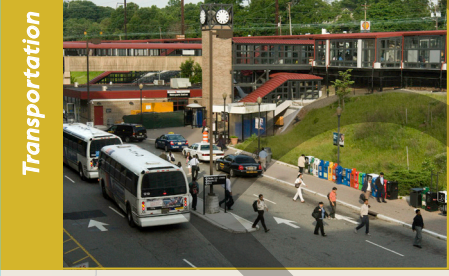


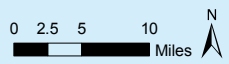
Monmouth County: *In Context*



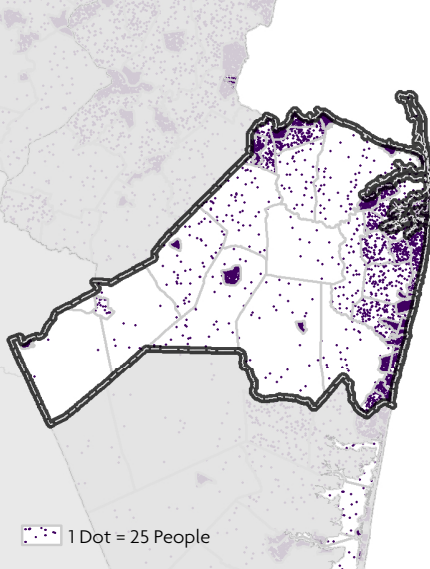
- Place Types**
- Urban Center
 - Urban Area
 - Mature Metropolitan
 - Metropolitan with Industry
 - Metropolitan with Office
 - Metropolitan with Shopping Center
 - Suburb
 - Vacation Area
 - Rural Town
 - Rural Area
 - County *In-Context*

	Monmouth	NJTPA
Population	630,380 ▼	6,579,907 ▲
Area (sq. mi.)	479	4,243
Density (people/sq.mi.)	1,316 ▼	1,551 ▲
Housing (units)	258,410 ▲	2,611,832 ▲
Employment (jobs)	349,813 ▼	3,703,298 ▼
Preserved Land	52	1,140
VMT/person (in miles)	27 ▼	22 ▼
Transit Users	9% ▲	13% ▲

▲=Increasing Trend, 2000-2010; ▼=Decreasing Trend, 2000-2010

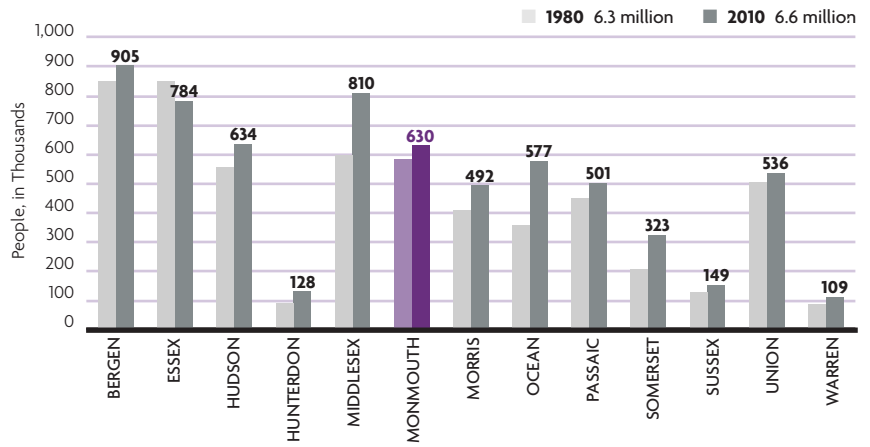


Population Density, 2010



U.S. Census Bureau, 2010

Population, NJTPA Region



Population 65 years and older **14%**
 People with disabilities **8%**
 Minority population **23%**
 Poverty rate **7%**

U.S. Census Bureau, 2010

Total Jobs: 77,007 (2% of the region)

Wage and salary workers 51,260
 Self-employed workers 25,747

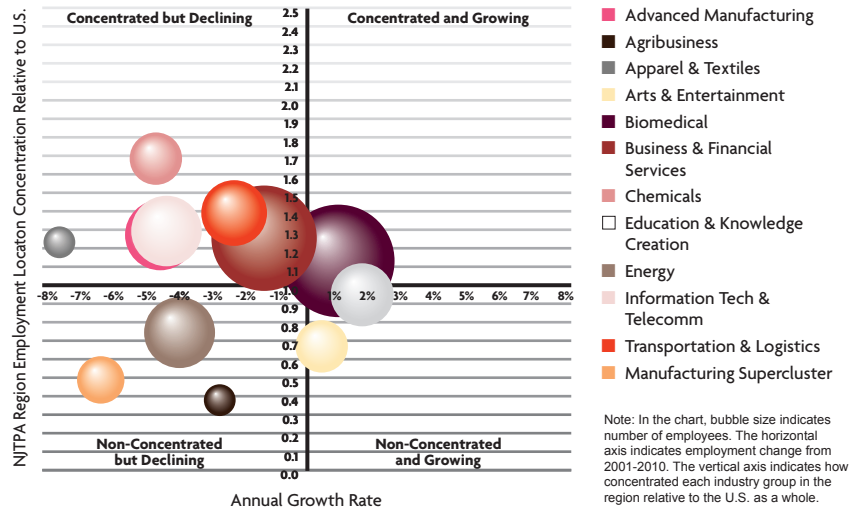
Top Monmouth Employers

RANK	TOP EMPLOYERS IN 2009	NUMBER EMPLOYEES	TREND
1	Health care and social assistance	42,372	▼
2	Retail trade	41,825	▼
3	Professional, scientific, and technical services	33,466	▼
4	Finance and insurance	25,428	▲
5	Accommodation and food services	23,422	▼
6	Real estate and rental and leasing	22,726	▼
7	Other services, except public administration	18,980	▼
8	Construction	18,493	▼
9	Administrative and waste management services	15,010	▼
10	Wholesale trade	11,023	▼

▲=Increasing Trend, 2008-2009; ▼=Decreasing Trend, 2008-2009

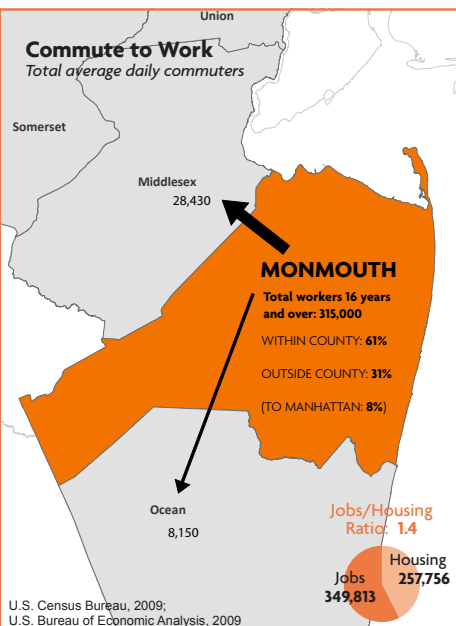
U.S. Bureau of Economic Analysis, 2009

NJTPA Region Key Industry Groups Analysis 2001-2010



U.S. Bureau of Labor Statistics, Quarterly Census of Employment & Wages (QCEW) and Purdue Center for Regional Development (cluster definitions), 2010

Commute to Work
Total average daily commuters

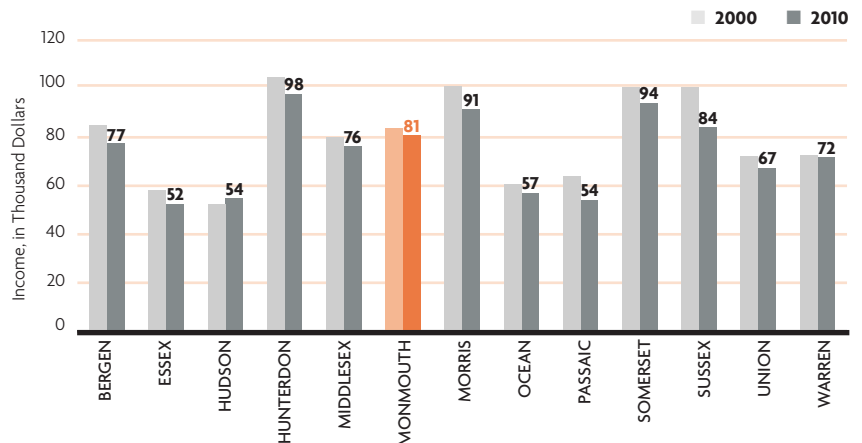


U.S. Census Bureau, 2009; U.S. Bureau of Economic Analysis, 2009

Census Transportation Planning Package, 2006-08

Median Household Income, NJTPA Region

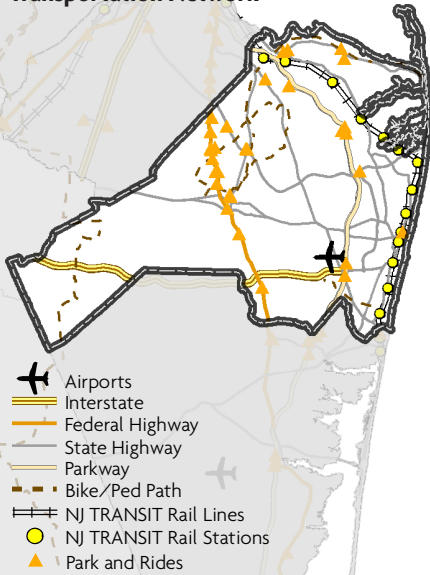
In 2010 inflation-adjusted dollars



U.S. Census Bureau, 2010

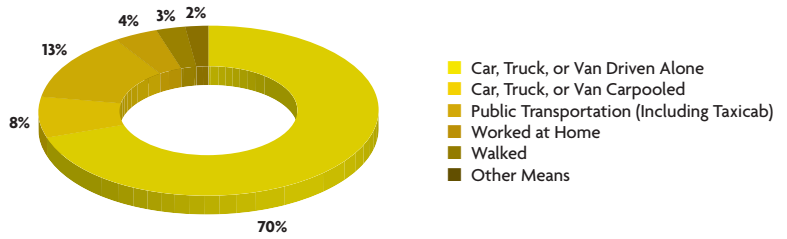
Transportation

Transportation Network



NJDOT, 2009; NJ Transit, 2011

Means of Transportation to Work, NJTPA Region



Average Time to Work
 Monmouth County: 34 minutes ▼
 NJTPA: 31 minutes ▲

U.S. Census Bureau, 2010

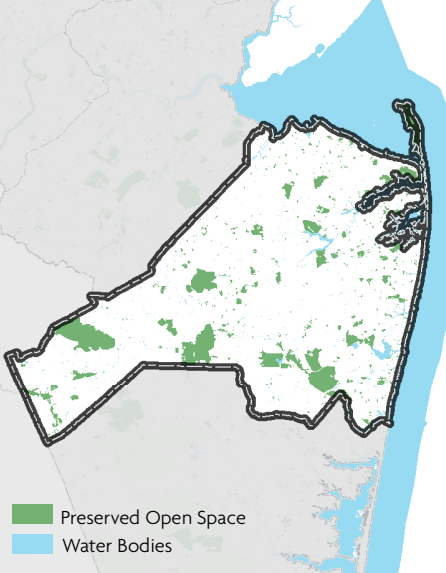
Vehicle Miles Traveled

NJTPA Region			Monmouth County		
2001	2005	2009	2001	2005	2009
132,927,432 ▲	144,813,766 ▲	144,379,326 ▼	15,053,178 ▲	16,838,252 ▲	16,929,818 ▼

NJDOT, 2009

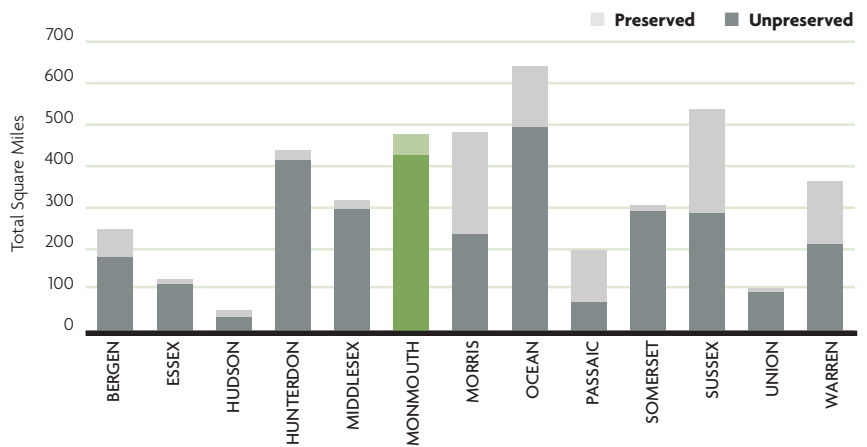
Environment

Environmental Features



NJDEP, Highlands, Meadowlands, & Pinelands, 2007; US Census, 2010

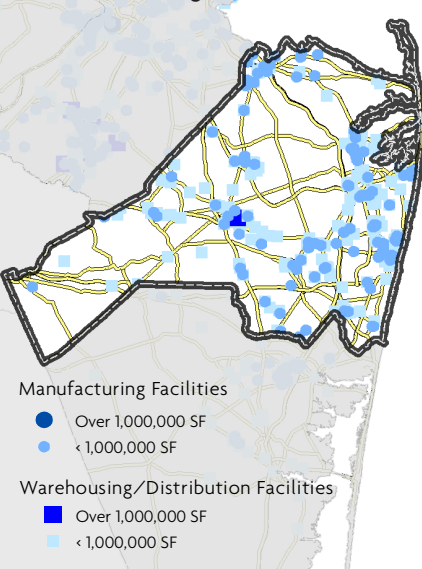
Preserved and Unpreserved Land, NJTPA Region



NJDEP, Highlands, Meadowlands, & Pinelands, 2007; US Census, 2010

Commodities

Industrial Buildings, 2010



CB Richard Ellis, 2011

Top 5 Facilities By Inbound/Outbound, Tonnage, 2007

COMPANY NAME	CITY	INBOUND TONS
Bel-Ray Co Inc	Farmingdale	121,140
Hair Systems Inc	Englishtown	111,534
Cosmetic Essence Inc	Holmdel	75,936
Globe Petroleum Inc	Red Bank	67,041
Coca-Cola Bottling Co	Neptune	65,184

COMPANY NAME	CITY	OUTBOUND TONS
Earl Asphalt Co	Farmingdale	1,303,155
Globe Petroleum Inc	Red Bank	596,041
Stavola Contracting Co Inc	Red Bank	228,052
Hair Systems Inc	Englishtown	227,591
Gourmet Kitchens Inc	Neptune	129,259

IHS Global Insight Freight Locator Database, 2007

Monmouth County



Land Use

- Developed Land
- Undeveloped & Unpreserved Land

Transportation

- Bike/Pedestrian Path
- Interstate
- US Highway
- State Highway
- Parkway
- NJ TRANSIT Rail Lines
- NJ TRANSIT Rail Stations
- Park and Rides
- Bus Stops
- Airports

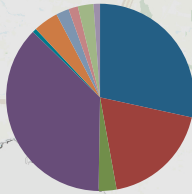
Environment

- Preserved Open Space
- Water Bodies

NJTPA Regional Transportation Investment

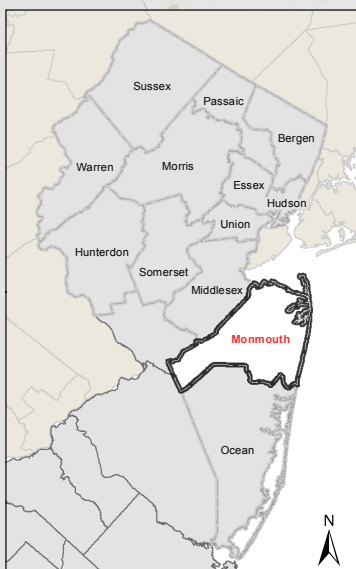
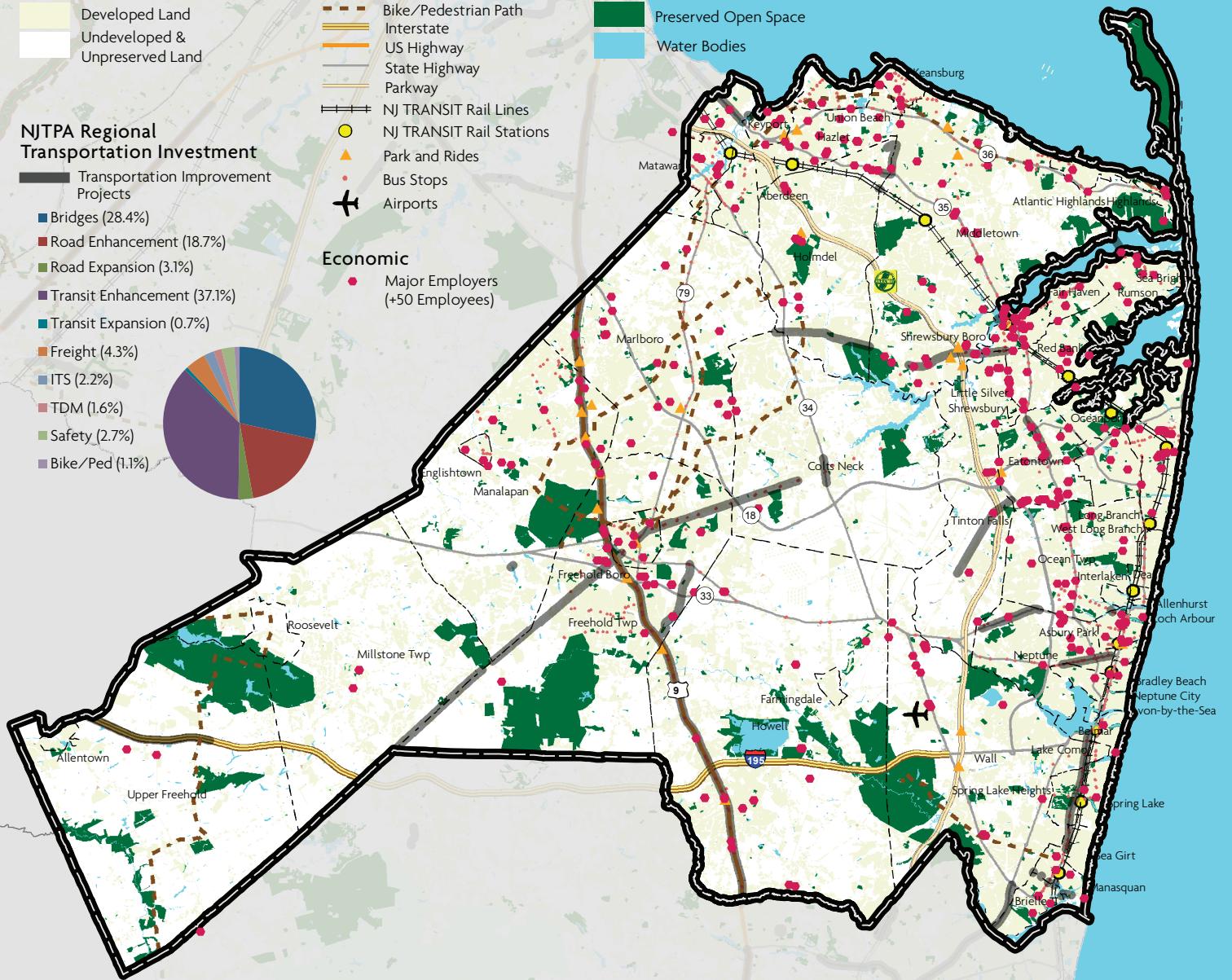
Transportation Improvement Projects

- Bridges (28.4%)
- Road Enhancement (18.7%)
- Road Expansion (3.1%)
- Transit Enhancement (37.1%)
- Transit Expansion (0.7%)
- Freight (4.3%)
- ITS (2.2%)
- TDM (1.6%)
- Safety (2.7%)
- Bike/Ped (1.1%)



Economic

- Major Employers (+50 Employees)



NORTH JERSEY TRANSPORTATION PLANNING AUTHORITY

One Newark Center, 17th Floor
Newark, NJ 07102
973-639-8400 | Fax: 973-639-1953

www.njtpa.org

This publication was prepared by the North Jersey Transportation Planning Authority with funding from the Federal Transit Administration and the Federal Highway Administration. The NJTPA is solely responsible for its contents.