



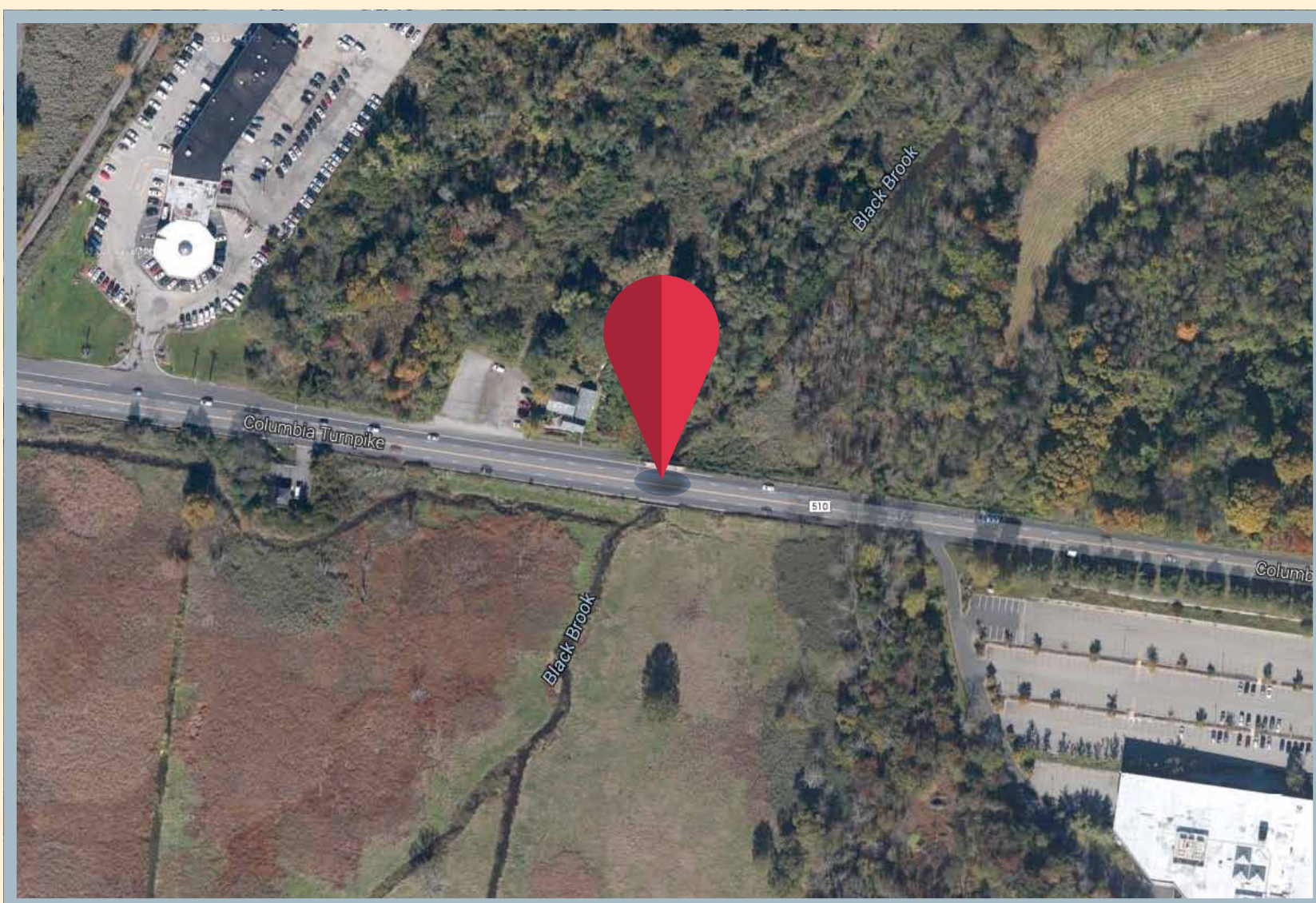
MORRIS COUNTY:

Columbia Turnpike Bridge (1400-451)

FUNDING RECOMMENDATION: \$400,000

LOCATION: Florham Park Borough

ABOUT THE BRIDGE: Morris County Bridge 1400-451 is a 31-foot-long, four-lane crossing over the Black Brook on Columbia Turnpike (County Route 510) in Florham Park. The bridge accommodates approximately 32,000 vehicles per day and serves as an access route for Route 10, Interstate 287 and nearby Morristown Municipal Airport.



MAP DATA © 2015 GOOGLE

Constructed in 1929 and widened in 1960, the structure is classified as functionally obsolete due to substandard width (45.6 feet). Inspections have revealed heavy rusting and cracks in steel and concrete portions of the support structure. Sections of the curbing, sidewalks and guard rails around the bridge have also fallen into disrepair.



PROJECT DESCRIPTION: The project will investigate options for replacing or rehabilitating the bridge.