

# Appendix F

## Crash Data

F.1 Pedestrian Crash Data  
F.2 Bicyclist Crash Data

# Appendix F.1

## Pedestrian Crash Data

PEDESTRIAN RELATED CRASHES ON RIVER ROAD / HUDSON TERRACE (COUNTY ROAD 505) FROM OLD RIVER ROAD (M.P. 3.67) TO BRUCE REYNOLDS BOULEVARD (M.P. 7.46), JANUARY 2007 THROUGH DECEMBER 2011										
CRASH DATE	CROSS STREET	MILEPOST	CRASH TYPE	CRASH TIME	SEVERITY	ENVIRONMENTAL CONDITION	SURFACE CONDITION	LIGHT CONDITION	PEDESTRIAN INJURED	TOTAL INJURED
1/5/2007	Thompson Lane	4.07	Pedestrian	8:34 PM	Injury	Rain	Wet	Dark (Street Lights On/ continuous)	1	1
1/24/2007	Dempsey Ave	5.56	Pedestrian	7:34 PM	Injury	Clear	Dry	Dark (Street Lights On/ continuous)	1	1
6/4/2007	Hilliard Ave	5.49	Pedestrian	11:47 AM	Injury	Rain	Wet	Daylight	1	1
10/3/2007	Garden Pl	5.25	Pedestrian	9:00 AM	Injury	Clear	Dry	Daylight	1	1
10/22/2007	Garden Pl	5.25	Pedestrian	6:36 PM	Injury	Clear	Dry	Dark (Street Lights On/ spot)	1	1
11/22/2007	NJ Route 5	5.70	Pedestrian	4:57 AM	Injury	NULL	Wet	Dark (Street Lights On/ continuous)	1	1
2/1/2008	Archer St	4.76	Pedestrian	8:32 AM	Injury	Rain	Wet	Daylight	1	1
7/30/2008	Thompson Lane	4.50	Pedestrian	1:22 PM	Injury	Clear	Dry	Daylight	1	1
12/10/2008	Gorge Rd	3.84	Pedestrian	8:52 PM	Injury	Rain	Wet	Dark (Street Lights On/ continuous)	1	1
1/5/2009	Sterling Pl	6.42	Pedestrian	8:10 PM	Injury	NULL	NULL	Dark (Street Lights On/ continuous)	1	1
2/7/2009	Dempsey Ave	5.75	Pedestrian	3:05 PM	Injury	Clear	Dry	Daylight	1	1
4/17/2009	Archer St	4.76	Pedestrian	6:46 PM	Injury	Clear	Dry	Daylight	1	1
5/14/2009	NJ Route 5	5.70	Same Direction - Rear End	5:49 PM	Injury	Rain	Wet	Daylight	0	2
12/21/2009	Hilliard Ave	5.49	Right Angle	1:25 PM	Injury	Clear	Dry	Daylight	1	2
1/25/2010	Russell Ave	5.07	Pedestrian	5:01 PM	Property Damage	Rain	Wet	Daylight	0	0
3/15/2010	Edgewater Commons Dwy	4.47	Pedestrian	8:36 PM	Injury	Rain	Wet	Dark (Street Lights On/ spot)	1	1

Source: Transportation Safety Resource Center, Center for Advanced Infrastructure and Transportation, Plan4Safety

# Appendix F.2

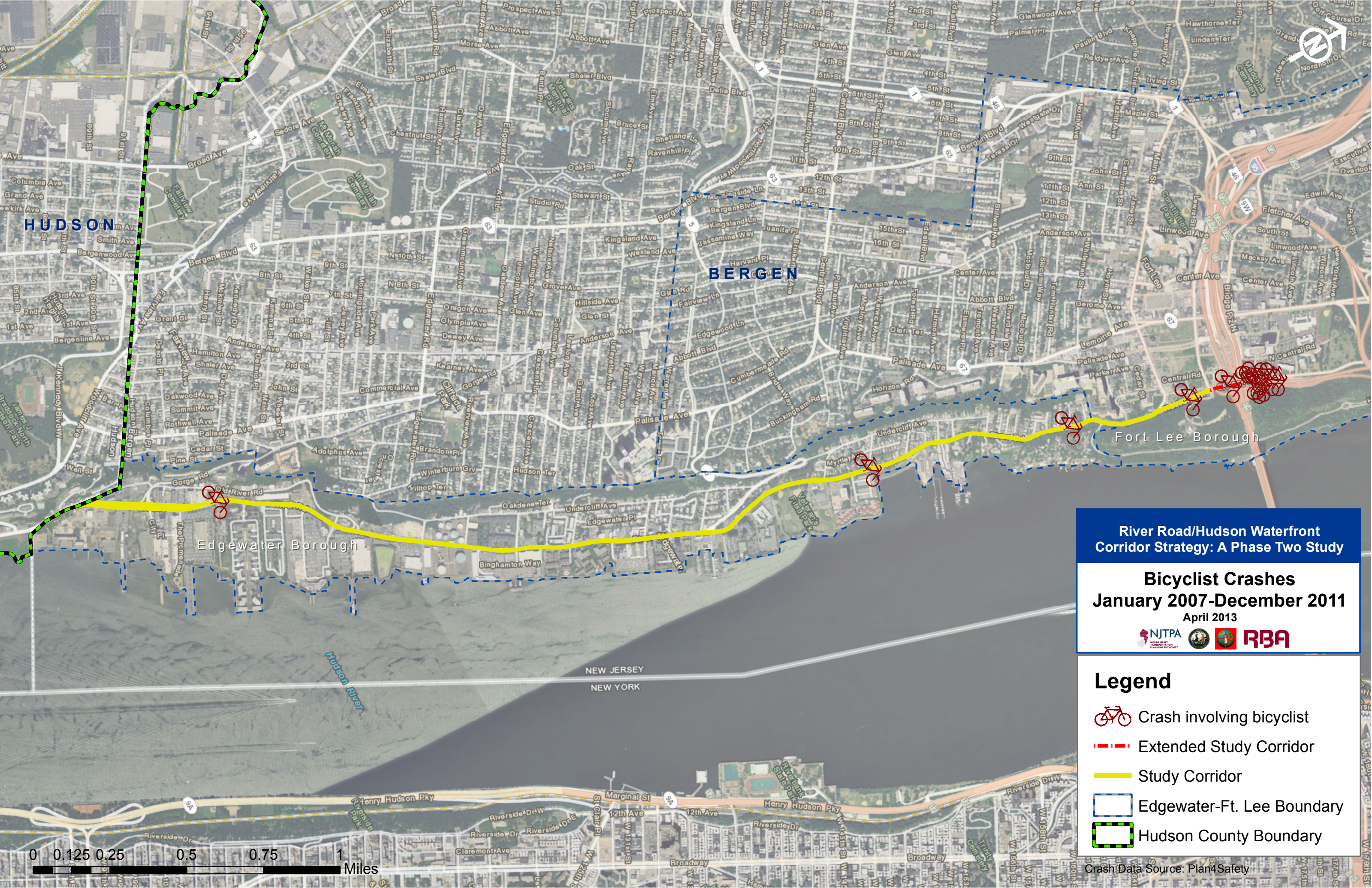
## Bicyclist Crash Data

**Motor Vehicle Crashes Involving a Bicyclist, Along Route 505 (River Road/Hudson Terrace) between Mileposts 3.44 (Edgewater Boundary) and 7.65 (Sylvan Street), 5-yr Period between January 1, 2007 – December 31, 2011**

Crash Date	Crash Location	Cross Street	Milepost	Crash Type	Crash Time	Severity	Intersection	Surface Condition	Light Condition	Pre-Crash Vehicle Action	Pre-Crash Pedalcyclist Action	Contributing Circumstances
5/13/2007	Route 505	Merkle Street	7.61	Pedalcyclist <sup>9</sup>	12:28 PM	Injury	At Intersection	Dry	Daylight	Making Right Turn (not turn on red)	Going Straight Ahead	Pedalcyclist` - Driver Inattention; Motorist - Driver Inattention
6/21/2007	Route 505	Sylvan Street	7.65	Pedalcyclist	6:18 PM	Injury	At Intersection	Wet	Daylight	Making Left Turn	Null	Motorist - Failed to Yield Right of Way to Vehicle/Pedestrian
6/30/2007	Route 505	Merkle Street	7.61	Pedalcyclist	4:14 PM	Injury	At Intersection	Dry	Daylight	Making Left Turn	Going Straight Ahead	Pedalcyclist - Improper Passing;
7/17/2007	Route 505	North Street	6.28	Pedalcyclist	8:17 PM	Injury	Not At Intersection	Dry	Dusk	Making Left Turn	Other Veh/Cyclist Action	Pedalcyclist - Unsafe Speed; Motorist - Driver Inattention
9/30/2007	Route 505	Merkle Street	7.61	Same Direction – Side Swipe	12:22 PM	Injury	Not At Intersection	Dry	Daylight	Going Straight Ahead	Going Straight Ahead	Pedalcyclist 1 – Driver Inattention, Improper Passing; Motorist - Failure To Keep Right
10/14/2007	Route 505	Merkle Street	7.61	Pedalcyclist	4:34 PM	Injury	At Intersection	Dry	Daylight	Making Left Turn	Going Straight Ahead	Pedalcyclist - Improper Passing; Motorist - Other Driver/Pedalcyclist Action; Physical Obstructions (viewing)
6/8/2008	Route 505	Thompson Lane		Pedalcyclist	7:12 PM	Injury	At Intersection	Dry	Daylight	Going Straight Ahead	Going Straight Ahead	Pedalcyclist - None (Driver/Pedcycle); Motorist - Driver Inattention
7/22/2009	Route 505	Unknown	6.24	Pedalcyclist	9:13 AM		Not At Intersection	Dry	Daylight	Passing	Going Straight Ahead	Pedalcyclist - None (Driver/Pedcycle); Motorist - Driver Inattention
11/9/2009	Route 505	115 River Road (Office Center)		Pedalcyclist	10:56 PM	Injury	Not At Intersection	Dry	Dark (Street Lights On/ continuous)	Going Straight Ahead	Null	Pedalcyclist - None (Driver/Pedcycle); Motorist - Driver Inattention
3/20/2010	Route 505	Leary Lane	6.97	Pedalcyclist	6:43 PM	Injury	At Intersection	Dry	Daylight	Stopped in Traffic	Going Straight Ahead	Pedalcyclist - Improper Passing; Motorist - Unknown
4/22/2010	Route 505	Unknown (in Edgewater)		Pedalcyclist	11:55 PM		Not At Intersection	Dry	Dark (Street Lights On/ spot)	Going Straight Ahead	Going Straight Ahead	Pedalcyclist - None (Driver/Pedcycle); Motorist - Driver Inattention
8/28/2010	Route 505	Ramp	7.53	Pedalcyclist	12:02 PM	Injury	At Intersection	Dry	Daylight	Going Straight Ahead	Making Left Turn	Pedalcyclist – Improper Turning; Motorist - None (Driver/Pedcycle)
10/2/2010	Route 505	Central Avenue		Pedalcyclist	2:19 PM	Injury	Not At Intersection	Dry	Daylight	Making Left Turn	Pedestrian Off Road	Pedalcyclist - None (Driver/Pedcycle); Motorist – Improper Turning
6/8/2011	Route 505	Sylvan Street	7.69	Pedalcyclist	12:02 PM	Injury	Not At Intersection	Dry	Daylight	Making Left Turn	Going Straight Ahead	Pedalcyclist - None (Driver/Pedcycle); Motorist - Failed to Yield Right of Way to Vehicle/Pedestrian, Other Driver/Pedalcyclist Action

<sup>9</sup> Pedalcyclist is an alternative word for “bicyclist” and is used on the standard NJ police report as the crash type for any crash involving a bicyclist.





HUDSON

BERGEN

Edgewater Borough

Fort Lee Borough

NEW JERSEY  
NEW YORK






**River Road/Hudson Waterfront  
Corridor Strategy: A Phase Two Study**

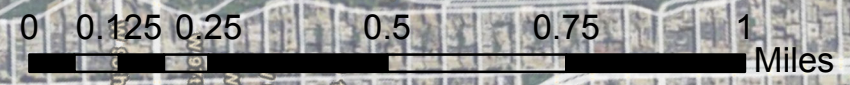
**Bicyclist Crashes  
January 2007-December 2011**

April 2013



**Legend**

-  Crash involving bicyclist
-  Extended Study Corridor
-  Study Corridor
-  Edgewater-Ft. Lee Boundary
-  Hudson County Boundary



Crash Data Source: Plan4Safety