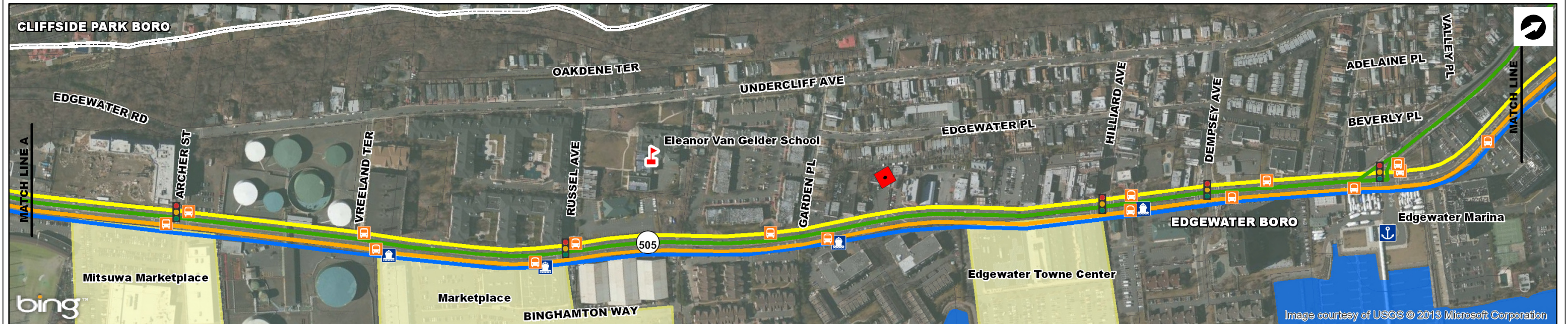
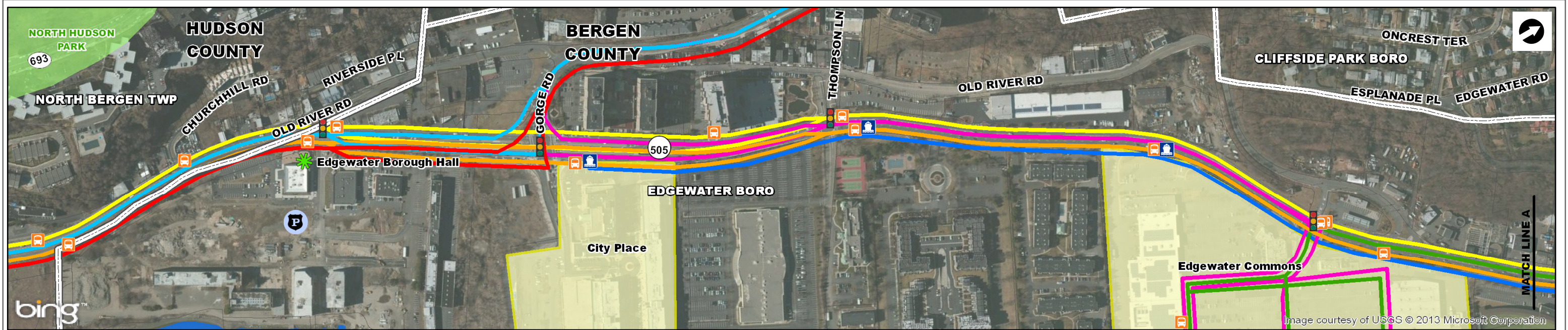


Appendix I

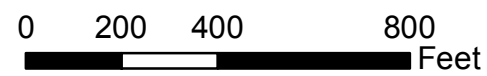
Existing Conditions, Transit Facilities



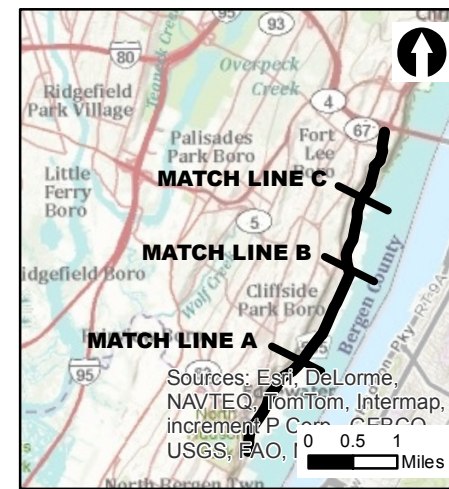
Legend

- | | | | |
|-----------------------|--------------------|---------------------------------|------------------------------|
| Municipality Boundary | Municipal Building | Traffic Signal | NJ Transit Bus Routes |
| County Boundary | Police Station | NJ Transit Bus Stop | 159 |
| Parcel Boundary | Fire Station | Marina and Ferry Terminal | 156 |
| NJDEP Wetland | School | Ferry Shuttle Stop | 158 |
| Park | Shopping Center | NY Waterway Ferry Shuttle Route | 755 |
| | | | 751 |
| | | | 188 |

Sources:
 Base Mapping - Microsoft Corp. 2008, ESRI web server.
 Wetland - NJDEP 2007; Parks - LBG, 2012;
 Hospital and Bergen County Parcels - NJ Office of Information Technology (NJGIT), 2008, 2011;
 Bus/Ferry Stops - LBG and Bergen County, 2012.



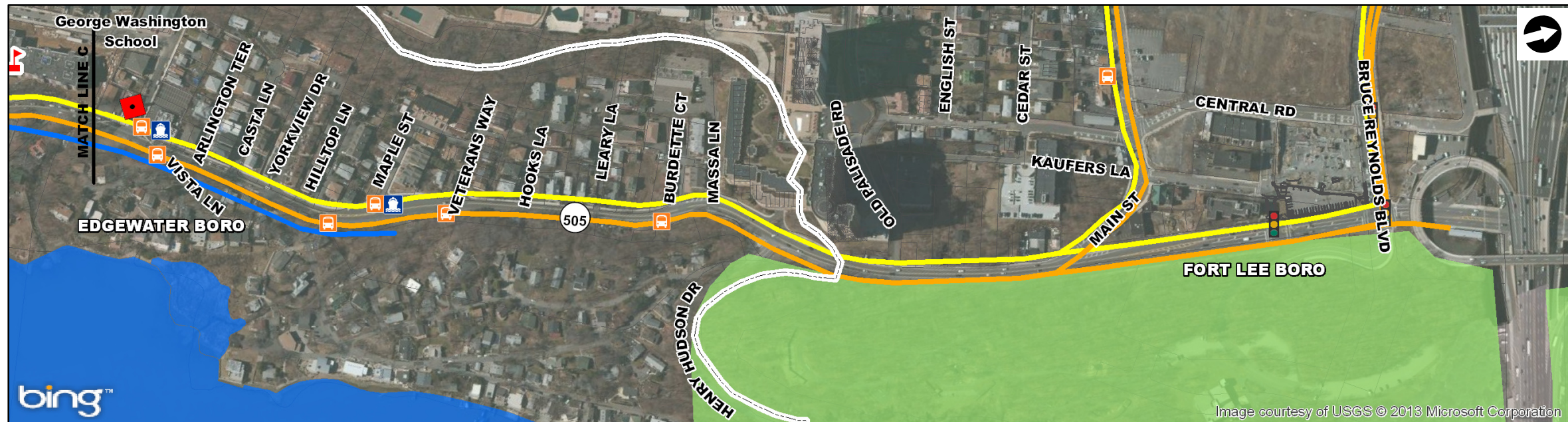
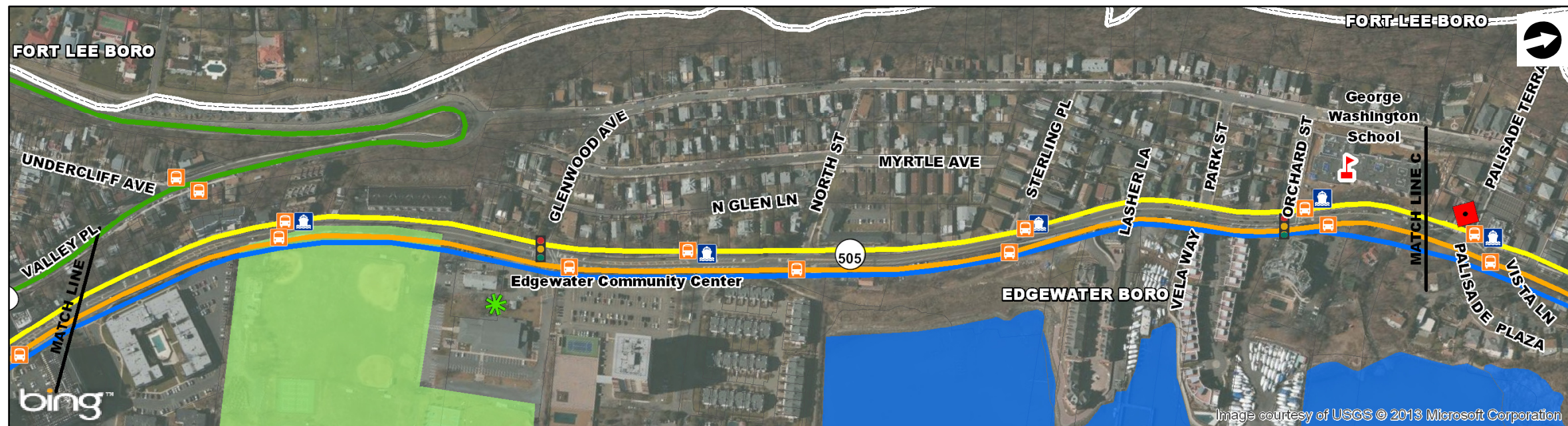
Location of Study Corridor



**River Road/Hudson Waterfront Corridor Strategy:
A Phase Two Study**

**Existing Conditions
Transit Services**
Sheet 1

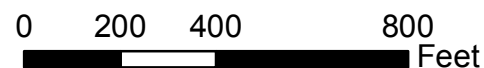
February 2013



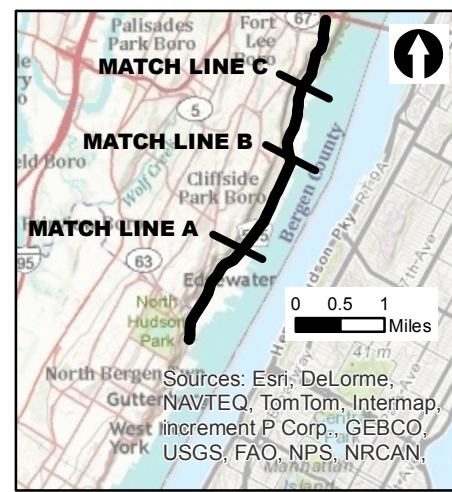
Legend

- | | | | |
|-----------------------|--------------------|---------------------------------|------------------------------|
| Municipality Boundary | Municipal Building | Traffic Signal | NJ Transit Bus Routes |
| County Boundary | Police Station | NJ Transit Bus Stop | 159 |
| Parcel Boundary | Fire Station | Marina and Ferry Terminal | 156 |
| NJDEP Wetland | School | Ferry Shuttle Stop | 158 |
| Park | Shopping Center | NY Waterway Ferry Shuttle Route | 755 |
| | | | 751 |
| | | | 188 |

Sources:
 Base Mapping - Microsoft Corp. 2008, ESRI web server.
 Wetland - NJDEP 2007; Parks - LBG, 2012;
 Hospital and Bergen County Parcels - NJ Office of Information Technology (NJJOIT), 2008, 2011;
 Bus/Ferry Stops - LBG and Bergen County, 2012.



Location of Study Corridor



**River Road/Hudson Waterfront Corridor Strategy:
A Phase Two Study**

**Existing Conditions
Transit Services**
Sheet 2

February 2013