



Truck Stops and Alternative Fuels

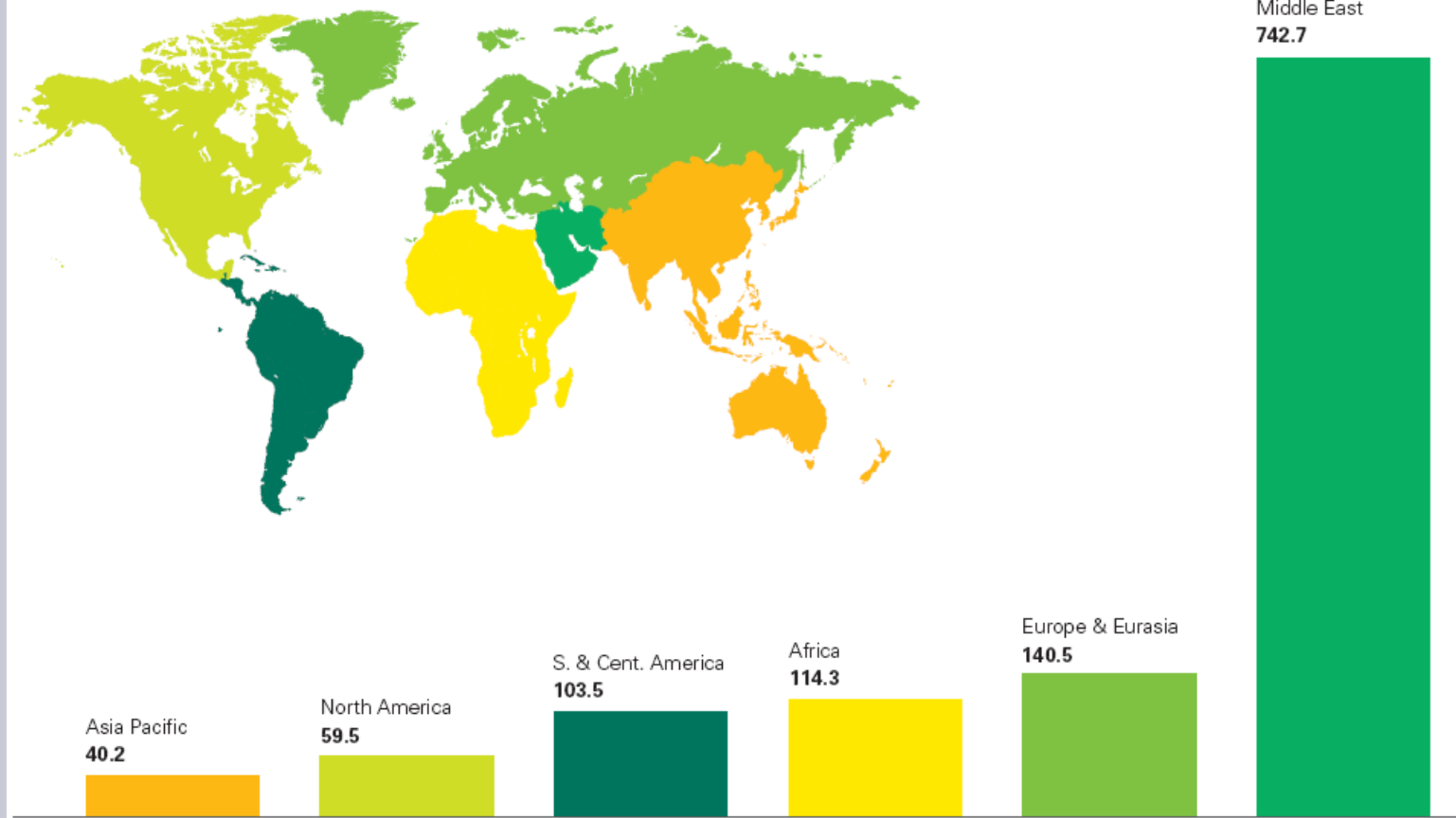
Stakeholders Group Meeting
Art Vatsky, PE
Future Fuels Consulting
September 19, 2006



In Case You Were Wondering . . .



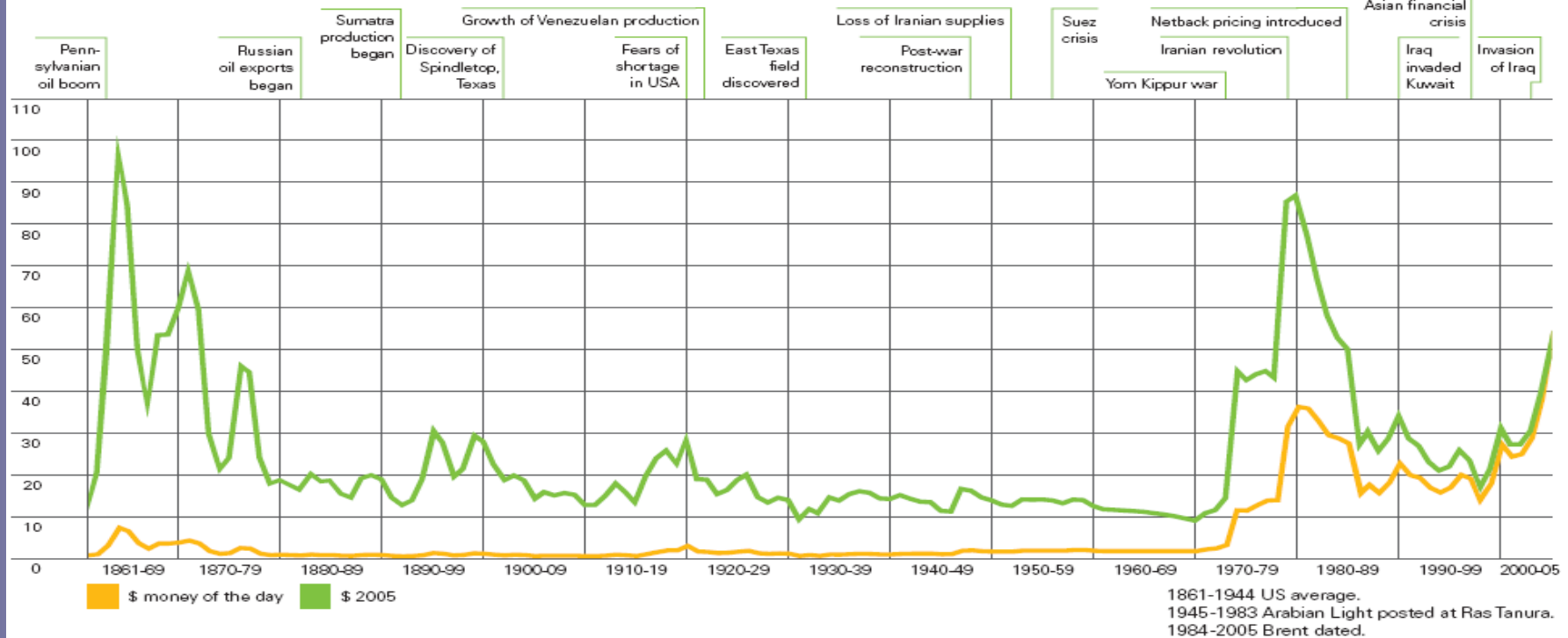
Proved reserves at end 2005
Thousand million barrels



Trends in Petro Fuel Cost



Crude oil prices since 1861
US dollars per barrel
World events



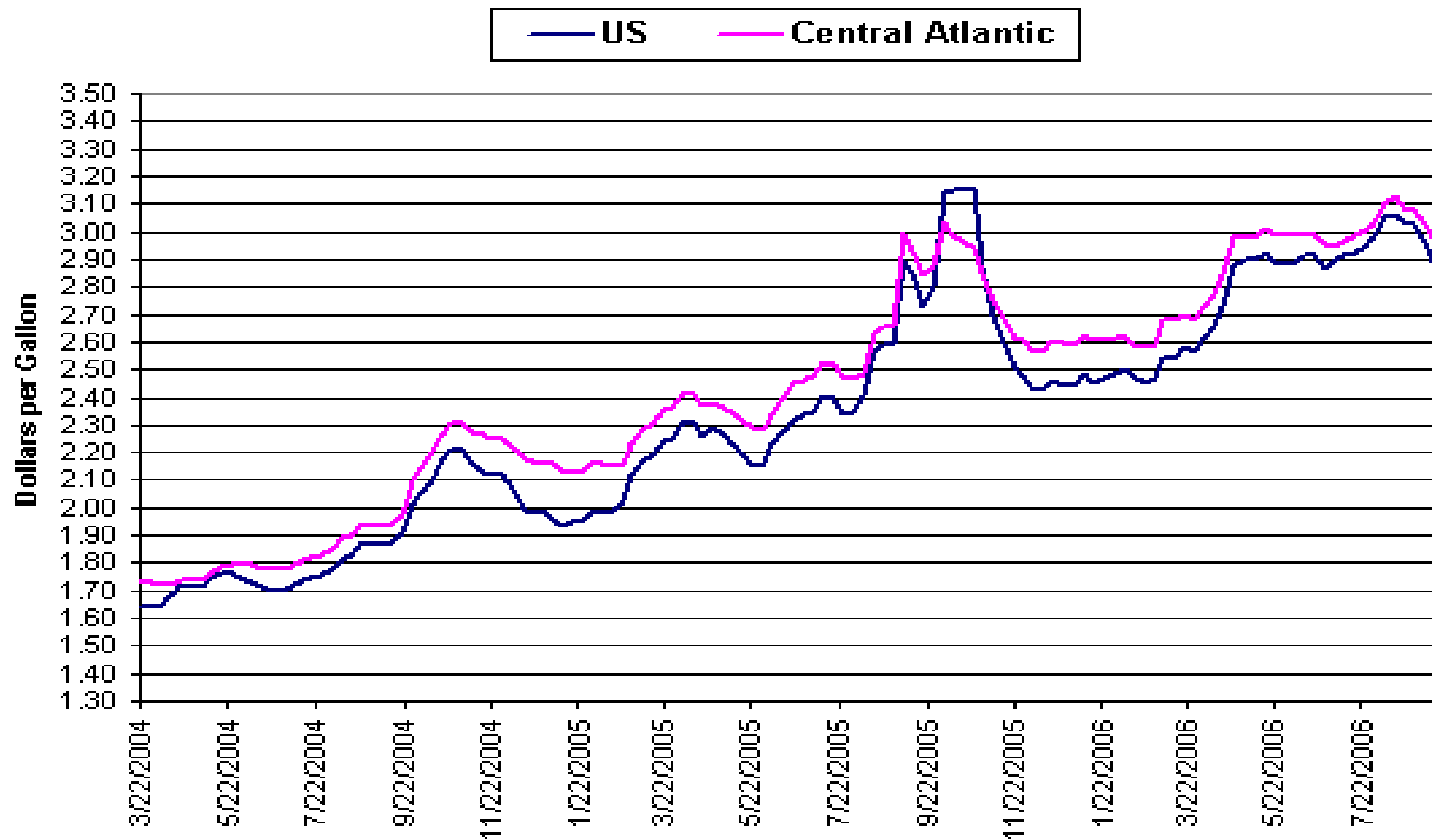
- "With America now importing 60% (85% in in NJ and NY) of the oil we use and a national bill for this habit that came to \$250 billion last year, there is simply no time to waste. With worldwide demand growing rapidly, and with concern about the environmental impact of greenhouse gases rising, the deployment of clean, reliable sources of energy is clearly in our national interest."**

—Secretary of Energy Samuel W. Bodman

Recent Diesel Prices



Weekly Central Atlantic Retail On-Highway Diesel Prices



Source: Energy Information Administration

New Fuels at Expanded or New Trucks Stops



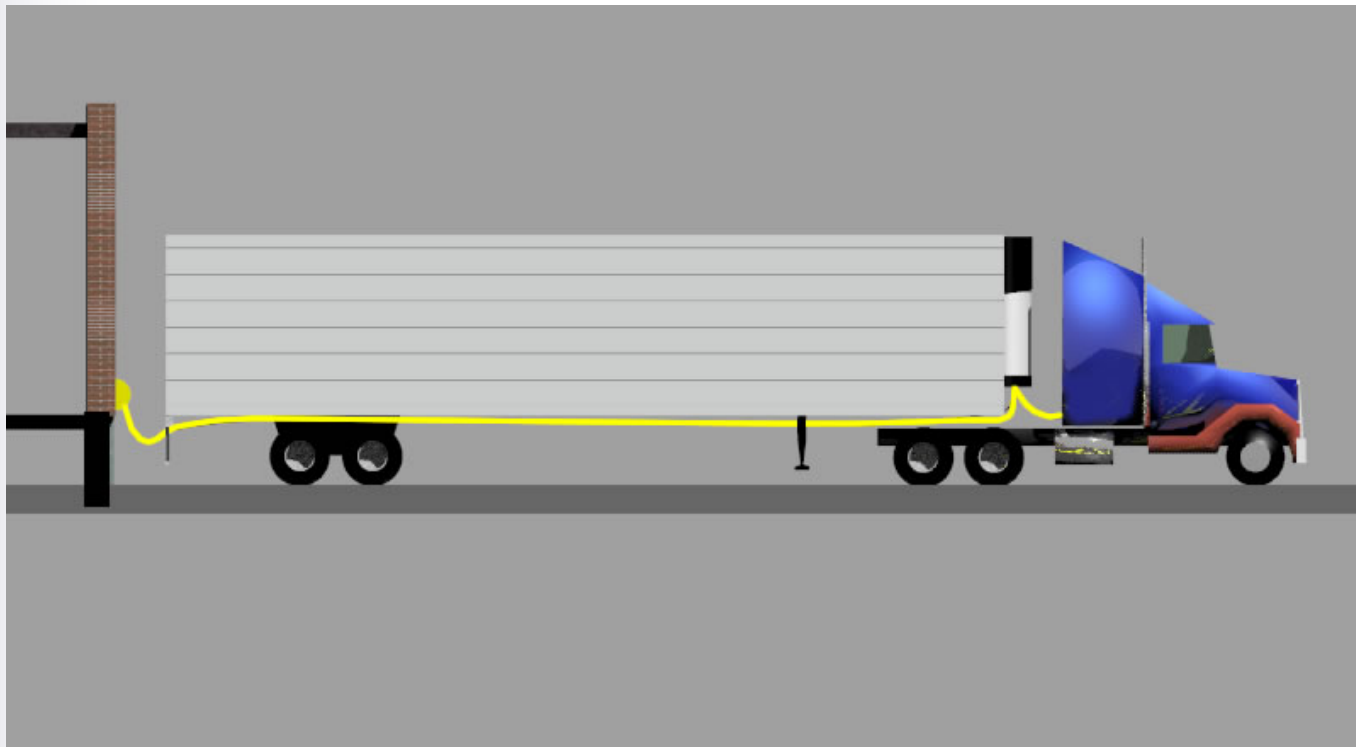
- At the Truck Stop – Electricity for cab comfort and reefer power
- After the Truck Stop – Biofuel blends



When MPH = 0, use electricity!



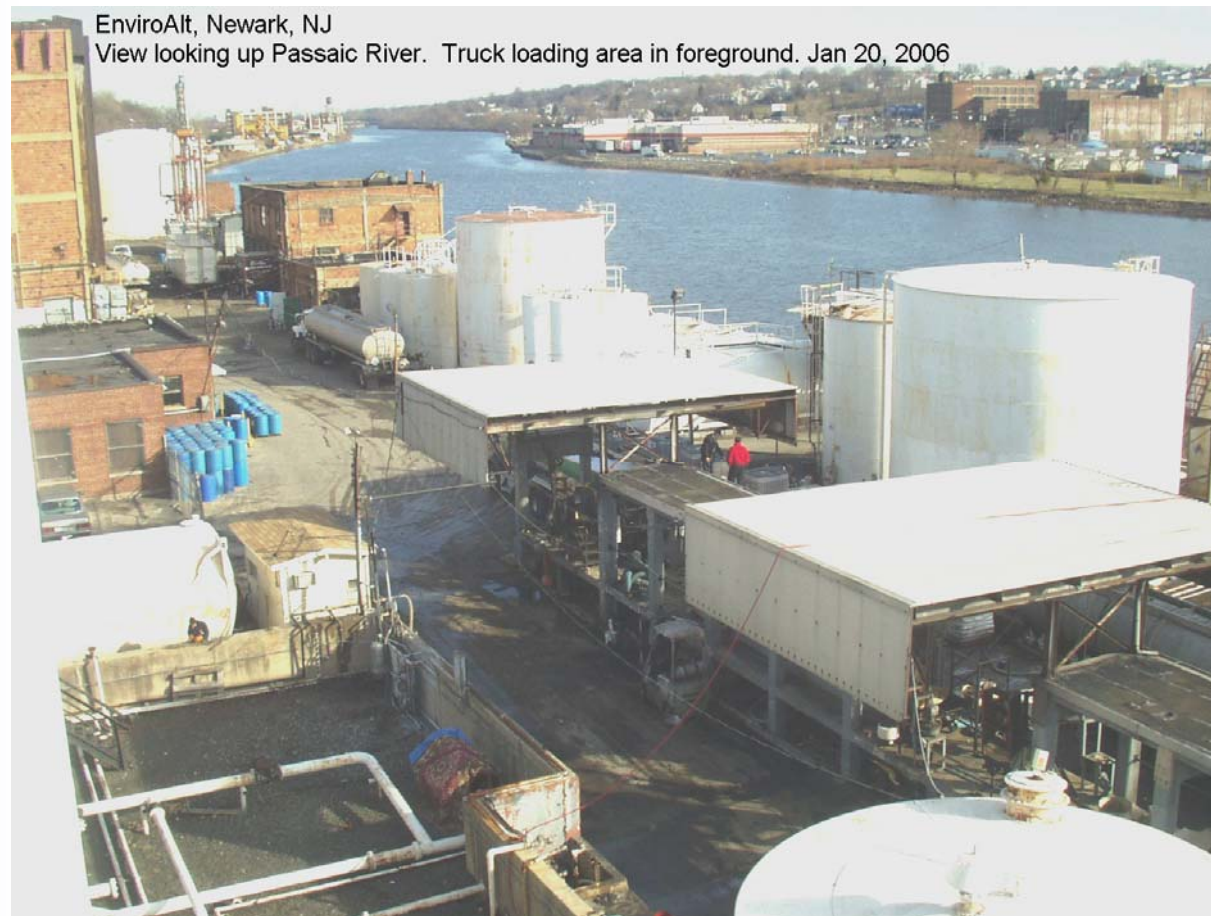
- Pony Packs – small on-board generators
- TSE – Truck stop electrification – from the grid or from a Truck Stop genset (FL)
- eTRU – electric Trailer Refrigeration Units



NJ Biodiesel for NJ Truck Stops



- NJ Biorefineries – Newark and Elizabeth



East Coast Elec/Biodiesel by State



STATE	Electricity	Biodiesel	Total BD
<u>Connecticut</u>	3	1	
<u>Delaware</u>	0	3	
<u>Dist. Of Columbia</u>	0	0	
<u>Maine</u>	0	2	
<u>Maryland</u>	0	4	
<u>Massachusetts</u>	26	6	
<u>New Hampshire</u>	10	10	65
<u>New Jersey</u>	0	1	
<u>New York</u>	0	5	
<u>Pennsylvania</u>	0	11	
<u>Rhode Island</u>	2	0	
<u>Vermont</u>	1	6	
<u>Virginia</u>	0	16	
Florida	2	9	
Georgia	0	18	100
North Carolina	0	38	
South Carolina	1	35	

Existing Biodiesel Stations



A stronger economy.
A healthier environment.



SmartWay Transport Partners **DELIVER.**

. . . a voluntary collaboration between U.S. EPA and the freight industry designed to increase energy efficiency while significantly reducing greenhouse gases and air pollution.

More than 450 Fleets, Freight Shippers, Logistics Companies and Affiliates have joined. NJMTA, ATA, NEMF, Schneider Nat'l, FedEx, ExxonMobil are members.

Making Truck Transportation Work More Cost Effectively in Northern NJ



- Goals: Lowest PetroGals/Ton-Mi & Emissions/Ton-Mi
 - ✓ Use Electricity when MPH = 0
 - ✓ Use blended biofuel when MPH > 0
 - ✓ Optimize travel time (ITS)
 - ✓ Maximize MPH when on the road
 - ✓ Minimize Petroleum Use

The Big Picture: Quote from President Bush



- "Our dependence on foreign energy is like a foreign tax on the American people. . . It's a tax on jobs and it's a tax that is increasing every year."
- —President George W. Bush
- Expanded/New NJ Truck Stops will keep truckers fueled efficiently, cleanly, safely, and profitably.
- Thank you!