

# Virtual Public Information Center

Date: February 2, 2022 from 6:30 PM to 8:00 PM

## WEST SIDE AVENUE SAFETY IMPROVEMENTS PROJECT City of Jersey City, Hudson County, NJ

The City of Jersey City received funds for the West Side Avenue Safety Improvements project through the Local Safety Program which is a federally-funded program established by the North Jersey Transportation Planning Authority (NJTPA), in conjunction with NJDOT, using Federal Highway Administration's Highway Safety Improvements Program funds, with a purpose of advancing safety improvements on county and local roads within its region. Due to the COVID-19 Public Health Emergency, the Public Information Center will be held virtually with a live Q&A session on February 2, 2022 from 6:30 to 8:30 PM. Please visit <https://www.njtpa.org/Get-Involved/Info-Resources/Calendar/2022/February/Public-Meeting.aspx> or scan the barcode below to learn more about the project:



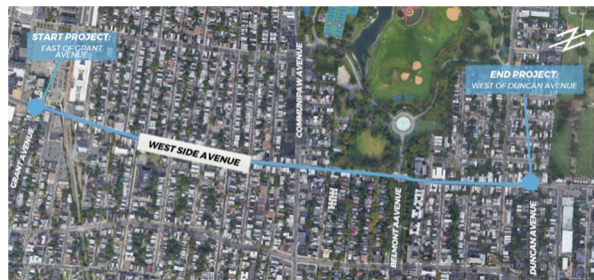
You will have an opportunity to review presentation slides of the relevant items, submit questions, and leave feedback. Property owners with rental units are advised that tenants are also invited and encouraged to participate.

### BACKGROUND

West Side Avenue from Grant Avenue to Duncan Avenue carries an average annual daily traffic from 8,870 to 10,765 vehicles per day and has a posted speed of 25 MPH. The roadway width varies from 36 feet to 40 feet (curb-to-curb) and consists of one lane in each direction with on-street parking. The corridor consists of mixed use residential and commercial properties, including Lincoln Park and the Hudson Bergen Light Rail Station. Parking is restricted in many segments, particularly at loading zones and at the numerous bus stops. NJ Transit

operates two (2) bus lines along the corridor, which provide direct service to/from Journal Square.

Upgrades are required to meet current ADA standards, especially at several intersections where crash data shows higher than average crash rates. In addition, the traffic signal upgrades at various intersections, particularly the pedestrian components, are outdated and in need of upgrades per MUTCD and NJDOT standards.



### PROPOSED IMPROVEMENTS

- Traffic signal upgrades, including vehicle detection cameras and signal backplates
- Curb extensions and bus bulb-outs
- ADA-compliant curb ramps and detectable warning surfaces
- High visibility striping and sign upgrades
- Replacement of deteriorated sidewalks and curbs
- Pedestrian rectangular rapid flashing beacons
- Drainage and green infrastructure improvements
- Milling and resurfacing

### PROJECT SCHEDULE

Start Construction	Spring 2024
Complete Construction	Fall 2024

For further information, please contact:

Jennifer Cato, PE, CME  
City Traffic Engineer  
201-547-4530  
[JCato@jcnj.org](mailto:JCato@jcnj.org)

