

Come learn about proposals to realign the Dover & Rockaway Railroad

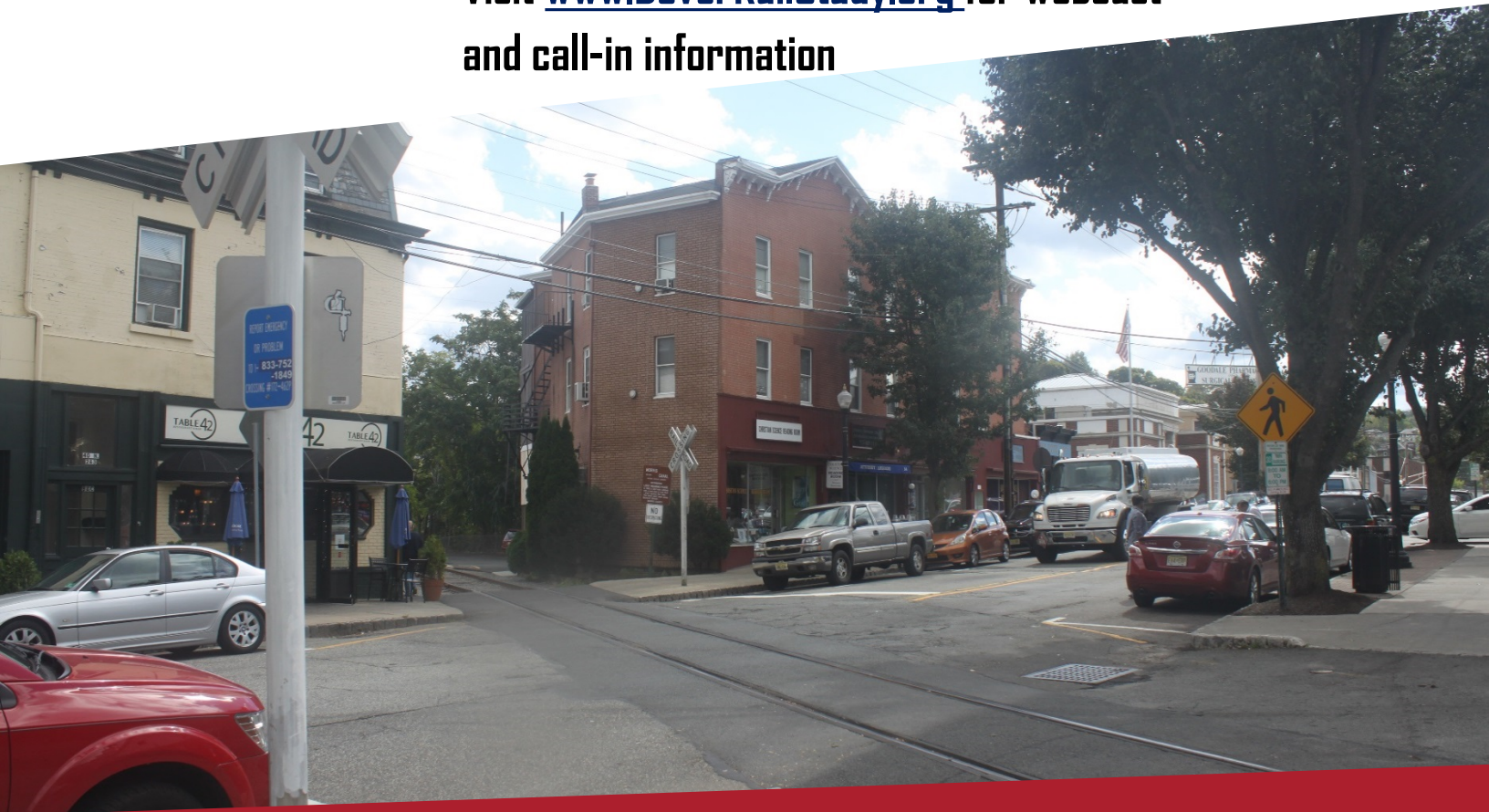
Join us on

Thursday, May 28, 2020



Virtual Meeting: 6:30 - 8:00pm
(Presentation at 6:30pm)

Visit www.DoverRailStudy.org for webcast
and call-in information



This virtual meeting is being held to present the preliminary preferred alternative to eliminate several at-grade crossings on the Dover & Rockaway freight rail line in the Town of Dover, and to receive feedback for the proposed solution. This study is being conducted by the North Jersey Transportation Planning Authority (NJTPA) in partnership with Morris County.

Visit www.DoverRailStudy.org for more information