

PLAN 2035

Appendix E

Abandoned Rail Right of Way Inventory

This document is an appendix to Plan 2035, the Regional Transportation Plan for Northern New Jersey. The full document is available at www.NJTPA.org. Plan 2035 was prepared and published by the North Jersey Transportation Planning Authority, Inc. with funding from the Federal Transit Administration and the Federal Highway Administration. The NJTPA is solely responsible for its contents.

Correspondence or questions relating to this report may be addressed to:

The Executive Director
North Jersey Transportation Planning Authority
One Newark Center, 17th Floor, Newark, NJ 07102-1982
Telephone: 973-639-8400
Fax: 973-639-1953
Web: www.njtpa.org
E-mail: njtpa@njtpa.org

Appendix E: Abandoned Rail Right of Way Inventory

Introduction

Abandoned rail rights-of-way are scattered throughout the landscape of the NJTPA region. To some, these properties may represent a local nuisance, but to transportation planners these properties can be seen as a potentially important resource for future transportation uses. The expansion of highway, transit, freight rail, bicycle, and pedestrian facilities is an action that is often constrained by the availability of suitable rights-of-way. This is especially true in the densely developed NJTPA region.

These abandoned rights-of-way, a majority of which were once used to move freight, present a real opportunity as candidate properties for future transportation uses. In the 1990's, the Legislature authorized the use of bond funds by the Department of Transportation to preserve a number of these former rail lines. Among them the Lackawanna Cutoff, Staten Island Railroad and Rahway Valley Railroad are examples of former rail properties that were acquired and are in various stages of reactivation for the movement of people and/or freight. While currently there are no dedicated funding sources for preserving these properties, they represent a strategic resource to our region that should be protected for future transportation uses and banked if possible.

The NJTPA, with input from the subregions, identified abandoned rail rights-of-way in northern New Jersey. Potential plans for these properties were also identified by the subregions and are shown in the table and map below. The potential plans are provided with the clear understanding that this is a starting point and further analyses would need to be performed with regard to the feasibility of these plans. The NJTPA recommends protecting the identified rail rights-of-way, especially the ones that have potential for future transportation uses.

Potential Plans for Abandoned Rail ROW

Note: Category definitions: U = Unknown, T = Transportation, R = Recreation, C = Combined (T & R)

| Subregion Location | Line ID | Category | Line Name | From | To | Potential Plans | Source |
|---------------------------|----------------|-----------------|---|-------------|--------------|---|------------------|
| Essex County | 1 | U | Caldwell Branch | Essex Fells | Cedar Grove | Unknown | |
| Hudson County | 2 | T | Newark and New York Railroad | Kearny | Kearny | Potential freight rail use | NJTPA |
| Hunterdon County | 3 | R | Pittstown Branch | Pittstown | Landsdown | Capoolong Fish and Wildlife Management Area | Hunterdon County |
| Hunterdon County | 4 | R | High Bridge Branch | High Bridge | Tewksbury | Columbia Trail | Hunterdon County |
| Hunterdon County | 5 | R | Belvidere and Delaware | Frenchtown | Trenton | Delaware & Raritan Canal State Park. | Hunterdon County |
| Hunterdon County | 6 | U | Raritan Valley Line | Bethlehem | Glen Gardner | Unknown | |
| Hunterdon County | 7 | U | Warren Division | Hampton | Lebanon | Unknown | |
| Hunterdon County | 8 | U | South Branch | Readington | Readington | Unknown | |
| Jersey City | 9 | T | Newark and New York Railroad | Jersey City | Jersey City | Proposed HBLR extension. | Jersey City |
| Jersey City | 10 | T | 6th Street Embankment and Bergen Arches | Jersey City | Jersey City | Proposed HBLR extension to Lautenberg Station. | Jersey City |
| Jersey City | 11 | R | 6th Street Embankment | Jersey City | Jersey City | Linear park and East Coast Greenway. | Jersey City |
| Jersey City | 12 | R | Lehigh Valley Railroad | Jersey City | Jersey City | Segments between development projects are to be used for bike/ped greenway. | Jersey City |

| Subregion Location | Line ID | Category | Line Name | From | To | Potential Plans | Source |
|--------------------|---------|----------|---|-----------------|------------------|---|------------------|
| Middlesex County | 13 | T | Services Branch Line (Raritan River Line) | North Brunswick | Milltown | Proposal to retain for future BRT or LRT service to/from New Brunswick | Middlesex County |
| Middlesex County | 14 | R | Perth Amboy Running Track | Metuchen | Woodbridge | Potential Greenway trail County Park. | Middlesex County |
| Middlesex County | 15 | U | Hightstown Industrial | Cranbury | Cranbury | Unknown | |
| Middlesex County | 16 | R | Kingston Branch | South Brunswick | South Brunswick | Potential rail trail. | Middlesex County |
| Monmouth County | 17 | R | Highlands Branch | Matawan | Highlands | Developed as part of the Henry Hudson Trail. | Monmouth County |
| Monmouth County | 18 | R | Freehold Branch | Matawan | Freehold Borough | Developed as part of the Henry Hudson Trail. | Monmouth County |
| Monmouth County | 19 | R | Hightstown Branch | Upper Freehold | Millstone | Under development for use as a public trail. | Monmouth County |
| Monmouth County | 20 | R | Freehold and Jamesburg:Freehold-Jamesburg Trail | Howell | Wall | Gravel trail maintained by Wall Parks & Recreation. | Monmouth County |
| Monmouth County | 21 | R | Freehold and Jamesburg:Edgar Felix Bikeway | Wall | Manasquan | Bituminous trail maintained jointly by Manasquan and Wall park departments. | Monmouth County |
| Monmouth County | 22 | U | Stone Church Branch | Middletown | Highlands | Unknown | |
| Monmouth County | 23 | U | Conrail | Long Branch | Oceanport | Unknown | |
| Monmouth County | 24 | U | Eatontown Branch | Eatontown | Eatontown | Unknown | |

Appendix E: Abandoned Rail Right of Way Inventory

| Subregion Location | Line ID | Category | Line Name | From | To | Potential Plans | Source |
|--------------------|---------|----------|------------------------------|------------------|------------------|---|---------------|
| Morris County | 25 | R | High Bridge Branch | Washington | Washington | Converted to a recreational trail (Columbia Trail). | Morris County |
| Morris County | 26 | R | Chester Branch | Washington | Chester | ROW either no longer exists or preserved for recreational trails. | Morris County |
| Morris County | 27 | U | Wharton and Northern | Rockaway | Rockaway | Unknown | |
| Newark | 28 | T | Newark and New York Railroad | Newark | Newark | Potential freight rail use. | NJTPA |
| Ocean County | 29 | T | Lakehurst Naval Air Station | Jackson | Manchester | Retained by navy Lakehurst for future mission needs. | Ocean County |
| Ocean County | 30 | T | Toms River Branch | Lakehurst | Toms River | Potential MOM connector. | Ocean County |
| Ocean County | 31 | R | Toms River and Barnegat | Toms River | South Toms River | Walk and bike connection to Toms River and County Barnegat Branch bike trail. | Ocean County |
| Ocean County | 32 | R | Toms River and Barnegat | South Toms River | Beachwood | A "share the road" bike route is planned along Flint Road. | Ocean County |
| Ocean County | 33 | R | Toms River and Barnegat | Beachwood | Berkeley | Bike path will become part of the County Barnegat Branch Trail. | Ocean County |
| Ocean County | 34 | R | Toms River and Barnegat | Berkeley | Lacey | Part of County Barnegat Branch Trail. | Ocean County |

Appendix E: Abandoned Rail Right of Way Inventory

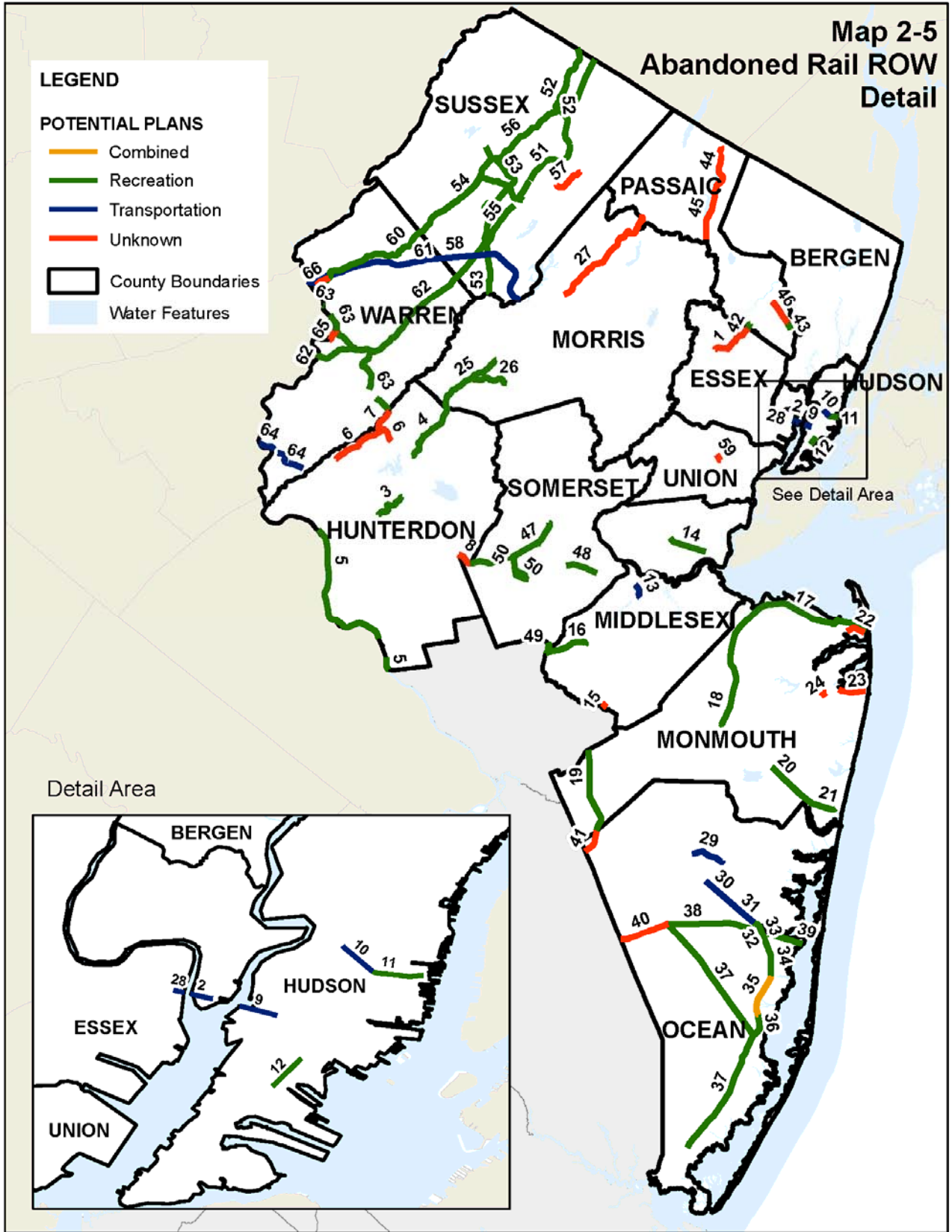
| Subregion Location | Line ID | Category | Line Name | From | To | Potential Plans | Source |
|--------------------|---------|----------|-------------------------------------|--------------|------------------|---|-----------------|
| Ocean County | 35 | C | Toms River and Barnegat | Lacey | Lacey | Currently planned as a road / parallel trail project. | Ocean County |
| Ocean County | 36 | R | Toms River and Barnegat | Lacey | Barnegat | Part of County Barnegat Branch Trail. | Ocean County |
| Ocean County | 37 | R | Tuckerton Railroad | Manchester | Tuckerton | Proposal to use as a recreational trail through the Pinelands. | Ocean County |
| Ocean County | 38 | R | Philadelphia and Long Branch | Manchester | South Toms River | May become the northern leg of a large "triangle" of three connected trails. | Ocean County |
| Ocean County | 39 | R | Philadelphia and Long Branch | Pine Beach | Berkeley | Bike trail in Pine Beach. Recreation uses in Ocean Gate and Berkeley. | Ocean County |
| Ocean County | 40 | U | Philadelphia and Long Branch | Manchester | Manchester | Unknown | |
| Ocean County | 41 | U | Hightstown Branch | Plumsted | Plumsted | Unknown | |
| Passaic County | 42 | R | Caldwell Branch | Little Falls | Little Falls | Used as a walking trail. | Passaic County |
| Passaic County | 43 | R | Patterson and Hudson River Railroad | Passaic | Passaic | City Park | Passaic County |
| Passaic County | 44 | U | Ringwood Branch | Ringwood | Ringwood | Unknown | |
| Passaic County | 45 | U | Lake Railway | Ringwood | Pompton Lakes | Unknown | |
| Passaic County | 46 | U | Patterson and Hudson River Railroad | Patterson | Clifton | Unknown | |
| Somerset County | 47 | R | South Branch | Somerville | Branchburg | Potential Greenway connection to Sourland Mountain Park/Multi-modal corridor. | Somerset County |

Appendix E: Abandoned Rail Right of Way Inventory

| Subregion Location | Line ID | Category | Line Name | From | To | Potential Plans | Source |
|--------------------|---------|----------|---------------------------------|--------------------------|--------------------------|--|-----------------|
| Somerset County | 48 | R | Millstone Branch | Franklin | Franklin | Potential Greenway Corridor. | Somerset County |
| Somerset County | 49 | R | Kingston Branch | Franklin | Franklin | Potential Greenway Corridor. | Somerset County |
| Somerset County | 50 | R | GSA Belle Mead Depot | Hillsborough GSA Depot | Hillsborough GSA Depot | Potential Greenway connection to Sourland Mountain Park. | Somerset County |
| Sussex County | 51 | R | Sussex Railroad | Lafayette | Hardyston | Potential future recreational trail. | Sussex County |
| Sussex County | 52 | R | Unionville Branch | Hamburg | Wantage | Potential future recreational trail. | Sussex County |
| Sussex County | 53 | R | Sussex Branch | Branchville | Byram | Existing NJDEP trail. | Sussex County |
| Sussex County | 54 | R | Former Mainline | Lafayette/Sparta Border | Stillwater/Fredon Border | Used by the Paulinskill Nature Trail. | Sussex County |
| Sussex County | 55 | R | Lehigh and Hudson River Railway | Lafayette/Andover Border | Green | Potential future recreational trail. | Sussex County |
| Sussex County | 56 | R | Lehigh and New England Railroad | Hampton | Vernon | Potential future recreational trail. | Sussex County |
| Sussex County | 57 | U | Ogdensburg Branch | Hardyston | Ogdensburg | Unknown | |
| Sussex County | 58 | T | Lackawanna Cutoff | Green | Hopatcong | Resurrection of passenger rail service. | NJTPA |
| Union County | 59 | U | Lehigh Valley Connector | Kenilworth | Roselle Park | Unknown | |
| Warren County | 60 | R | Former Mainline | Knowlton | Frelinghuysen | Used by the Paulinskill Nature Trail. | Warren County |
| Warren County | 61 | T | Lackawanna Cutoff | Knowlton | Frelinghuysen | Proposal to resurrect passenger rail service on this line. | Warren County |
| Warren County | 62 | R | Lehigh and Hudson River Railway | Allamuchy | White | Proposal to convert this to a useable nature trail. | Warren County |

Appendix E: Abandoned Rail Right of Way Inventory

| Subregion Location | Line ID | Category | Line Name | From | To | Potential Plans | Source |
|---------------------------|----------------|-----------------|-----------------------------|--------------|------------|--|---------------|
| Warren County | 63 | R | Warren Division | Knowlton | Washington | Proposal to convert this section to a nature trail. | Warren County |
| Warren County | 64 | T | Raritan Valley Line | Phillipsburg | Greenwich | Proposal to utilize this for passenger rail service. | Warren County |
| Warren County | 65 | U | Pennsylvania Railroad | White | White | Unknown | |
| Warren County | 66 | U | Main Line and Sussex Branch | Knowlton | Knowlton | Unknown | |



Appendix E: Abandoned Rail Right of Way Inventory