



CITY OF NEWARK:

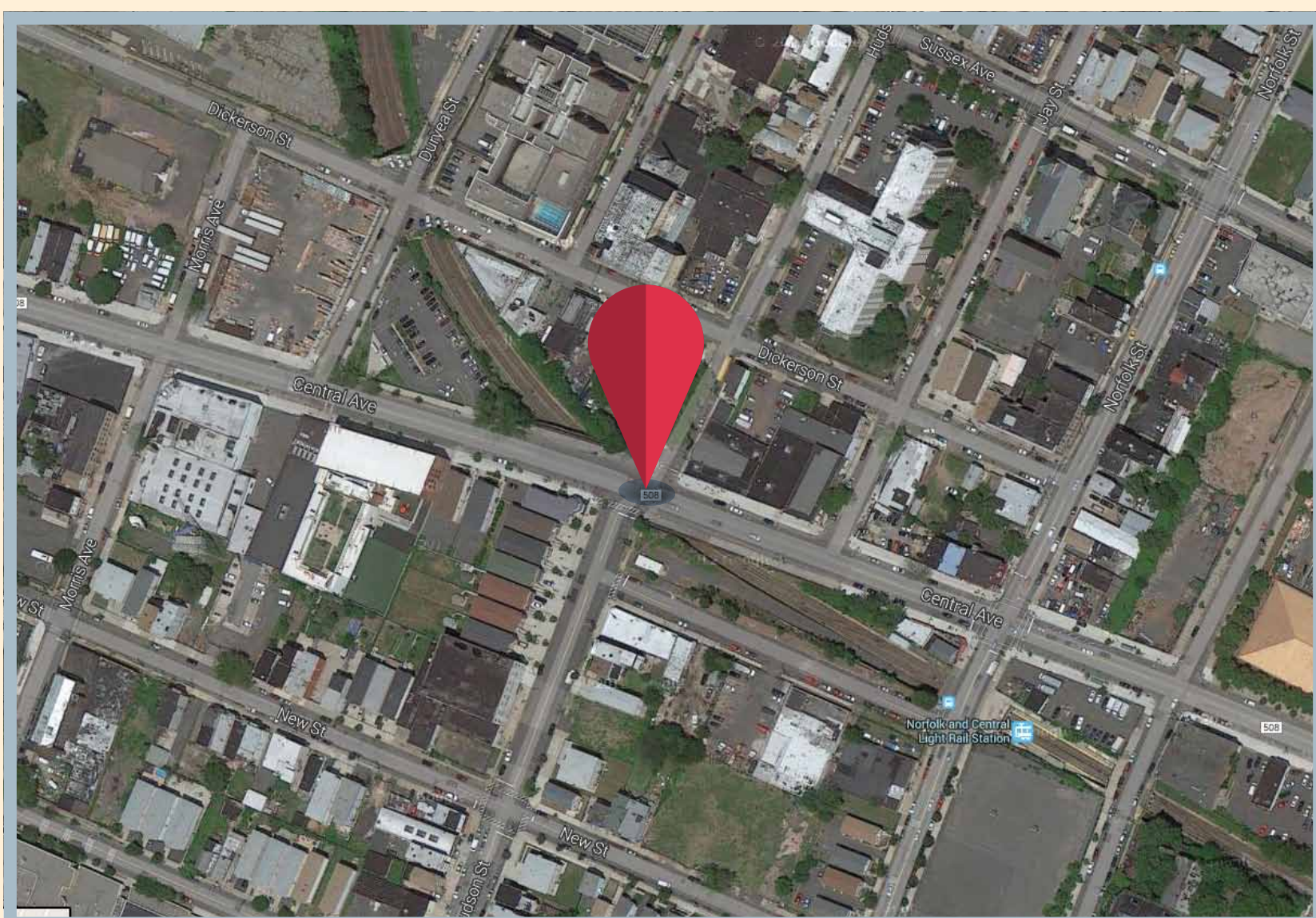
Central Avenue Bridge

FUNDING RECOMMENDATION: \$500,000

LOCATION: City of Newark

ABOUT THE BRIDGE: The Central Avenue Bridge crosses the Newark City Subway between Jay and Duryea streets in the city's University Heights district. The two-lane, 113-foot-long bridge accommodates approximately 25,000 vehicles per day heading to points such as the city's downtown business district, Interstate 280 and higher learning institutions in University Heights.

Built in 1908, the bridge exhibits increasing signs of



MAP DATA ©2015 GOOGLE

deterioration, including rust, cracks and holes in its steel support structures. The bridge is classified as structurally deficient due to its overall poor condition and functionally obsolete due to its inadequate clearance height below. A 10-ton weight limit is currently in effect on the bridge.



PROJECT DESCRIPTION: The project will investigate options for replacing or rehabilitating the bridge.

