



# SOMERSET AND MORRIS COUNTIES:

## Valley Road Bridge (H1110)

**FUNDING RECOMMENDATION:** \$362,350

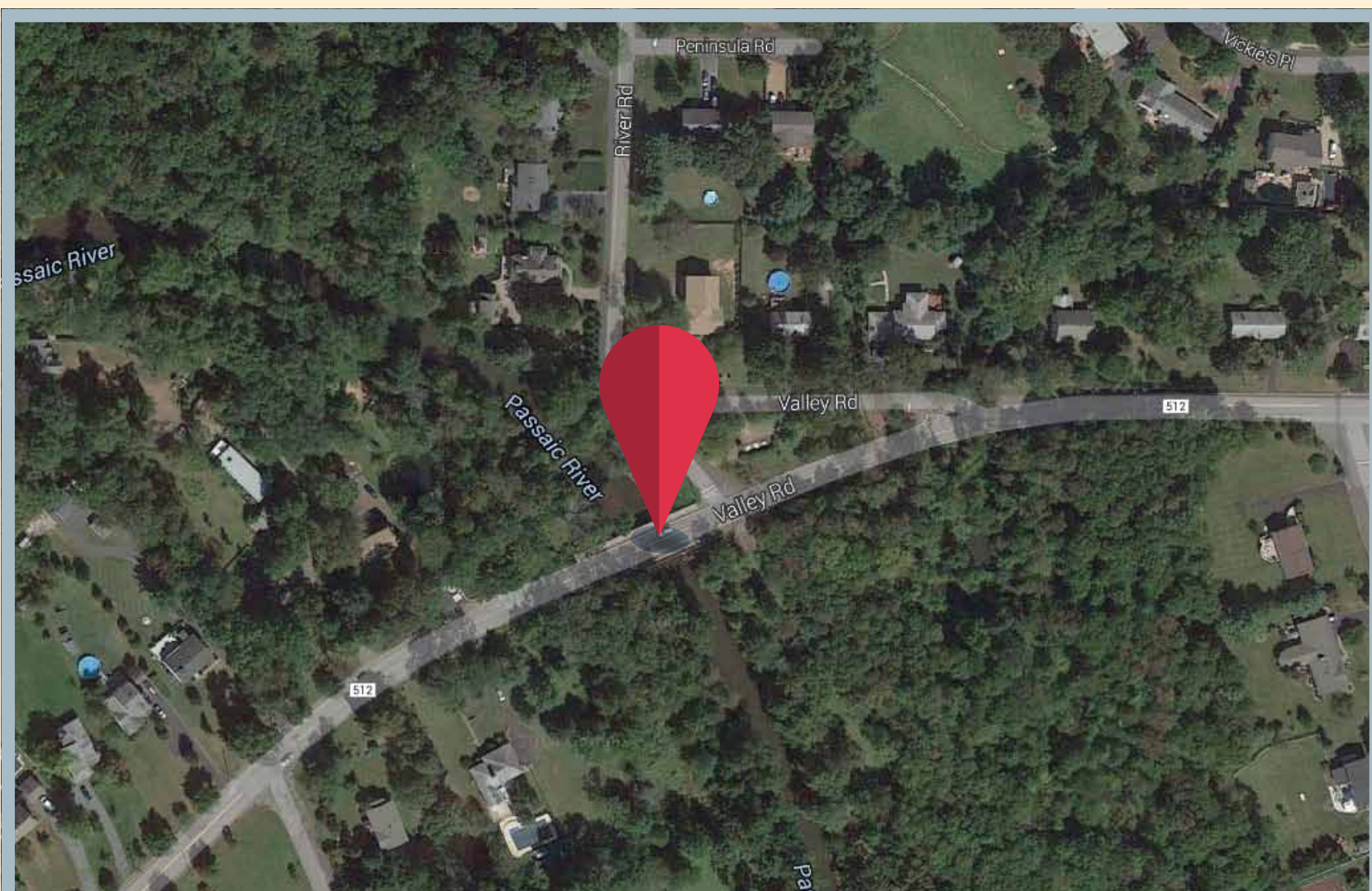
**LOCATION:** Bernards Township and Long Hill Township

**ABOUT THE BRIDGE:** The Valley Road Bridge (H1110) crosses the Passaic River on Valley Road (County Route 512) between Bernards Township in Somerset County and Long Hill Township in Morris County. The two-lane, 103-foot long span handles approximately 19,000 vehicles daily and serves as an access route for Interstate 78 and NJ TRANSIT's Millington Train Station.

Constructed in 1931, the bridge is now classified as structurally deficient. Inspections have revealed scaling, rust, cracks and erosion in the bridge's support structure, as well as deterioration to the sidewalks, curbing and concrete railings. A 16-ton weight limit has been enforced for vehicles since 1993.



**PROJECT DESCRIPTION:** The project will investigate options for replacing or rehabilitating the bi-county bridge. The project will be managed jointly by Somerset and Morris counties, with Somerset County serving as project lead.



MAP DATA ©2015 GOOGLE