

PASSAIC COUNTY:

Main Avenue Corridor

FUNDING RECOMMENDATION: \$750,000 for Fiscal Year 2019

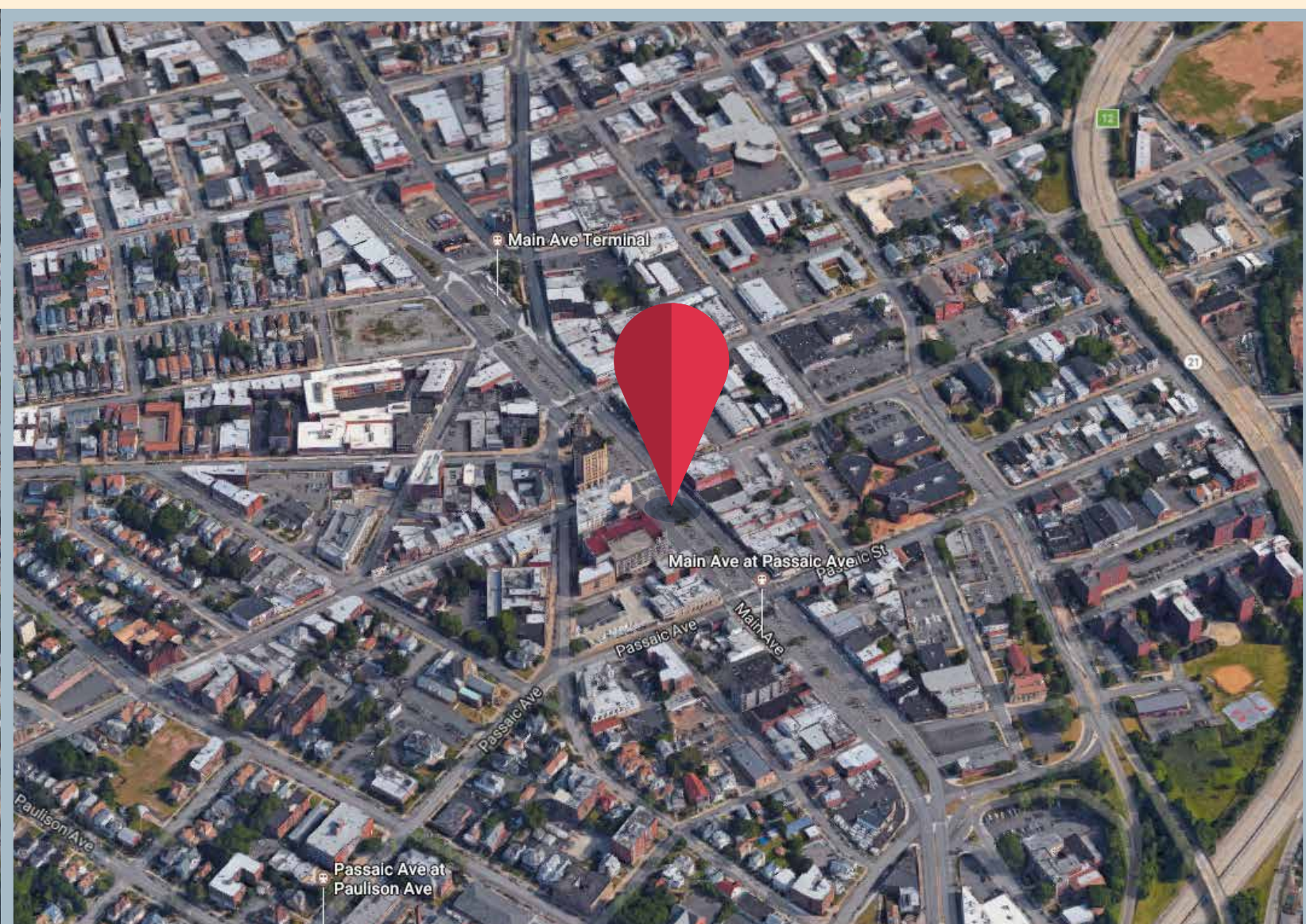
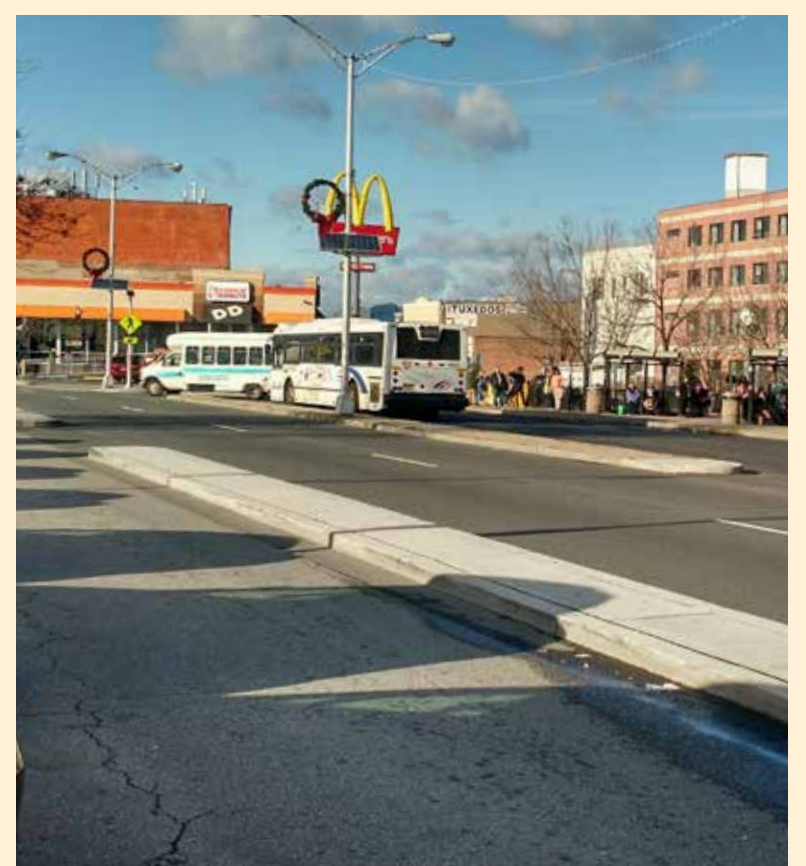
LOCATION: City of Passaic

ABOUT THE BRIDGE: The Main Avenue (CR 601) Corridor from Monroe Street to Gregory Avenue has a center median that serves as a parking area in Passaic’s Central Business District. This configuration, which was created following the abandonment of the Erie Railroad in the 1960s, causes traffic congestion, crashes and safety issues along this portion of the corridor.

The Passaic Bus Terminal is currently located at the northern end of the project area. NJ TRANSIT plans to relocate it just south of Passaic Avenue, where there is an underutilized center median parking area.



PROJECT DESCRIPTION: This study will work toward implementing a Complete Streets plan along Main Avenue, and will include investigating options for a reconfiguration of the corridor, to improve safety for all roadway users, expand the opportunity for economic development in the Passaic Central Business District and relieve congestion. This project will be led by Passaic County.



MAP DATA ©2017 GOOGLE