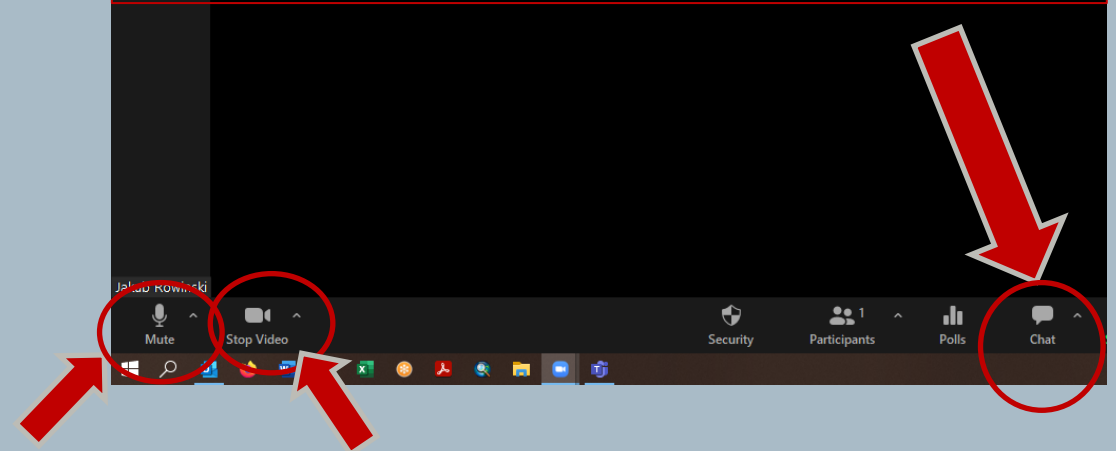


April 17 Freight Initiatives Committee Agenda

- Roll Call of Members
- Approval of Minutes
- Update on NJTPA Freight Division Activities
- Annual Port Industry Update
 - Beth Rooney, Port Director, Port Authority of New York and New Jersey
 - John Nardi, President, Shipping Association of New York and New Jersey
- Two-Minute Reports on Freight Activities from Committee Members
- Next Meeting: Monday, June 20, 2023
- Adjournment

Please use the Chat box to ask questions during the presentations and if requesting credits, please post your name and email, followed by either AICP or PE with your PE license number



Please mute and turn off your video when not speaking.

NJTPA Freight Division Update

- MAP Forum Multi-State Freight Working Group Workshop on Off-Shore Wind Developments on March 23
 - <https://map-forum-njtpa.hub.arcgis.com/pages/freight>
- Continuing work to enhance and update our Goods Movement Strategies for Communities webtool.
- TET Coalition Freight Academy



NJTPA Freight Division Studies

Freight Rail Grade Crossing Assessment Update

- Revised Scoring and Prioritizing of Grade Crossings
- Developed Draft Grade Crossing Profiles for Top 10 Crossings

FY2021 Freight Concept Development Program Studies

- Public Meeting for Roxbury Study on 3/15
- Public Meeting for Bound Brook Study on 3/16
- Finalizing Documentation for Both Studies

Final Study Presentations on June FIC Agenda

April FLC Presentations

- Beth Rooney, Port Director, Port Authority of New York and New Jersey
- John Nardi, President, Shipping Association of New York and New Jersey

Please use the Chat box to ask questions during the presentations and if requesting credits, please post your name and email, followed by either AICP or PE with your PE license number



Please mute and turn off your video when not speaking.

Annual Port Update

April 17, 2023



Port of New York
& New Jersey

**PORT
AUTHORITY
NY NJ**
AIR LAND RAIL SEA



- Landlord port model
- Largest port on East Coast
- 2nd largest in the nation (2022)
- 3,000 acres of waterfront property
- Multi-purpose port: containers, auto, cruise, bulk (dry & liquid)
- Port-wide intermodal rail network



2022 by the Numbers

9.5 Million TEUs



707,000 Rail Lifts



423,000 Autos



**715,000
Cruise Passengers**

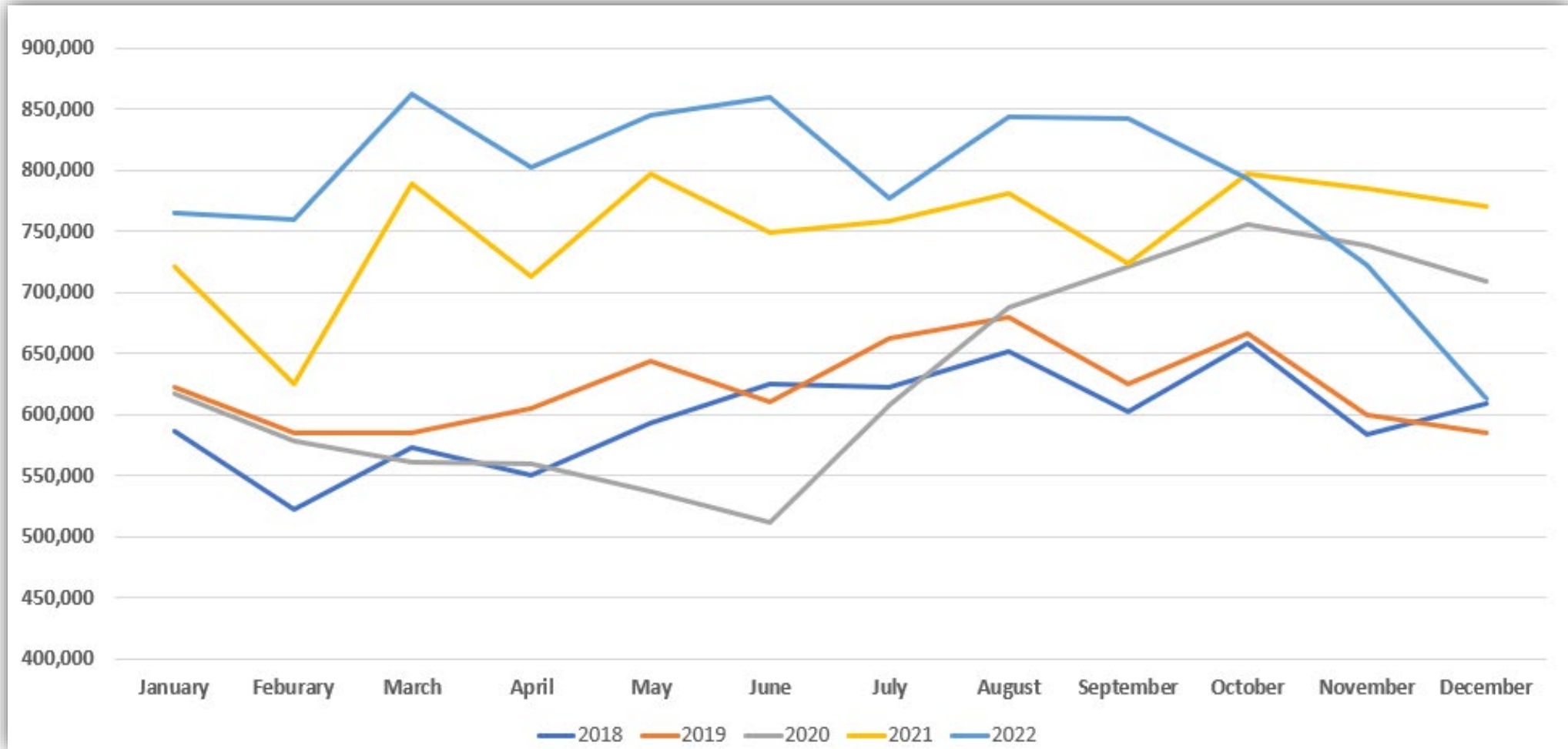


**3.6 Million Metric
Tons of Bulk Cargo**

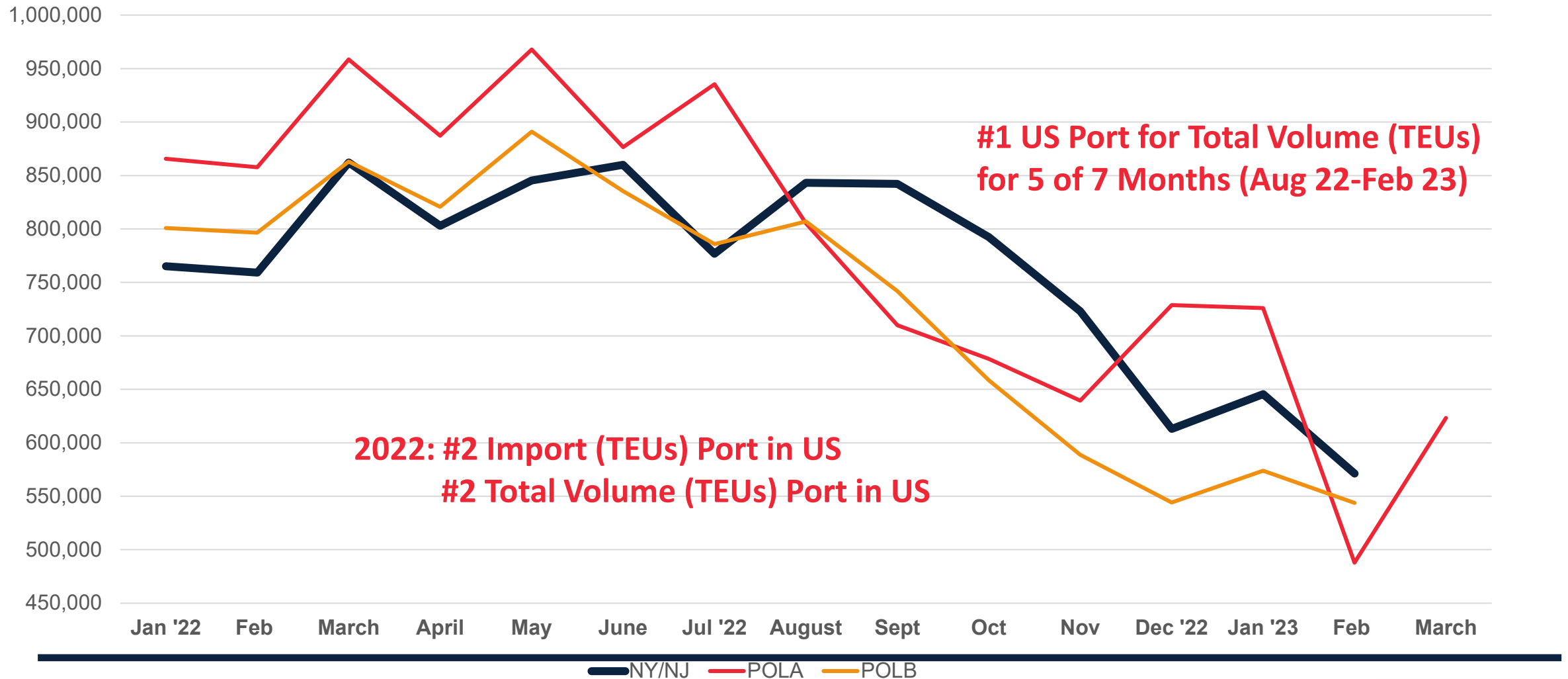


Handling Record Cargo Efficiently & Reliably

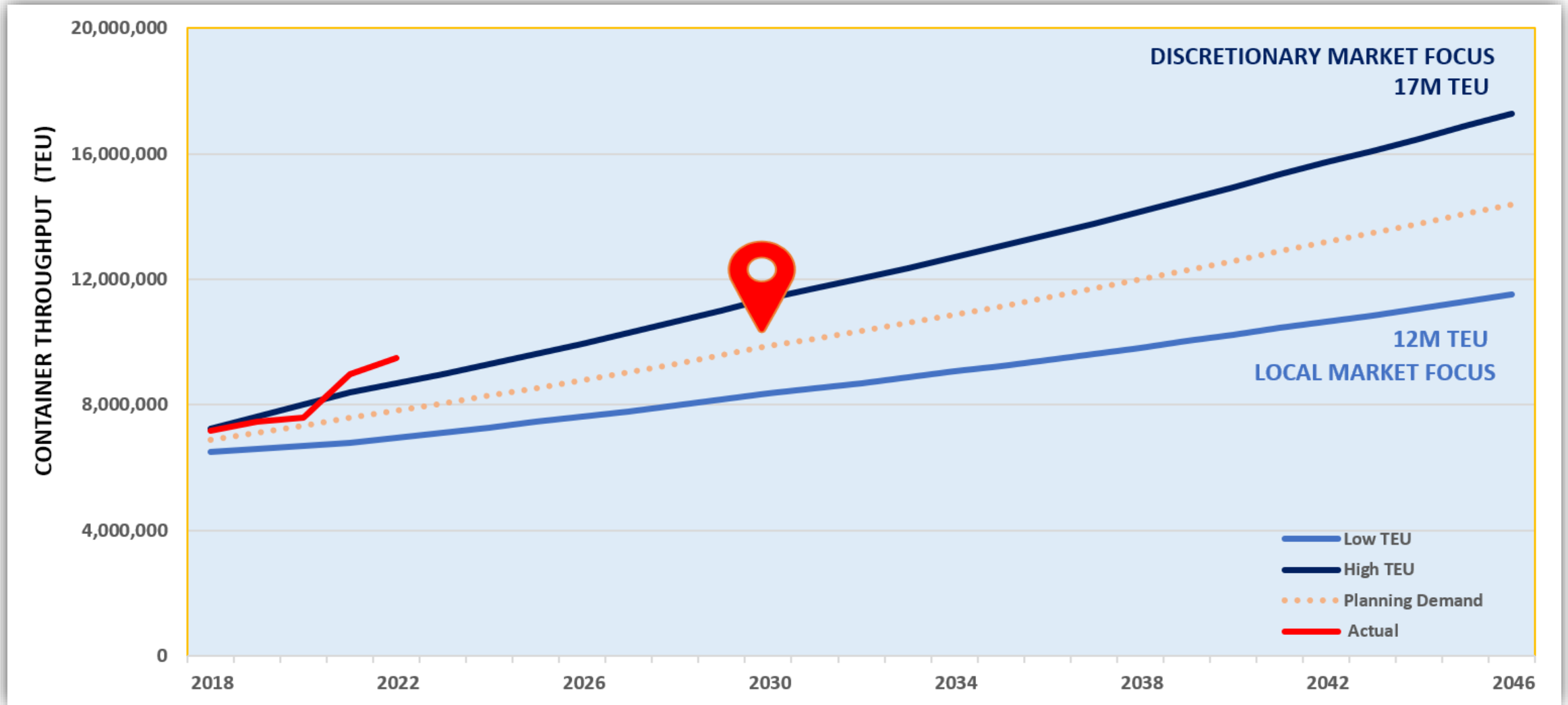
2022 Volumes 27.1% Higher Compared to Pre-Pandemic 2019 Volumes



Container Trends – Top 3 Ports

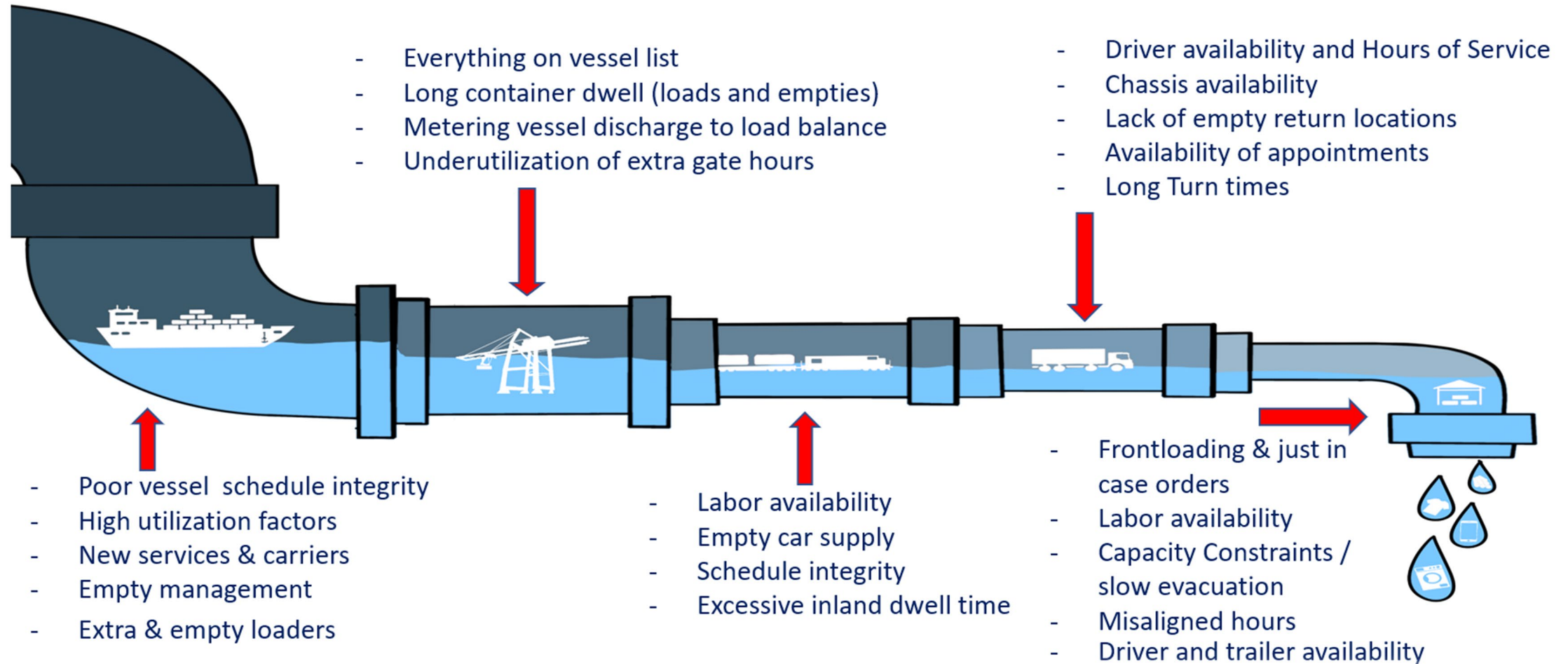


2022 Volumes Exceed Port Master Plan Forecast



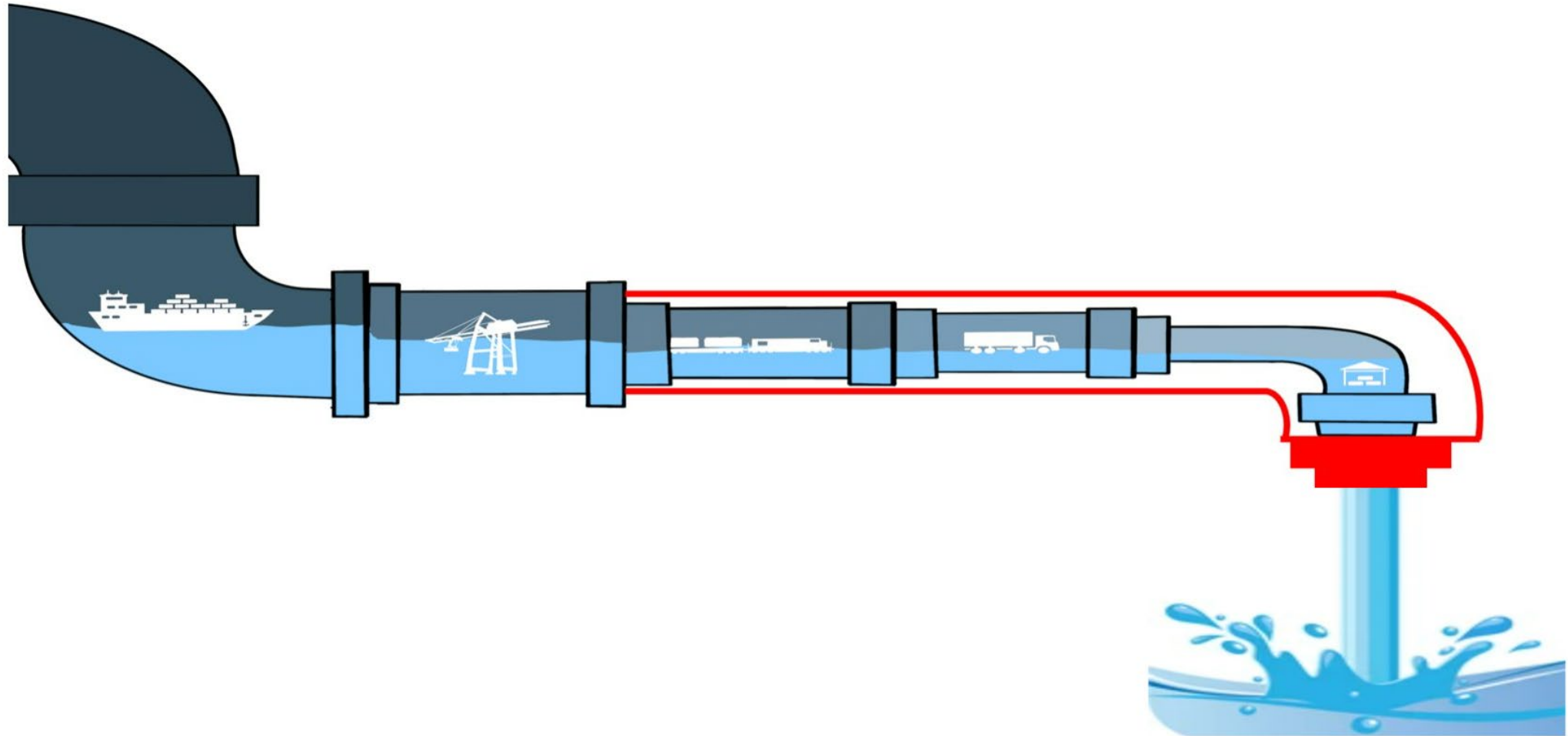
Rightsizing the Supply Chain

Where We've Been...



Rightsizing the Supply Chain

Where We Need to Be...

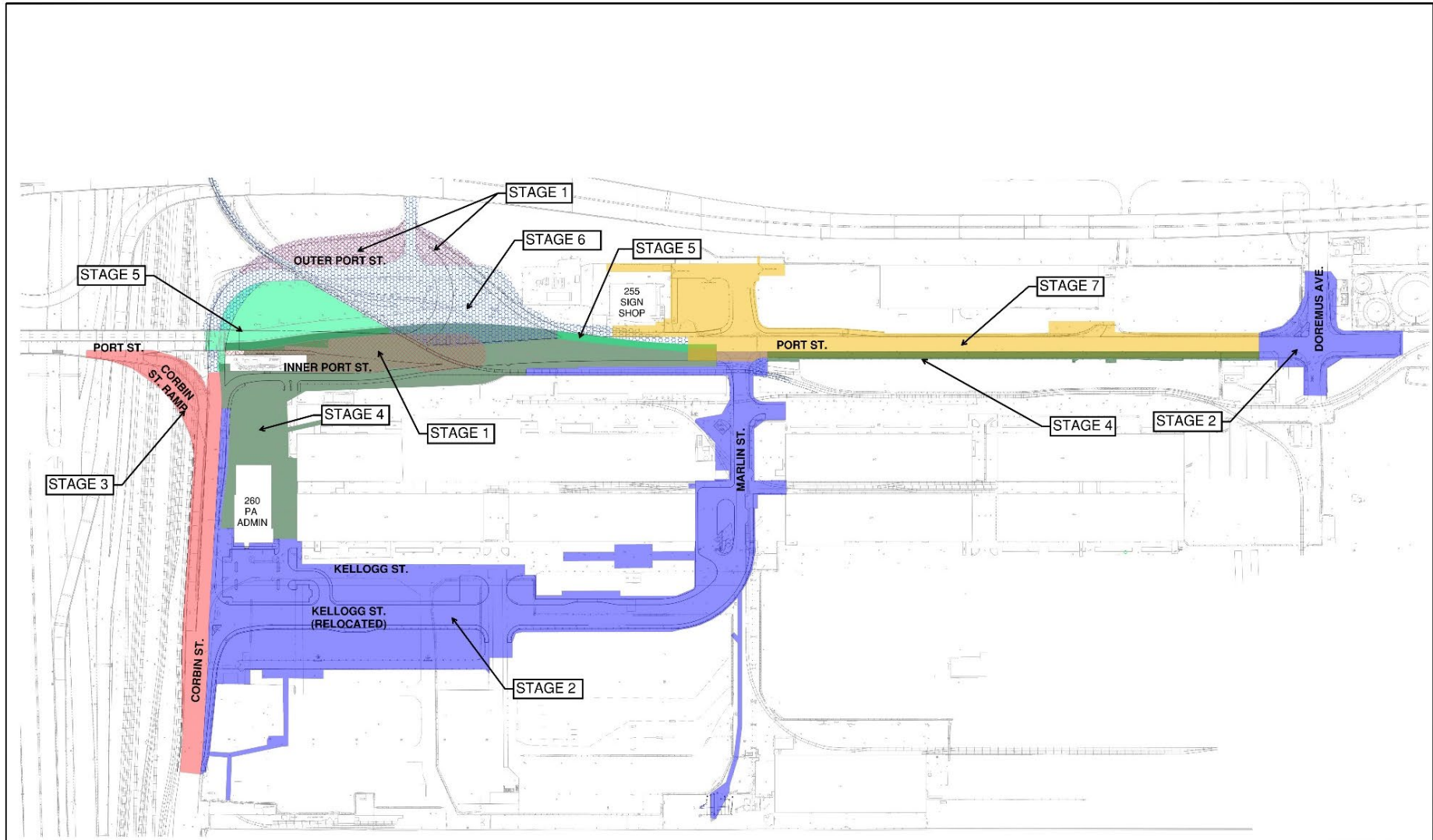


Port Street Corridor Improvement Project

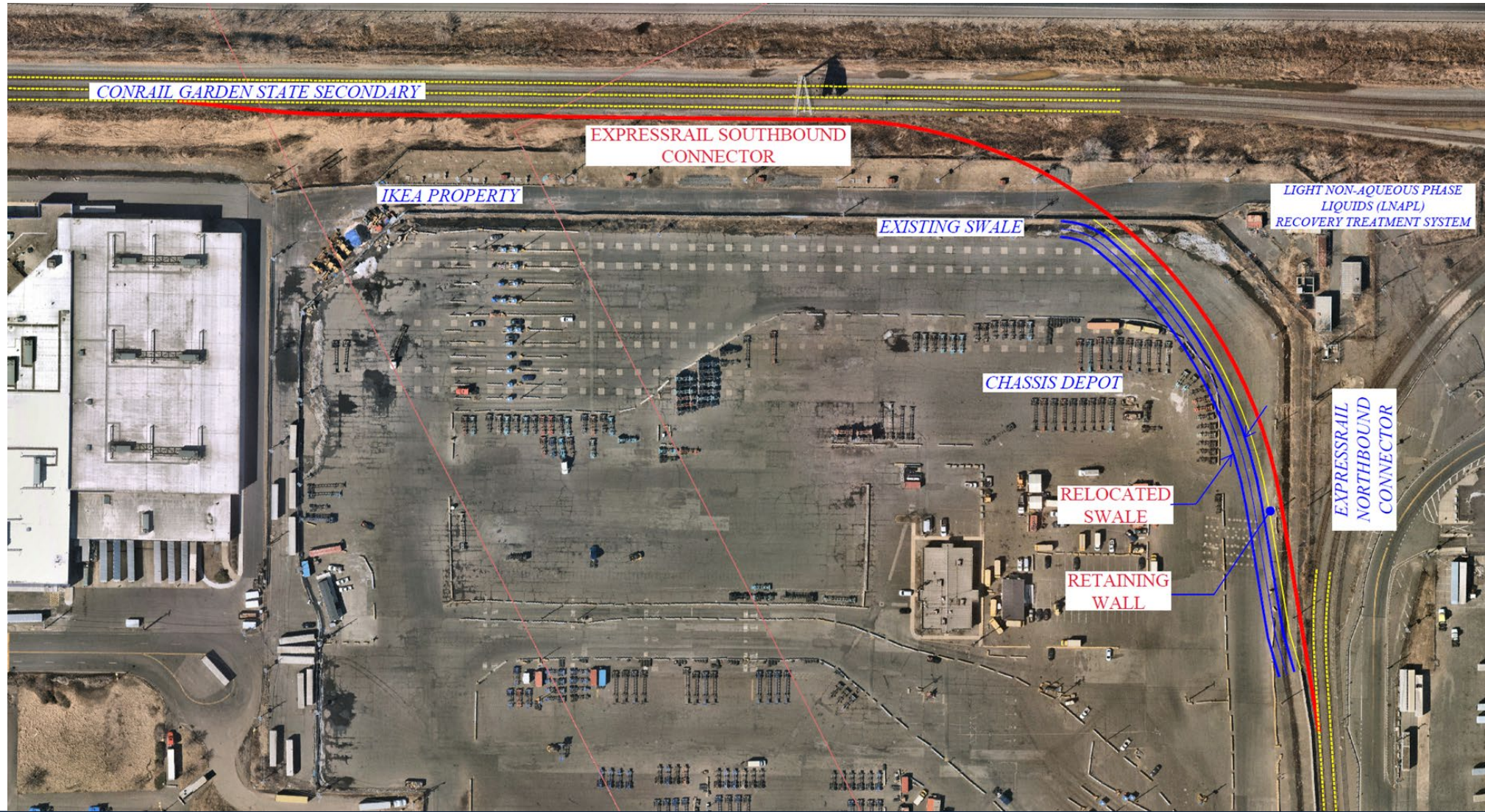


[illegible]

Port Street – 7 Stages of Construction



Southbound Connector



CURRENT EXPRESSRAIL OPERATIONS





**Port of New York
& New Jersey**

www.portnynj.com



@PORTNYNJ

Thank You



North Jersey Transportation Planning Authority

**John Nardi
SANYNJ President**

April 17, 2023

SHIPPING ASSOCIATION OF NY&NJ

Update on Shipping Association of New York and New Jersey

- Name Change
- Mission
- Members
- Challenges and Opportunities

Port of NY&NJ Council on Port Performance

- 2023 Priorities





SHIPPING ASSOCIATION OF NY&NJ MISSION STATEMENT

SANYNJ's mission is to represent the interests of its members (Ocean Carriers and Terminal Operators) in maximizing the efficiency, cost-competitiveness, safety and quality of marine cargo operations in the Port of New York and New Jersey.

NYSA will accomplish this mission:

- 1. Through negotiation of fair collective bargaining agreements (CBA) with the International Longshoremen's Association and the Port Police and Guards Union**
- 2. Through effective implementation of those collective bargaining agreements; and judicious management of the various funds created thereunder**
- 3. Through strong advocacy of our members' interests in the public, government and business communities**
- 4. Through close collaboration with other maritime and maritime-related organizations who share common interests**
- 5. Through partnering with public agencies tasked with the improvement of the region's transportation system**



SHIPPING ASSOCIATION NY&NJ MEMBER COMPANIES

- ✓ **ACGI Shipping**
- ✓ **Allied Universal Services**
- ✓ *The American Sugar Refining Company*
- ✓ *APL, Ltd.*
- ✓ *APM Terminals Elizabeth*
- ✓ *Atlantic Container Line*
- ✓ *Bermuda Agencies Limited*
- ✓ *Cargotec Crane & Electrical Services*
- ✓ *Ceres Atlantic Terminals, Inc.*
- ✓ *CMA-CGM (America), LLC*
- ✓ *Columbia Coastal Transport, LLC*
- ✓ *COSCO Container Lines Americas, Inc.*
- ✓ **Doyle Security Services**
- ✓ **Ellerman City Liner Services**
- ✓ *Essex Cement Company*
- ✓ *Evergreen Shipping Agency (America) Corp.*
- ✓ *GCT Bayonne LP*
- ✓ *GCT New York LP*
- ✓ *Hapag-Lloyd (America) Inc.*
- ✓ *Hoegh Autoliners AS*
- ✓ *Hyundai America Shipping Agency*
- ✓ *"K" Line America, Inc.*
- ✓ **Kalyпсо Compagnia di Navigazione**
- ✓ *M. P. Howlett, Inc.*
- ✓ *Maersk Inc.*
- ✓ *Maher Terminals, L.L.C*
- ✓ *Mediterranean Shipping Company*
- ✓ *MOL (America), Inc.*
- ✓ *NYK Line (North America) Inc.*
- ✓ *OOCL, (USA), Inc.*
- ✓ *Port Newark Container Terminal L.L.C.*
- ✓ *Ports America, Inc.*
- ✓ *Red Hook Container Terminal, L.L.C.*
- ✓ **Sea Lead Shipping**
- ✓ *SIMS Metal Management*
- ✓ *Turkon America, Inc.*
- ✓ **Terminal Security Solutions**
- ✓ *Wallenius Wilhelmsen Logistics*
- ✓ **Wan Hai Lines**
- ✓ *Yang Ming Marine Transport Corp.*
- ✓ *Zim Integrated Shipping Services Ltd.*
- ✓ *American Maritime Service of NY,*
- ✓ *Bay Container Repairs of New Jersey*
- ✓ *Container Services of New Jersey, Inc.*
- ✓ *FAPS, Inc.*
- ✓ **Nissan Intl Transport**
- ✓ **Novelties Distribution**
- ✓ *Portwide Cargo Securing Company*
- ✓ *ZPMC NA East Coast*

Recent Additions



SANYNJ CHALLENGES & OPPORTUNITIES

- **Current CBA between the NYSA and ILA expires September 30, 2024**
 - **Extension discussions**
 - **Improve productivity**
 - **Absenteeism**
 - **Expanded supply chain hours of operation**
- **Improve the speed of supplying NJ employers with labor**
 - **New Jersey withdrawal from Waterfront Commission Compact**
 - **New Jersey State police assuming WC responsibilities**
- **Continued cargo growth to pay for the CBA benefits. Our members and stakeholders need growth to pay for their investments**
 - **Inject ourselves in any issue that will impact cargo volumes**
 - **Washington Legislation – attack on antitrust immunity**
 - **Workforce development – throughout the supply chain**
 - **Council on Port performance**





Council On Port Performance

*A Collaborative Effort
for a Collective Change*

2023 Priorities



COUNCIL ON PORT PERFORMANCE

Members:

- Port Authority of NY&NJ – Co Chair
- Shipping Association NY&NJ– Co Chair
- Metropolitan Marine Maintenance Contractors
- Marine Terminal Operators (2)
- International Longshoremen's Association
- Trucker Associations (2)
- Rail Operators (2)
- Beneficial cargo owners (3)
- NVOCC's
- US Customs
- US Coast Guard
- CES Operators
- Ocean Carriers (2)
- Chassis Owners (3)
- MARAD – Maritime Administration
- NJTPA
- Work Force Development
- Warehousing Association



CPP Update 2023 Priorities



- Meetings in 2023 will continue on a monthly basis, unless industry trends warrant an additional cadence for further collaboration
- Prioritize long term issues related to environmental policy, land use improvements, chassis availability measures, and infrastructure development
 - Place a focus on infrastructure, specifically utility and electric charging capabilities through NJ and broader region
 - Further develop ESG (Environmental, Social Justice, Governance) policies, important to many companies and stakeholders
 - **WORKFORCE DEVELOPMENT !!**
 - Interest in better understanding grant opportunities for electrical infrastructure and equipment



CPP Update

2023 Priorities:

- **Develop a strategy for extended hours and moving towards 24/7 operations**
 - **How to effectively handle the new level of volume**
 - Behavioral shift; improve efficiency and sustainability
 - Establish steps to open earlier (possibly 4 am) or remain open longer
 - Discuss with labor during upcoming negotiations
- **Develop shipper outreach and marketing strategy**
 - **Focus outreach on BCO's that have diverted cargo to NY/NJ from U.S. West Coast**
 - Promote the stability of the NY/NJ gateway
 - **Port of NY & NJ joint marketing strategy with Marine Terminal Operators**
 - Tell a collective story through ads/campaigns in national trade publications
 - **Potential to create a "Welcome Packet" for new or interested shippers utilizing the NY/NJ gateway**
 - Local rest stops, chassis rental providers, warehouse/DCs, regional resources, etc.

CPP Update

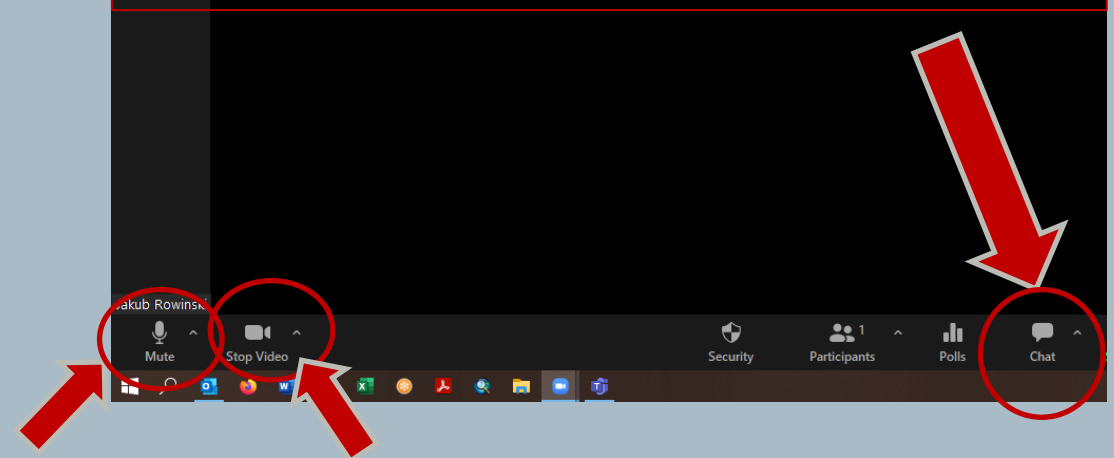
Thank you !



April Freight Initiatives Committee



Please use the Chat box to ask questions during the presentations and if requesting credits, please post your name and email, followed by either AICP or PE with your PE license number

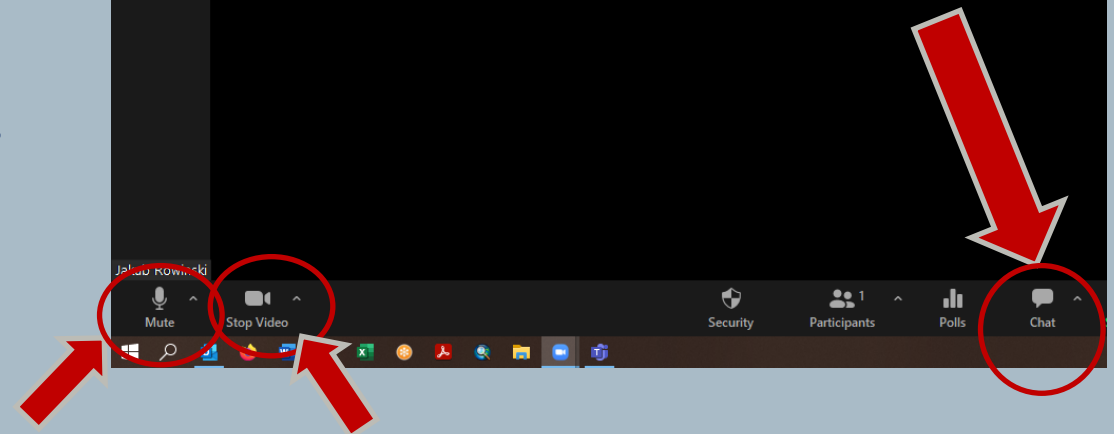


Please mute and turn off your video when not speaking.

April 17 Freight Initiatives Committee Agenda

- Roll Call of Members
- Approval of Minutes
- Update on NJTPA Freight Division Activities
- Annual Port Industry Update
- Two-Minute Reports on Freight Activities from Committee Members
- Next Meeting: Monday, June 20, 2023
- Adjournment

Please use the Chat box to ask questions during the presentations and if requesting credits, please post your name and email, followed by either AICP or PE with your PE license number



Please mute and turn off your video when not speaking.