



NJTPA Planning Tools Expo

ArcGIS Hub Overview

Justin Cusick and Daniel Wickens

Esri

Everyone wants their community to be...



How do we...

Protect the
Environment

Create More
Affordable Housing

Reduce
Homelessness

Use Less
Energy

Create
More Jobs

Improve Disaster
Preparedness

Conserve
Water

Make Commuting
Easier

Increase
Recreation
Opportunities

Improve Emergency
Response Times

Increase Access for
Disabled People

Reduce Traffic
Congestion



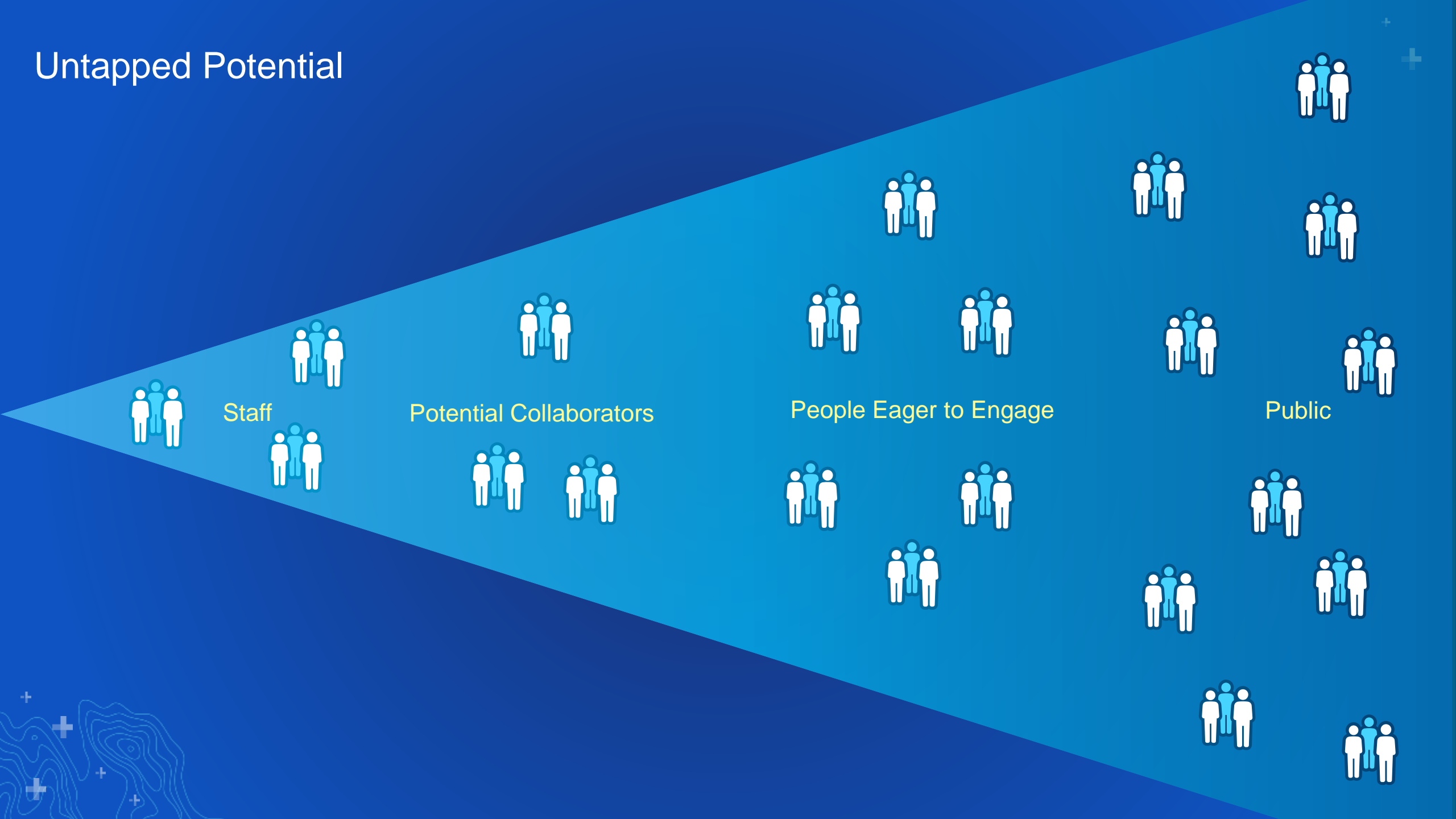


Leverage the
Broader Community



Leverage the
Broader Community

Untapped Potential



Initiatives provide focus and alignment

INITIATIVE

Staff



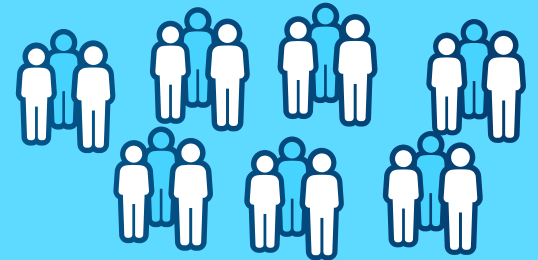
Trusted Collaborators



Actively Engaged Public



Informed Public



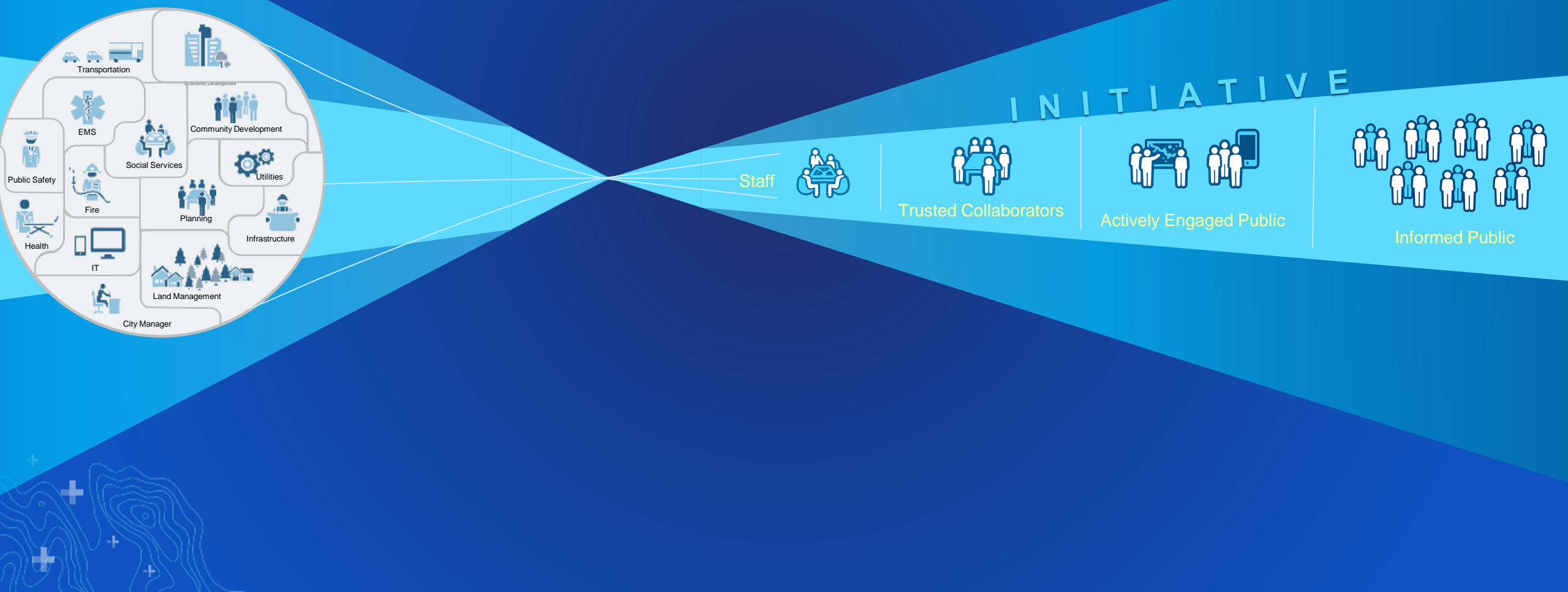
And they use data from multiple departments



Staff



Framework for collaboration and engagement



ArcGIS Hub is an easy-to-configure cloud platform that organizes people, data, and engagement tools to accomplish Initiative goals.



Sites

Modern, Responsive Webpages



Team(s)

Coordinate Activities + Sharing



Feedback

Discussions, Surveys, Crowdsourcing



Content + Apps

Easy to deploy & configure tools



Community Identities

Access to data, tools, teams, alerts



Events

Schedule and Gather People



Initiatives

Organize Content & Collaboration



Subscriptions

Community Notifications + Alerts



Performance Tracking

Initiative & Engagement Dashboards

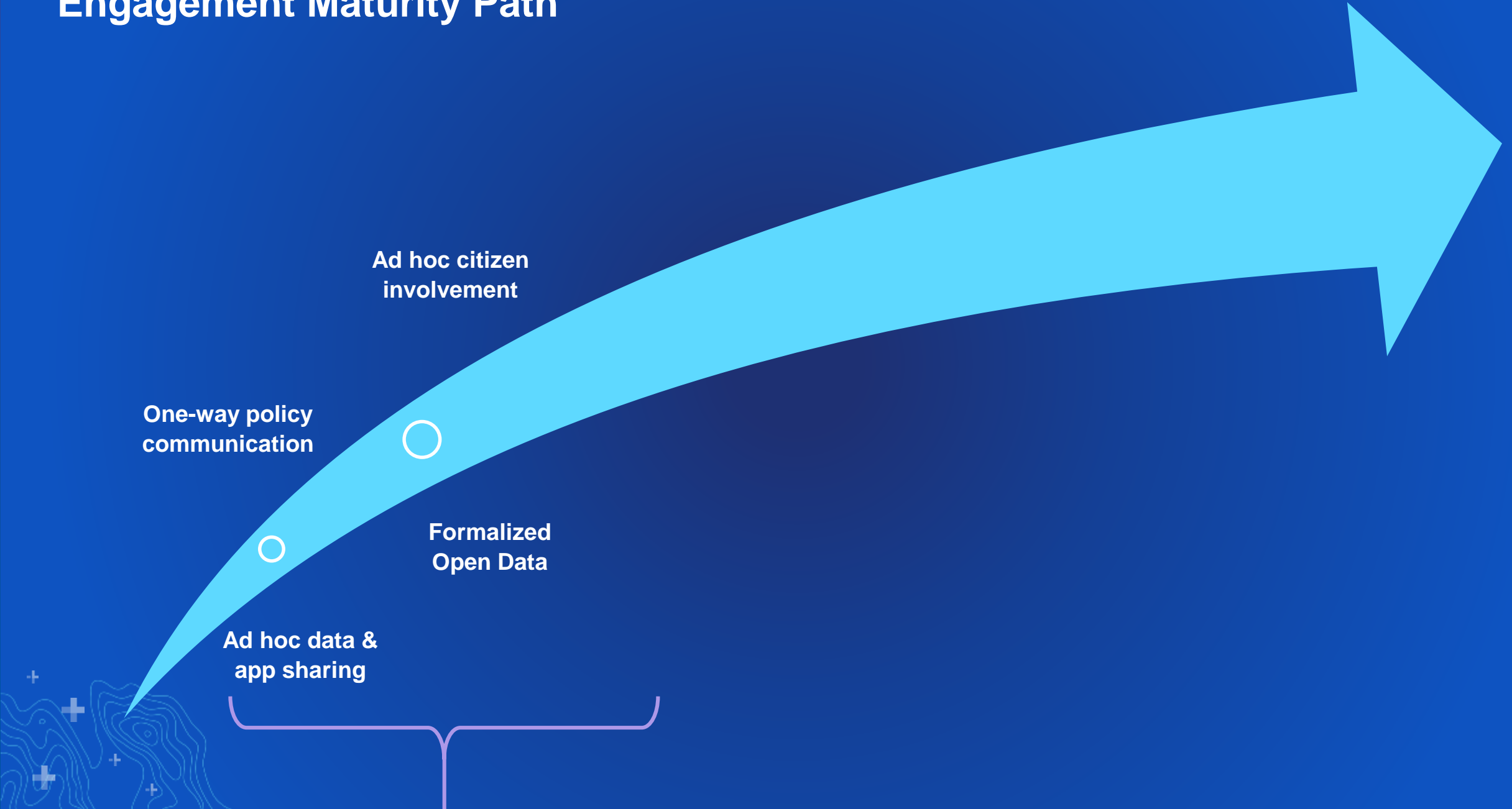


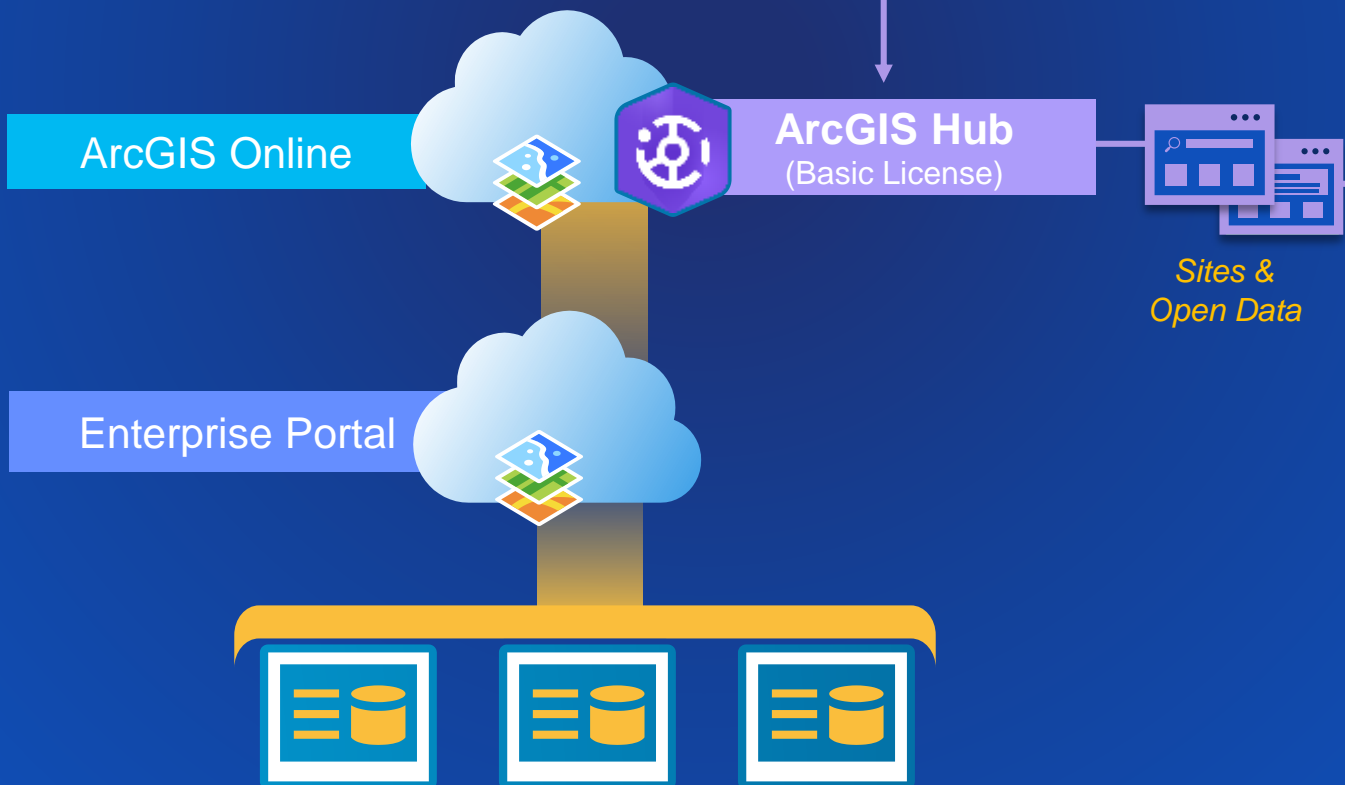
Where do you start?

The typical evolution...



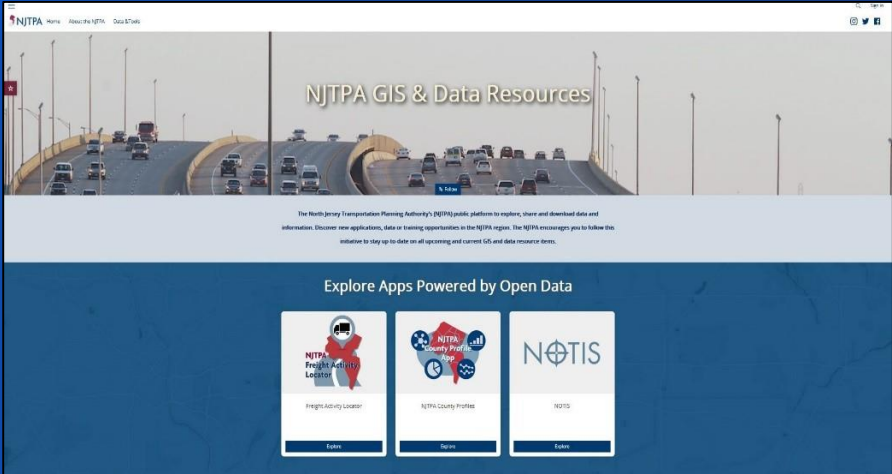
Engagement Maturity Path



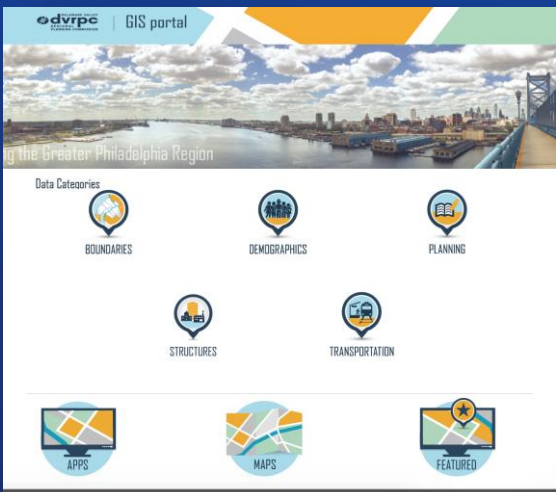


Hub sites start the engagement journey...over 2400 organizations

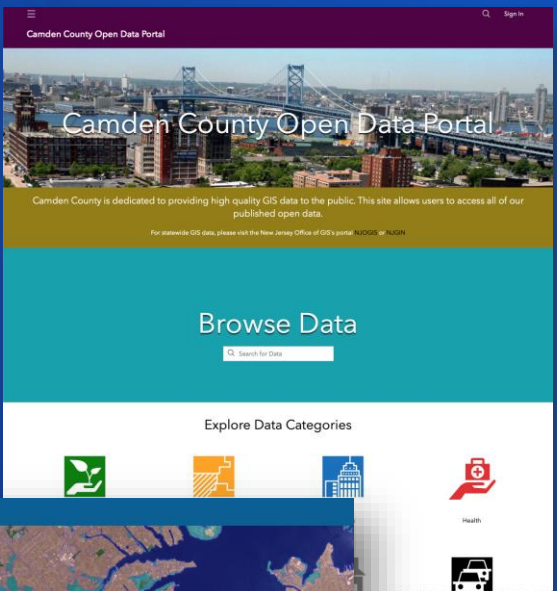
NJTPA



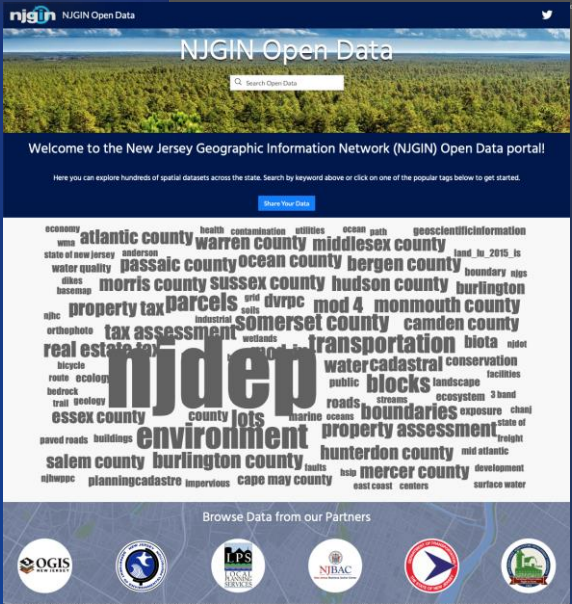
DVRPC



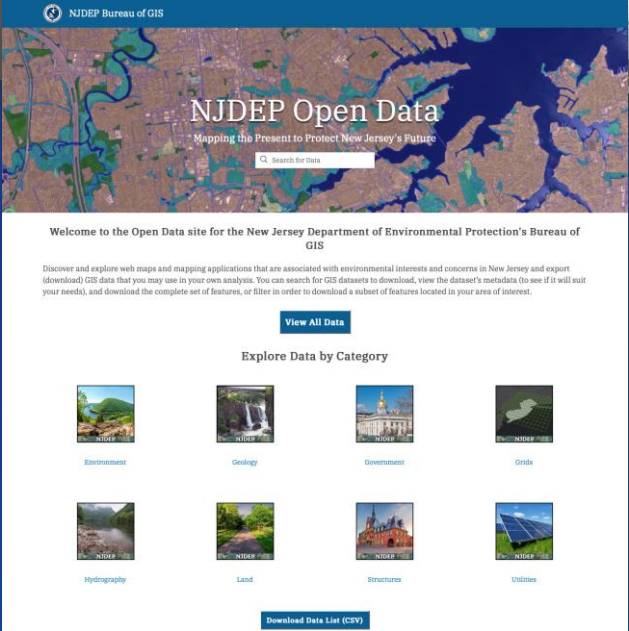
Camden County



Monmouth County



NJOGIS

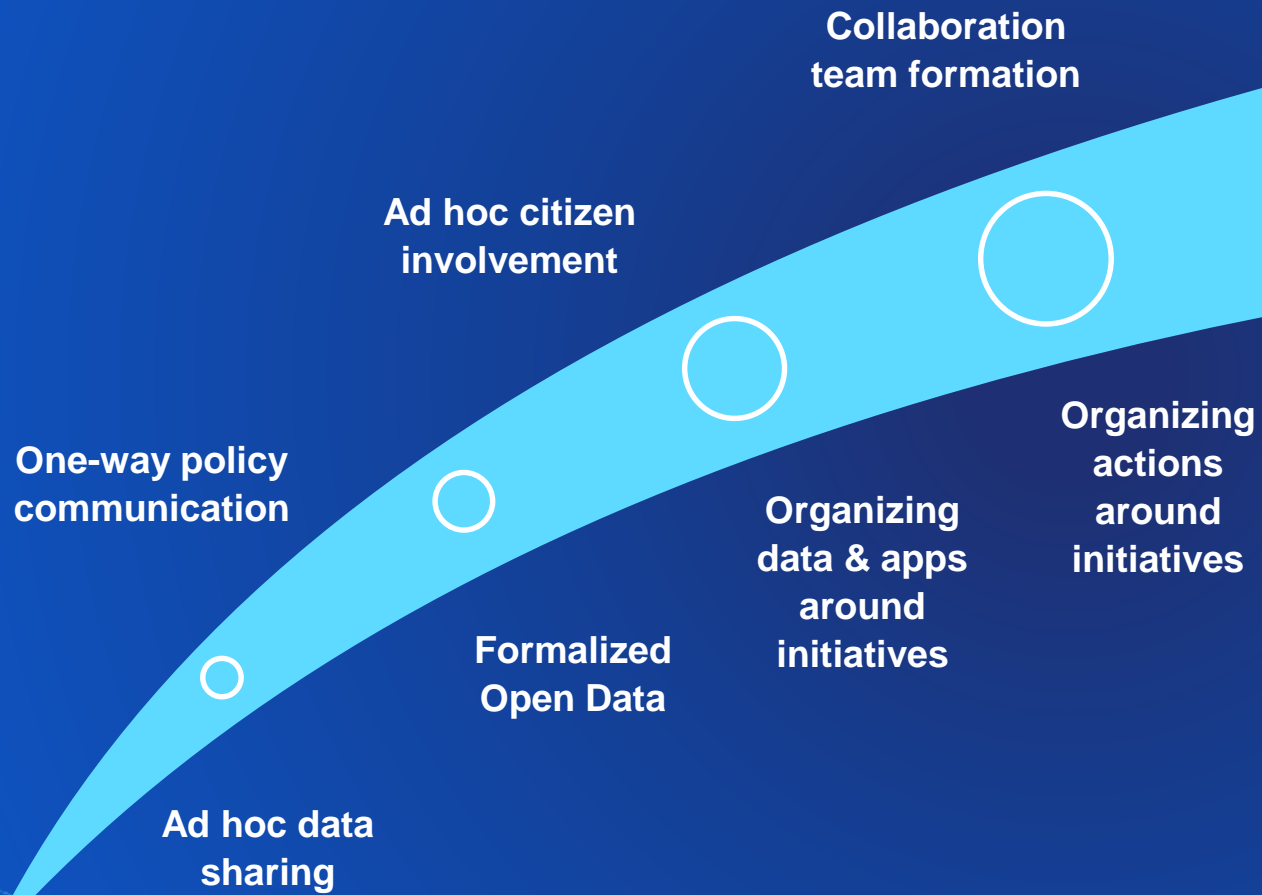


NJDEP

NJTPA Open Data Portal

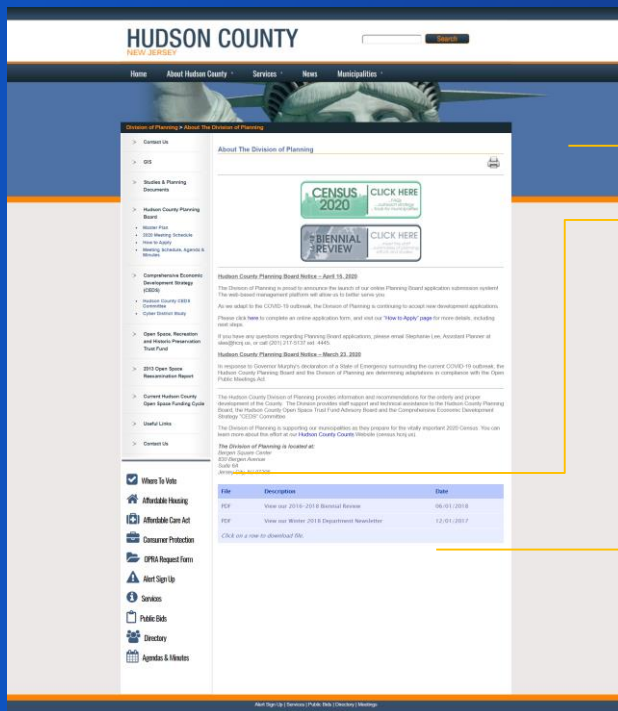


Engagement Maturity Path



Data-Driven Initiatives... Bridging the Gap

Executive
messaging



Initiatives

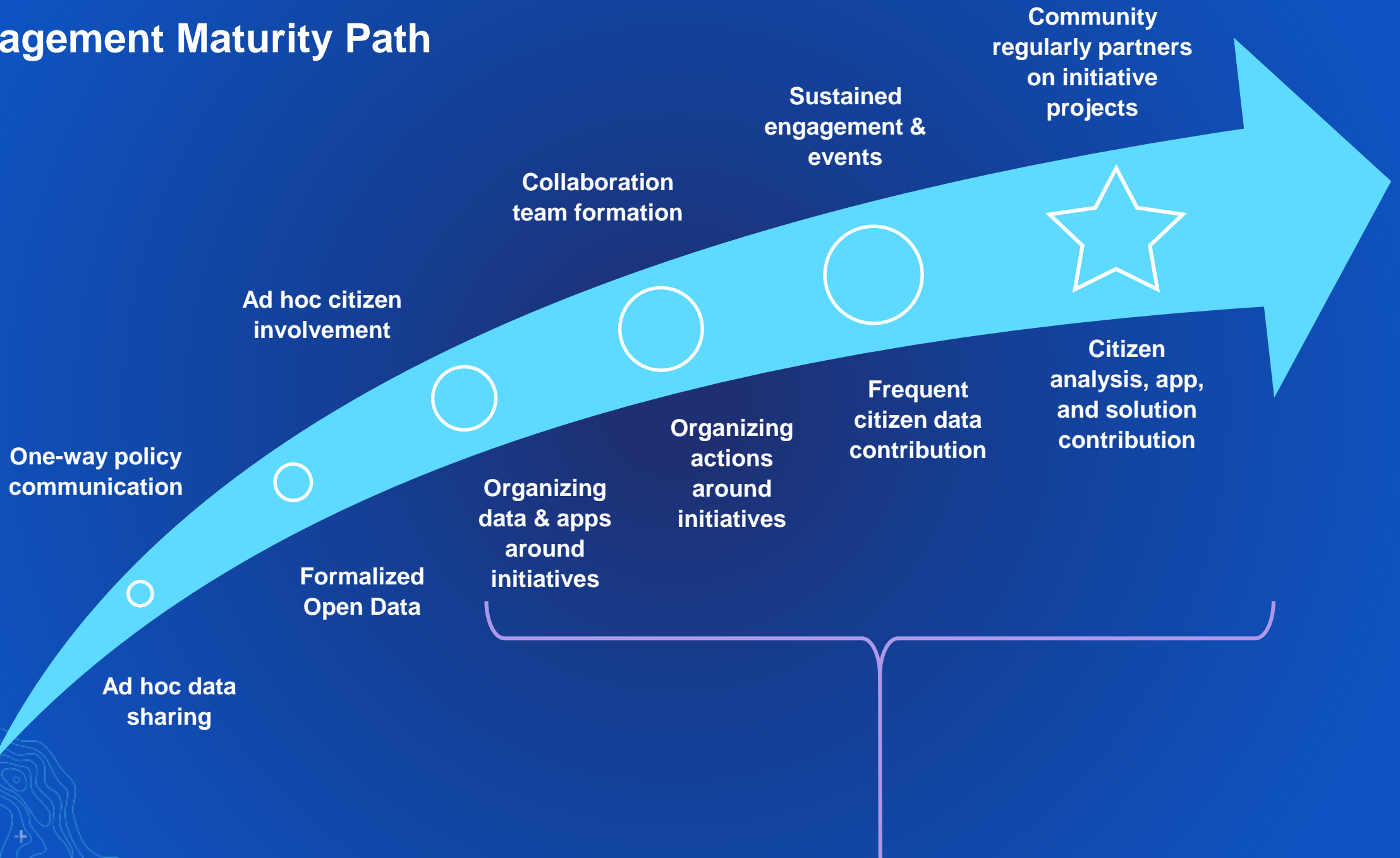


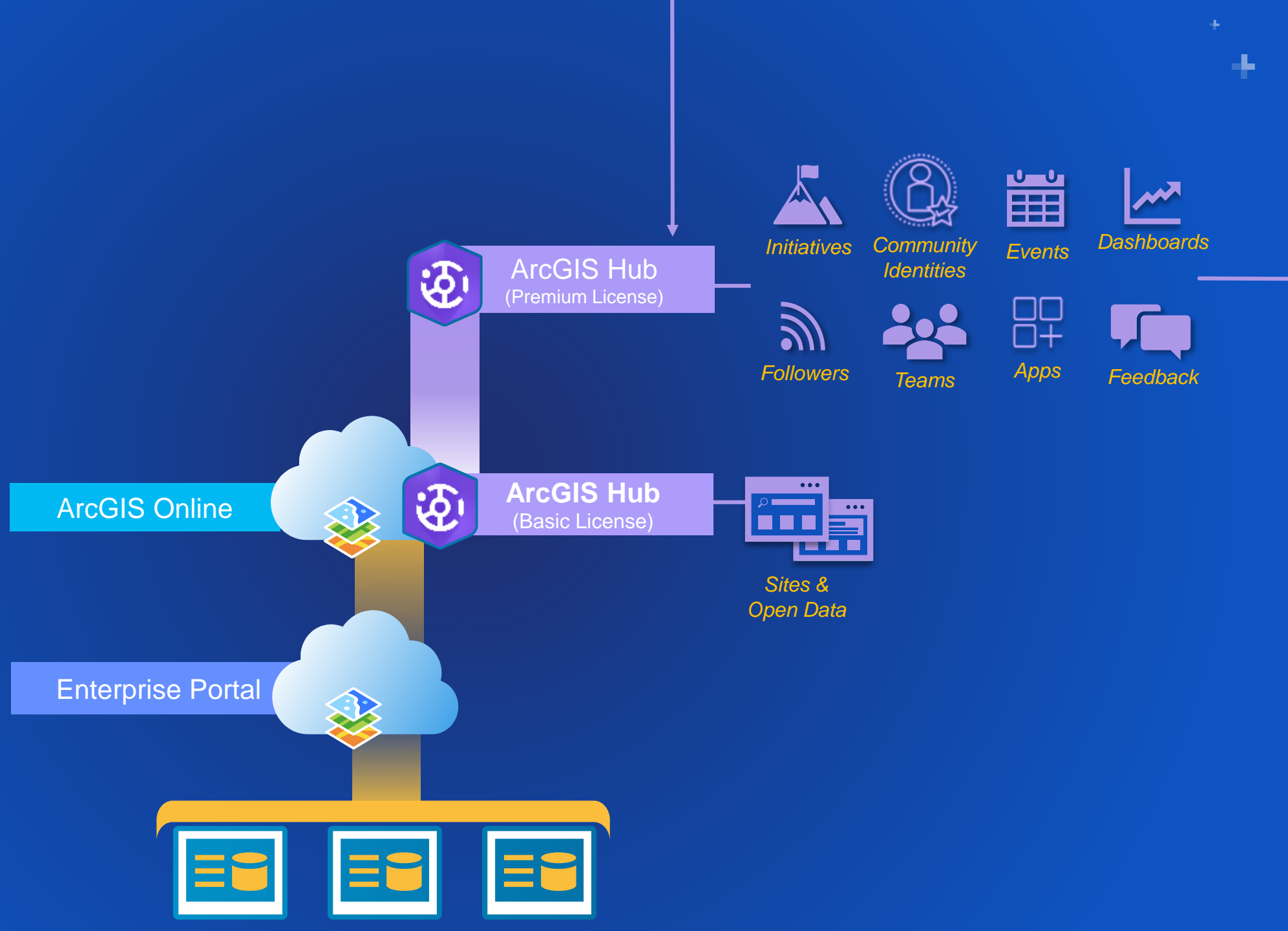
GIS Content



Inform, Monitor, Listen

Engagement Maturity Path





NJTPA Hub Premium Initiative Examples

Home

Demographic Profile

Freight Working Group

Resilience Committee

Performance Measures

Home

News

Calendar

Metropolitan Area Planning (MAP) Forum

The Metropolitan Area Planning (MAP) Forum is a consortium of 10 Metropolitan Planning Organizations (MPOs) from New Jersey, New York, Connecticut and Pennsylvania that have entered into an agreement to better coordinate planning activities in the multi-state region. The MAP Forum includes: Capital Region Council of Governments, Connecticut Metropolitan Council of Governments, Lehigh Valley Planning Commission, Lower Connecticut River Valley Council of Governments, Naugatuck Valley Council of Governments, New York Metropolitan Transportation Council, North Jersey Transportation Planning Authority, Orange County Transportation Council, South Central Regional Council of Governments and the Western Connecticut Council of Governments.

Click the button below to get the latest updates.

Learn More

Did You Know?

The MAP Forum consists of 10 different MPOs, each bolstering a diverse population and demographic profile. The MAP Forum includes parts of Connecticut, New Jersey, New York and Pennsylvania. A snapshot of the region is provided in the map to the right. The demographic indicators below represent the entire MAP Forum region. To learn more about the demographic profile of the MAP Forum region click [here](#).

Total Population

24,004,734

Source: US Census Bureau

% Hispanic Population

24.3

Source: US Census Bureau

% Minority Population

52.2

Source: US Census Bureau

Metropolitan Area Planning (MAP) Forum



Planning for Emerging Centers

Raritan Study

About the Study

Emerging Centers

Get Involved

Smith and Richard Farrier, to construct the stone abutments and center pier. Construction of the Novius Street Bridge marked the first project of the Board of Chosen Freeholders. The bridge was designed by a professional civil engineer, F. A. Dunham, and was the construction of a bridge. The Bridge is listed on the New Jersey Register of Historic Places on September 11, 1992 and the National Register of Historic Places on September 11, 1992.

Borough of Raritan Sustainable Economic Development Plan Study Area

Source: US Census Bureau, 2010

Planning for Emerging Centers Study

The Borough of Raritan is working with the North Jersey Transportation Planning Authority (NJTPA) to create a Sustainable Economic Development Plan.

This project is being funded through the NJTPA's Planning for Emerging Centers Program, a competitive grant that provides technical assistance to municipalities to create more sustainable, transit-supportive and walkable communities.

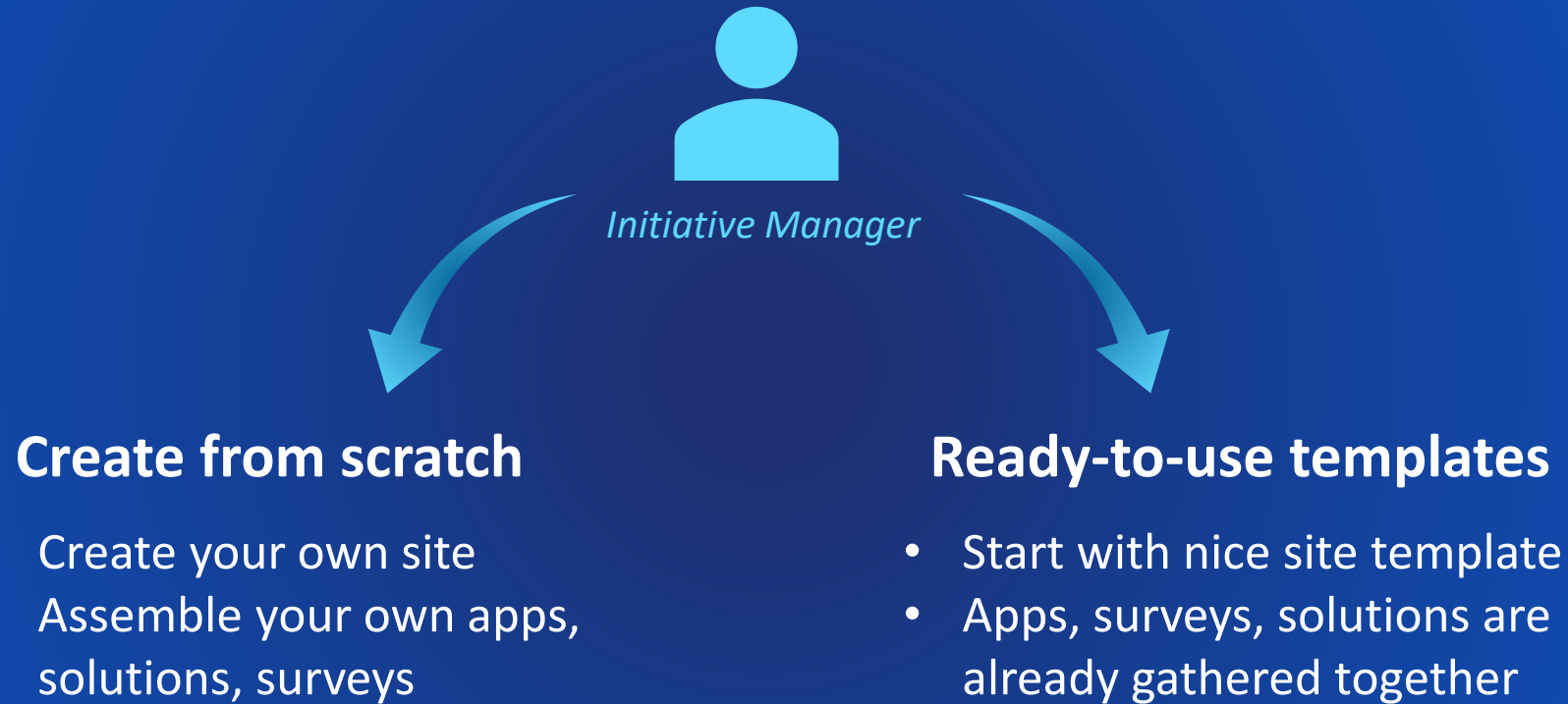
This study will develop a plan for Downtown Raritan to maintain and expand the existing employment and economic base while identifying land use and mobility strategies to realize these goals.

More Information

Planning for Emerging Centers Study



Creating Initiatives... Users have two options



What is an Ready to Use Initiative?

A Ready to Use Initiative is a carefully crafted bundle of ArcGIS capabilities designed to give users broad & essential tools needed to plan, create and execute their strategies around a policy commitment or outcome they need to achieve.

- ✓ Modern / mobile ready websites
- ✓ Engagement tools
- ✓ Surveys
- ✓ Apps & Solutions
- ✓ Event capabilities
- ✓ Dashboards
- ✓ Infographics, Charts & Maps
- ✓ Analytic Capabilities
- ✓ Authoritative Data



Banner
Mission

Apps
Analysis

Performance

Related Initiatives
Sub-sites
Success Stories

Maps & Data
Infographics
Surveys

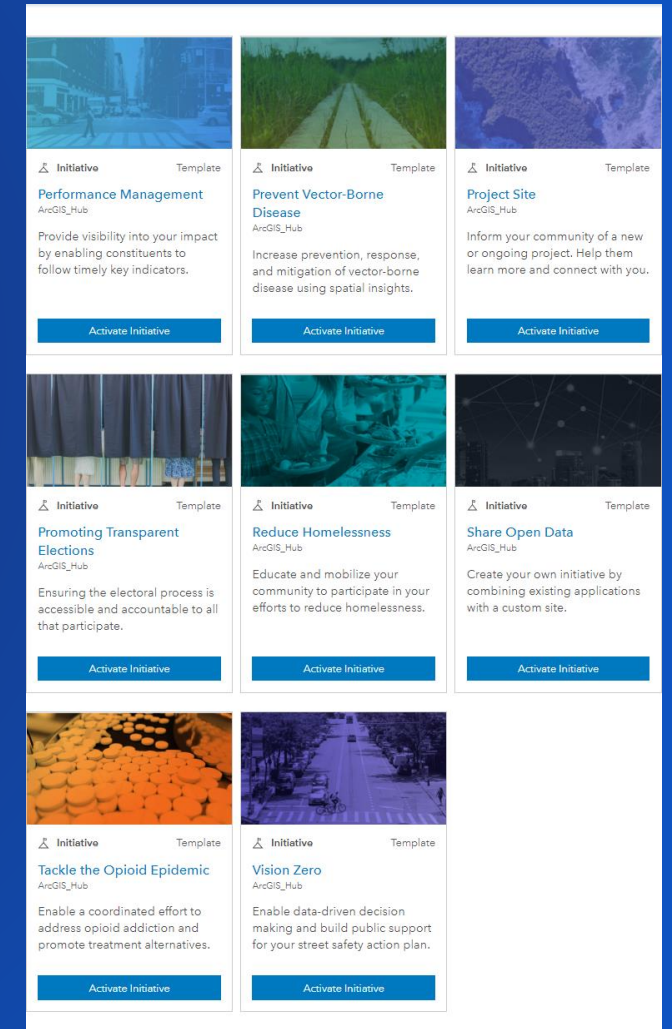
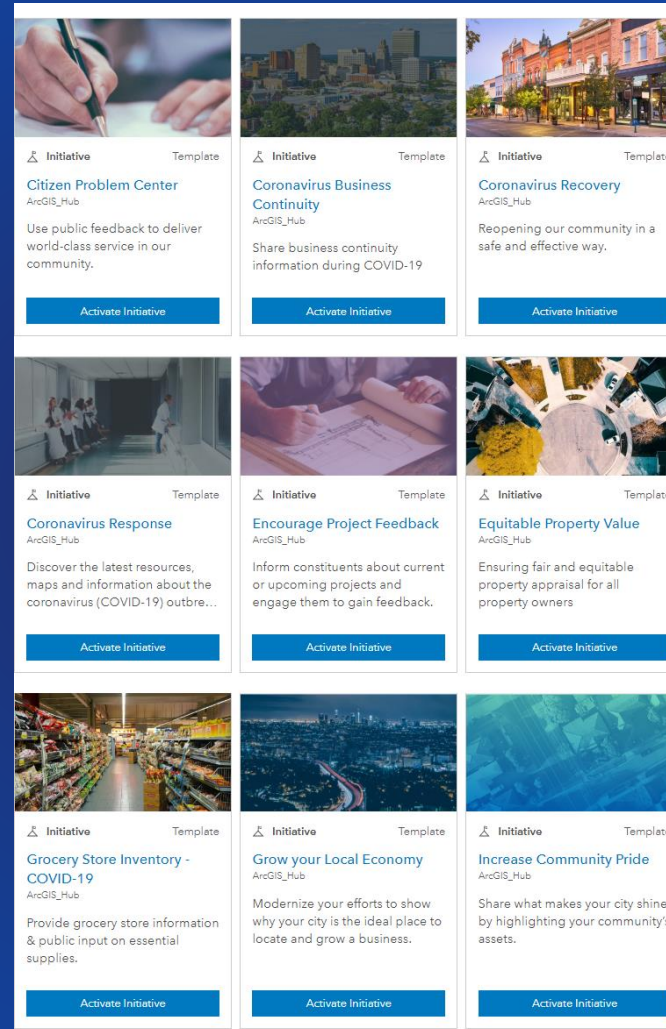
Ways to Engage

Participating Agencies



Ready to Use Initiative Templates

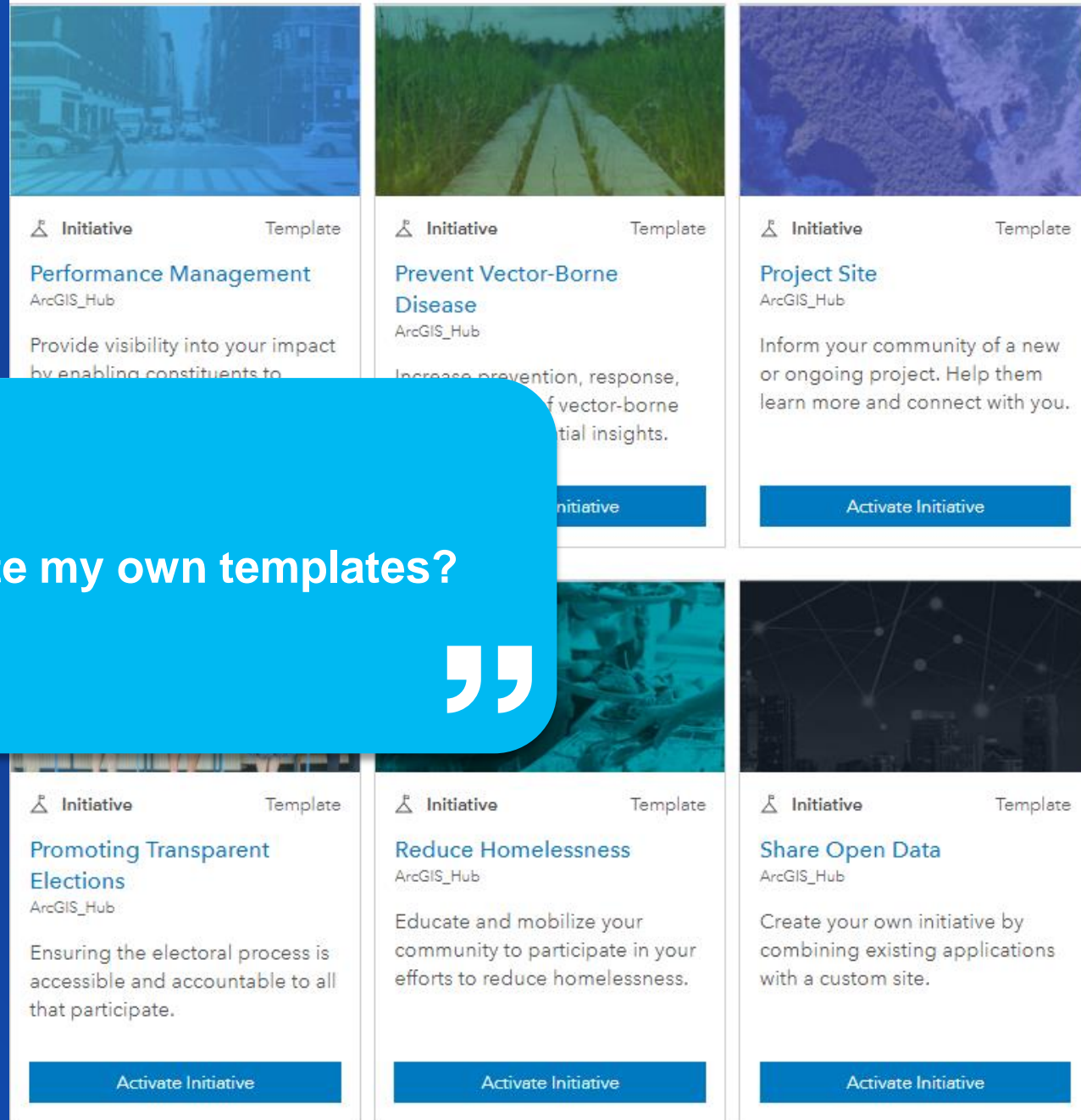
- Citizen Problem Center
- Coronavirus
 - Business Continuity
 - Grocery Store Inventory
 - Recovery
 - Response
- Encourage Project Feedback
- Equitable Property Value
- Grow Your Local Economy
- Increase Community Pride
- Performance Management
- Project Site
- Promoting Transparent Elections
- Prevent Vector-Borne Disease
- Reduce Homelessness
- Share Open Data
- Tackle The Opioid Epidemic
- Vision Zero



“

How can I create my own templates?

”



Initiative Template Publisher

Create and share your own initiative patterns: Esri, customers, partners, researchers

← → ↺ 🏠 🔒 https://hub.arcgis.com/admin/initiatives/te... ☆

ArcGIS Hub Community **Initiatives** Sites Data

Create New Template

You are creating a blank initiative template. Inside this template you maps, sites, and surveys that will help others achieve this initiative. it to a template as you add it to this initiative template.

Title

Name your initiative template

Cancel

Create Initiative Template


Initiatives

Initiatives Manager Gallery

Create New Initiative

Mine

Search...




★

Adopt A Block

Well-Run

Details

Preview




★

ANC SMD

Well-Run

Details

Preview




★

DCPS School Modernization

Prosperous

Details

Preview




★

Disaster Response Event

Safe

Details

Preview




★

RiverSmart Community

Sustainable

Details

Preview



★

RiverSmart School

Well-Run

Details

Preview

NJTPA Local Concept Development Study – Initiative Template



About the Study

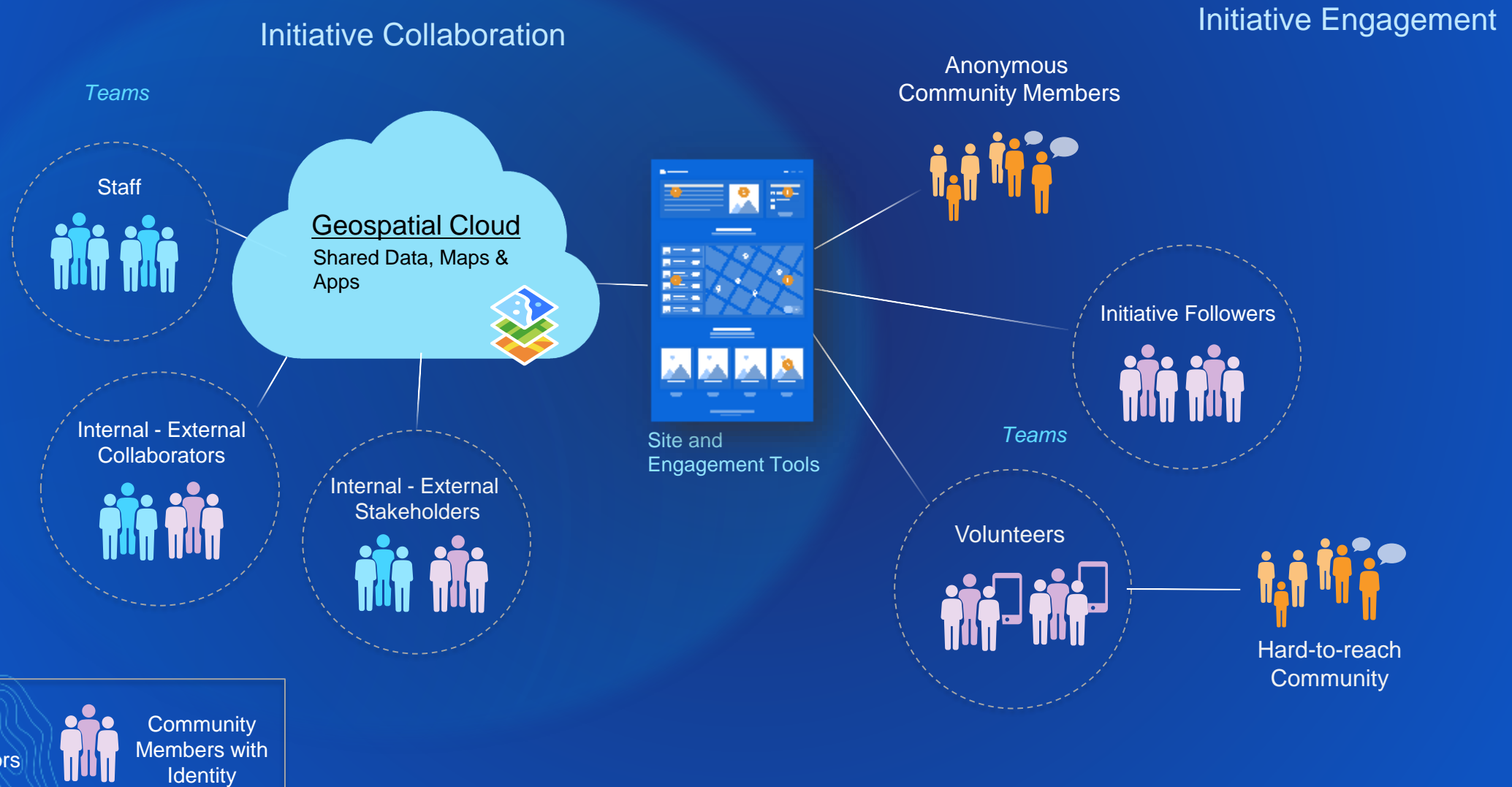
Welcome to the website for the Oradell Avenue Bridge Local Concept Development (LCD) Study.

Bergen County in coordination with the North Jersey Transportation Planning Authority (NJTPA) and the New Jersey Department of Transportation (NJDOT) is conducting a study to determine appropriate improvements to the bridge, which crosses the Hackensack River in the Borough of Oradell. The goals of the study are to address the structural and geometric deficiencies of the bridge, and increase safety for the traveling public.

The Power of Teams

Leverage Trusted Collaborators within the Community

Team-Enabled Collaboration and Engagement Pattern



Team-Enabled Collaboration and Engagement Pattern

Case Study: Maryland DOT Project Portal

Initiative Collaboration

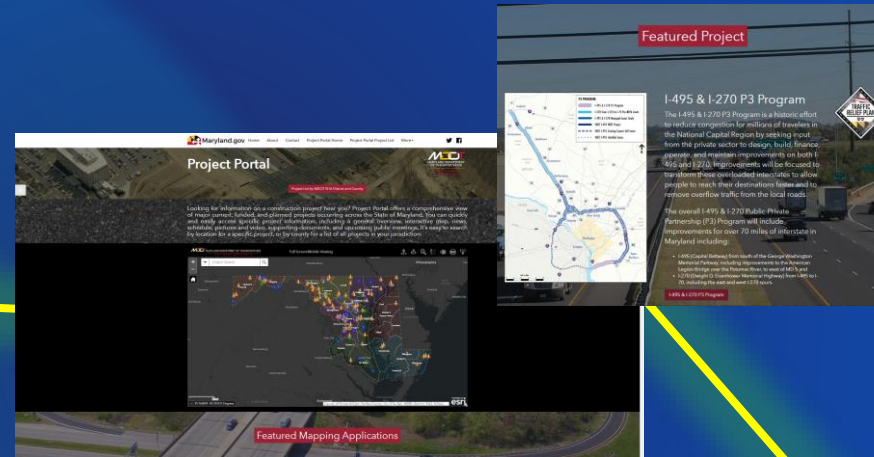
Initiative Engagement

Geospatial Cloud
Shared Data, Maps & Apps

Internal - External
Collaborators



Project Portal Site and
Engagement Tools



General Public

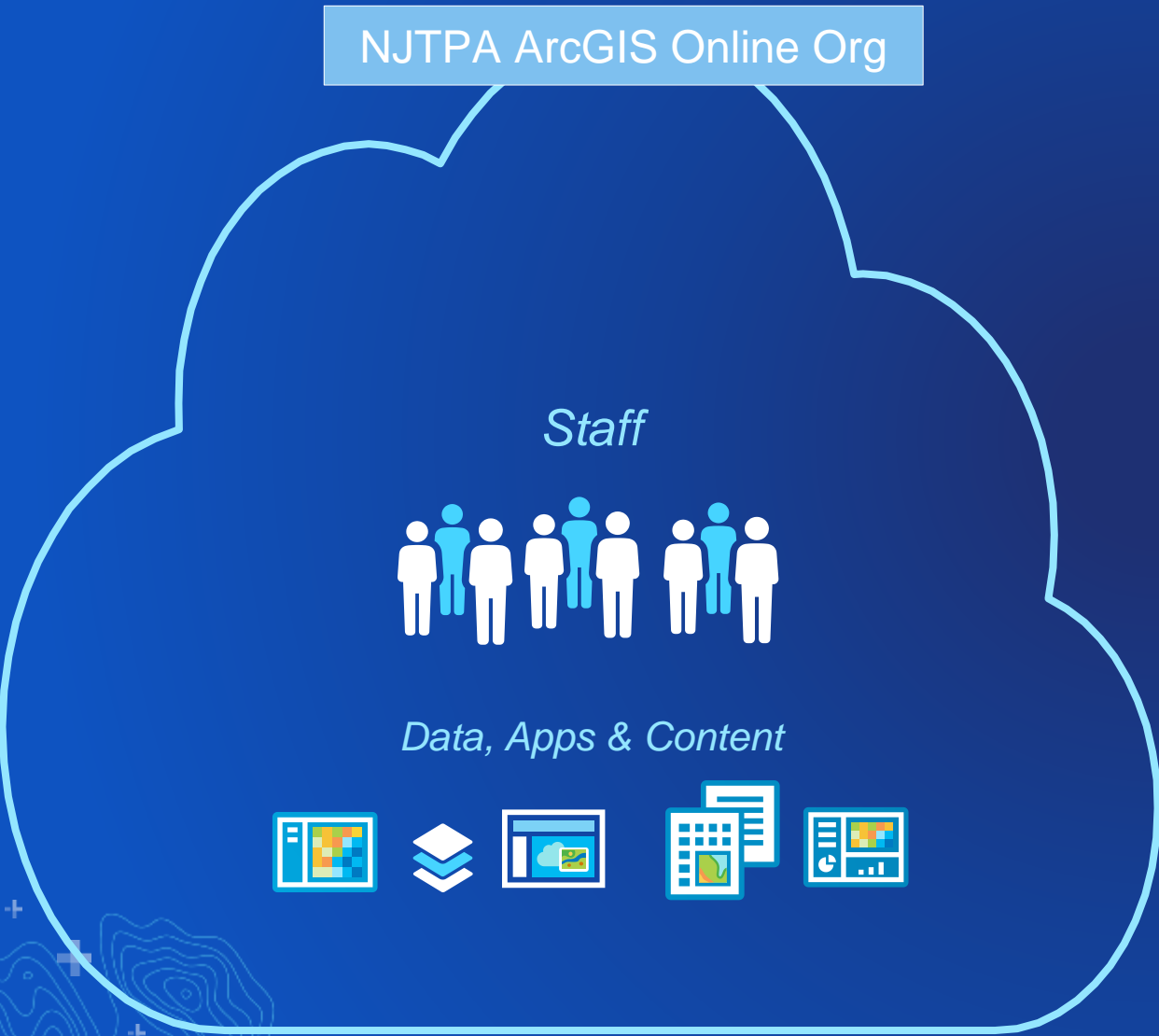


Staff &
Contractors

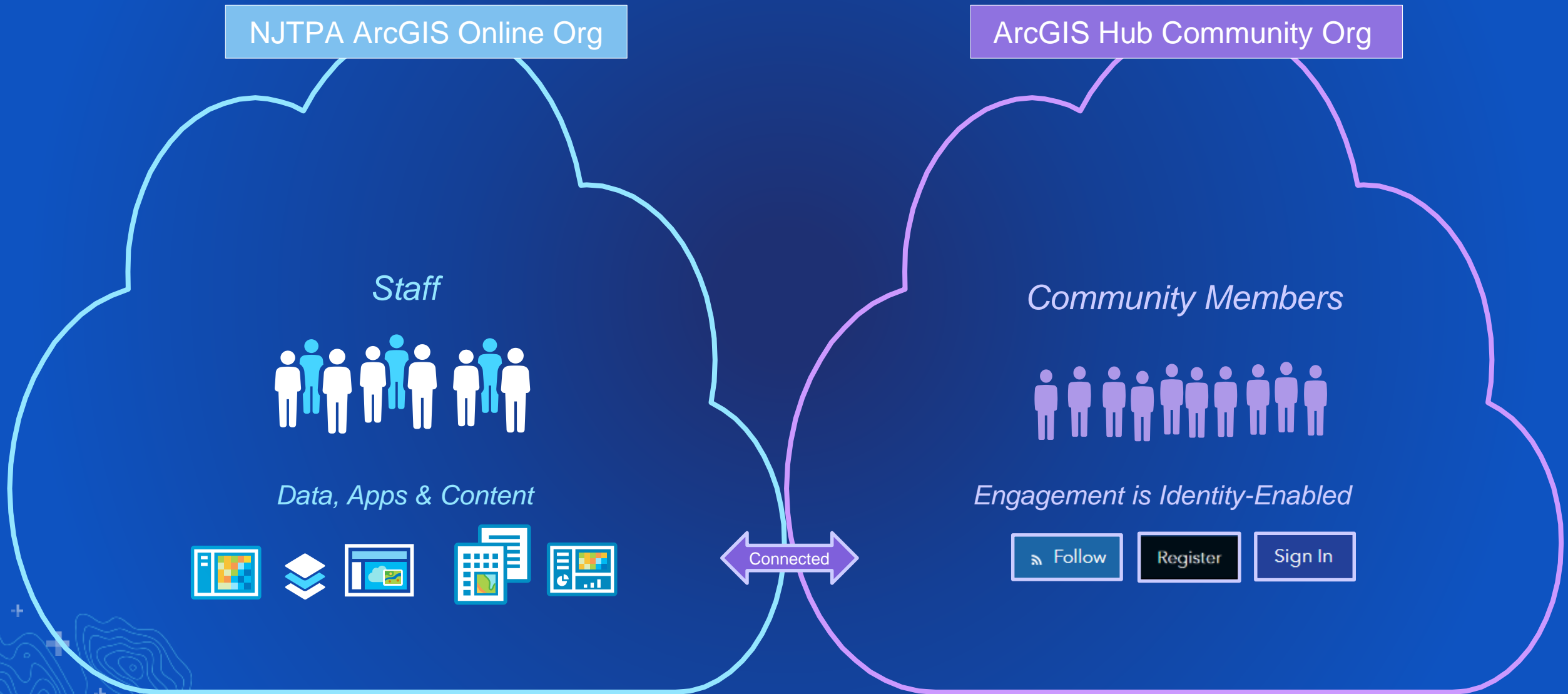


Community
Members with
Identity

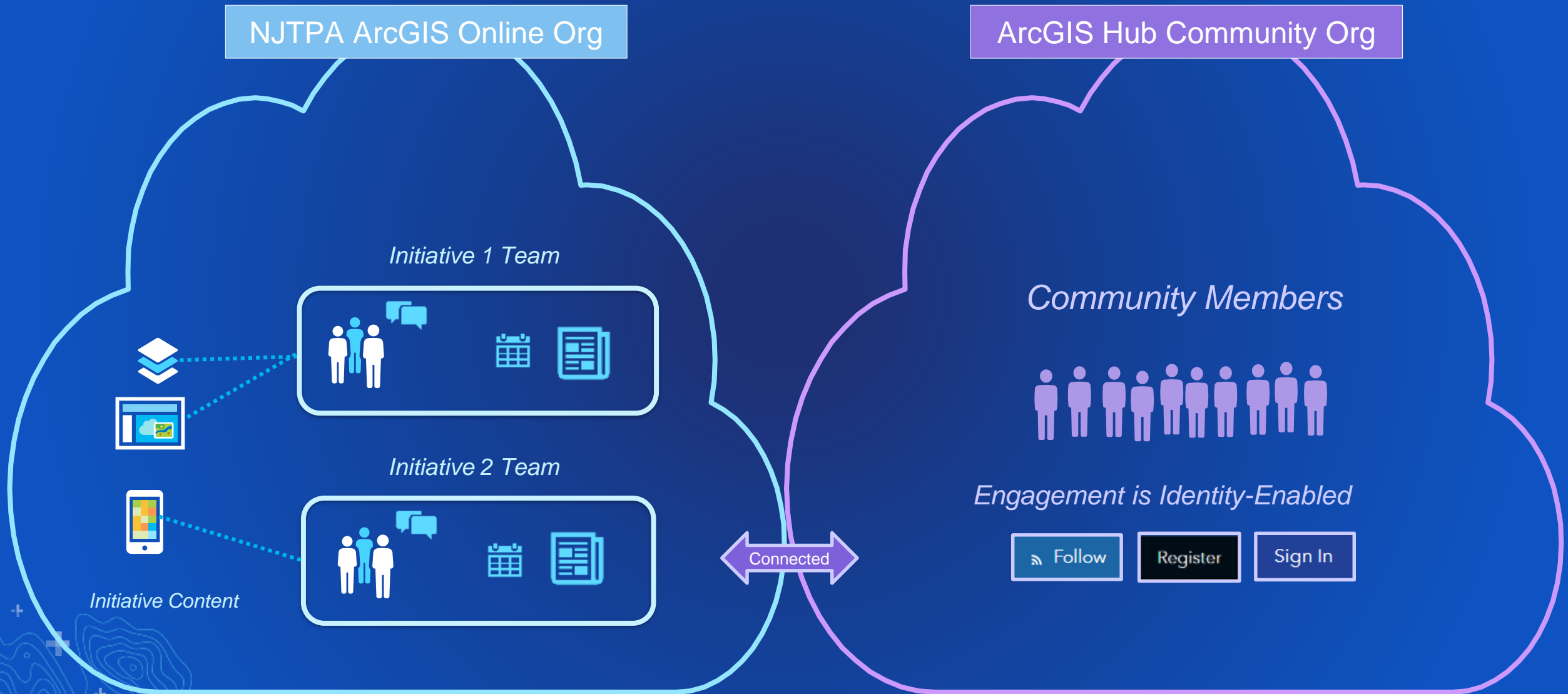
High-Level ArcGIS Hub Premium Architecture and Setup



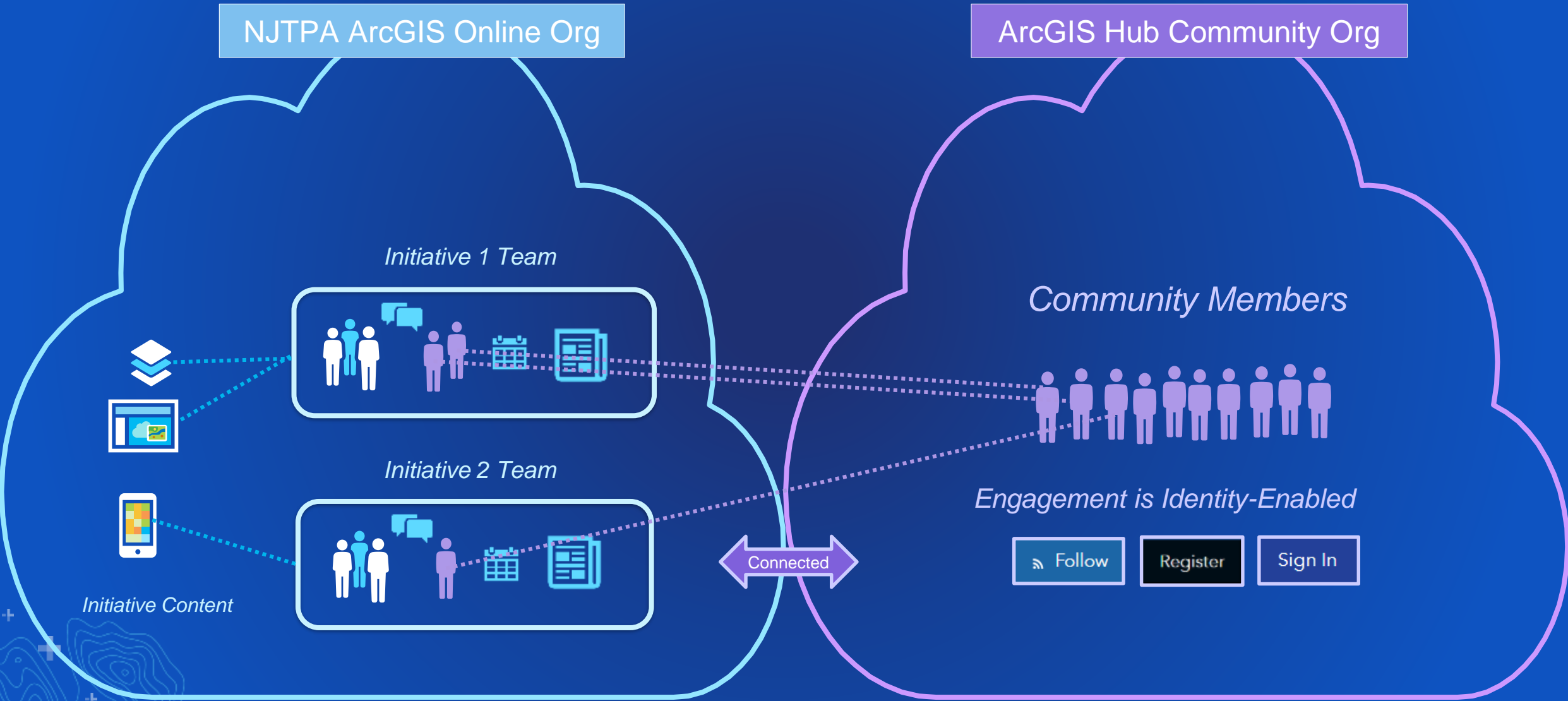
High-Level ArcGIS Hub Premium Architecture and Setup



High-Level ArcGIS Hub Premium Architecture and Setup



High-Level ArcGIS Hub Premium Architecture and Setup



What can community users do?

- Follow or subscribe to initiatives
- Receive notifications
- Register for events
- Sign in to access applications
- Crowdsource data with identity
- Perform analyses
- Create applications
- Work on the initiative site
- Manage events for you





esri

THE
SCIENCE
OF
WHERE