

# Regional Performance Measures

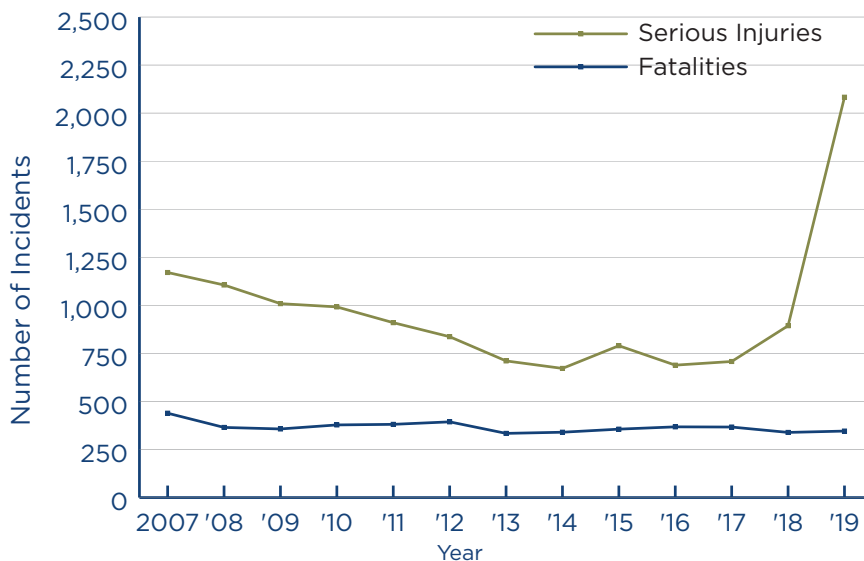
## Safety Performance Measures: How safe are NJTPA roads for all users?

Safety performance measures support the NJTPA's goal to improve overall system safety, reducing serious injuries and fatalities for all travelers on all modes. The measures reported here address fatalities and serious injuries on the roadway system. In addition, transit agencies track and report on several different safety performance measures, but due to the large number of transit measures, these are not reported here.

### Roadway Fatalities and Serious Injuries

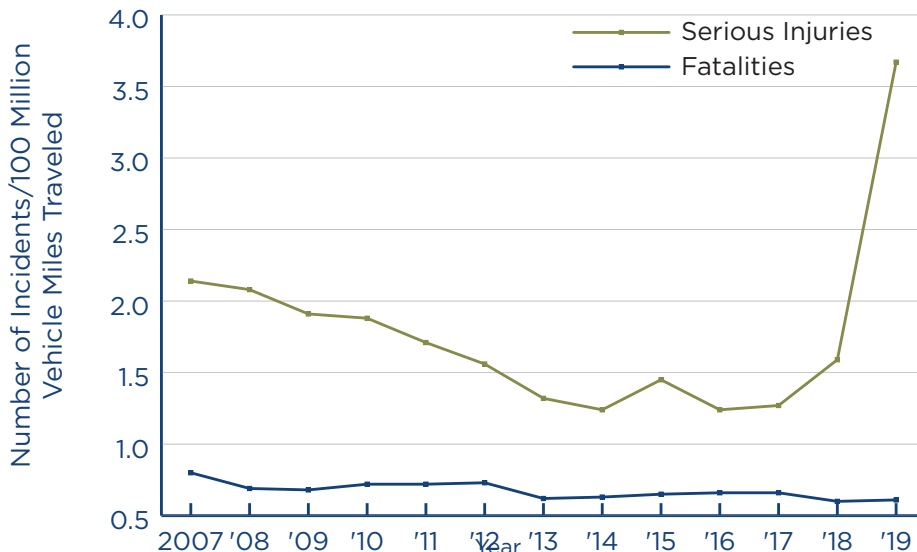
These measures are the same as the Federal performance measures, although annual numbers and rates are shown for the NJTPA region rather than 5-year rolling averages used for the federal measures. NJDOT data on all public roadways in the NJTPA region are used to analyze these measures. "Rate" measures represent fatalities or serious injuries per 100 million vehicle-miles traveled (VMT).

Annual Number of Fatalities and Serious Injuries



\*The injury classification scheme was updated in 2019. As a result, injuries not previously classified as "serious" are now being included in these metrics, and caused a large jump in the number (and rate) of serious injuries from 2018 to 2019.

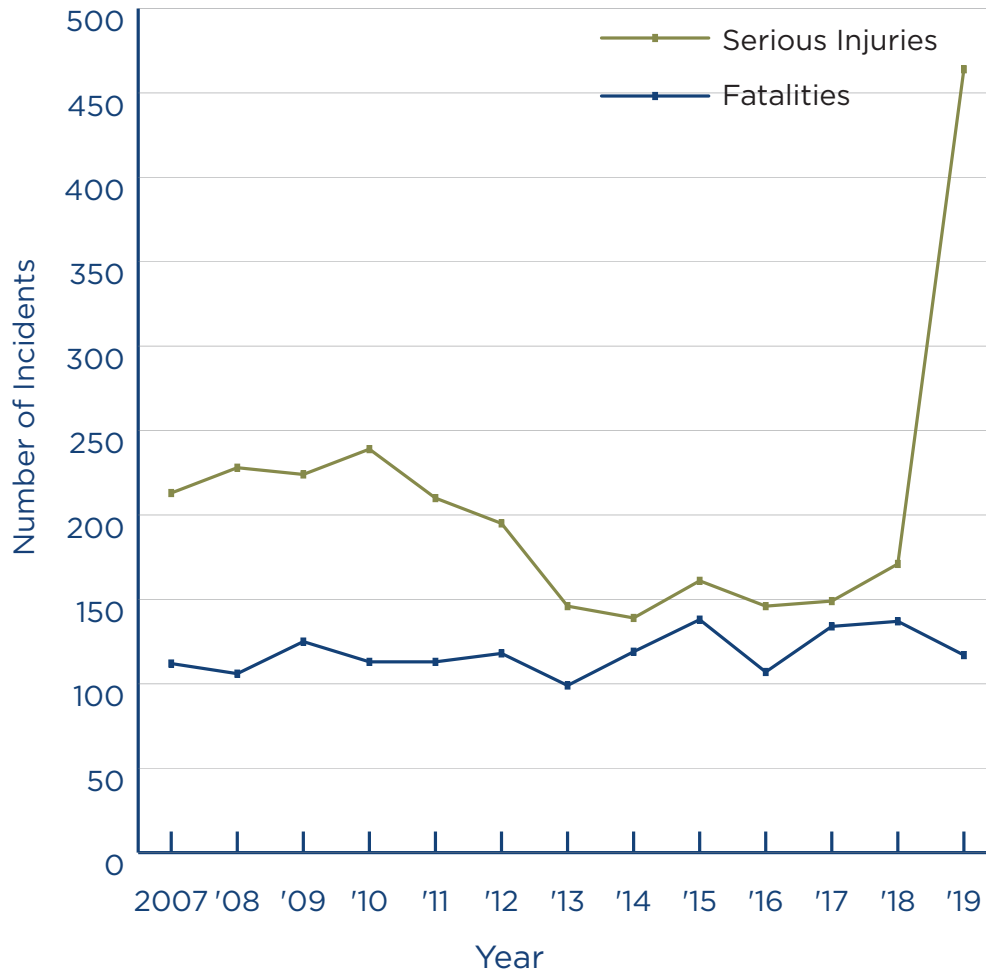
Annual Rate of Fatalities and Serious Injuries (per 100 million VMT)



# Pedestrian and Bicycle Fatalities and Serious Injuries

These measures are the same as the federal performance measures, although annual numbers are shown for the NJTPA region rather than 5-year rolling averages. NJDOT data from police departments on traffic crash reports in the NJTPA region are used to analyze this measure. Rate information is not available because there is not a good estimate of pedestrian or bicycle miles traveled.

Annual Pedestrian/Bicycle Incidents



\*The injury classification scheme was updated in 2019. As a result, injuries not previously classified as “serious” are now being included in these metrics, and caused a large jump in the number of serious injuries from 2018 to 2019.