

# Planning for Emerging Centers Program

## Informational Session

April 6, 2022



Blythe Eaman, Director of Environmental and  
Sustainability Planning

**North Jersey Transportation Planning Authority**

# NJTPA Region

**Bergen**

**Essex**

**Hudson**

**Hunterdon**

**Jersey City**

**Middlesex**

**Monmouth**

**Morris**

**Newark**

**Ocean**

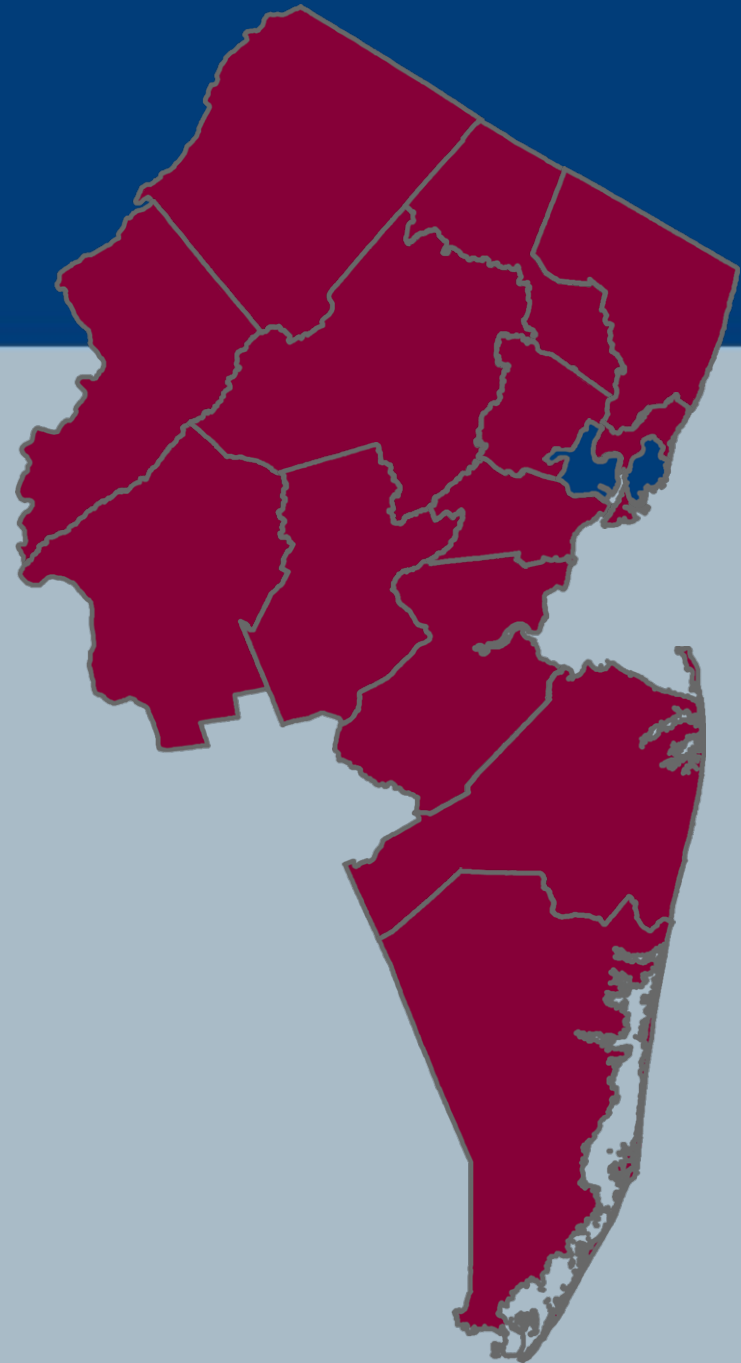
**Passaic**

**Somerset**

**Sussex**

**Union**

**Warren**



# North Jersey Transportation Planning Authority

The Metropolitan Planning Organization for Northern New Jersey



## STANDING COMMITTEES

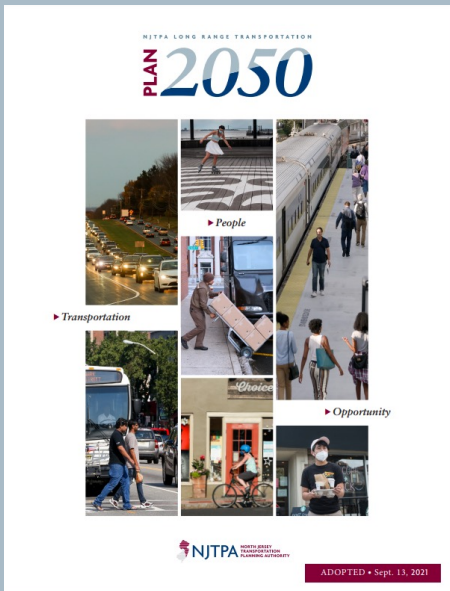
Planning & Economic Development Committee

Project Prioritization Committee

Freight Initiatives Committee

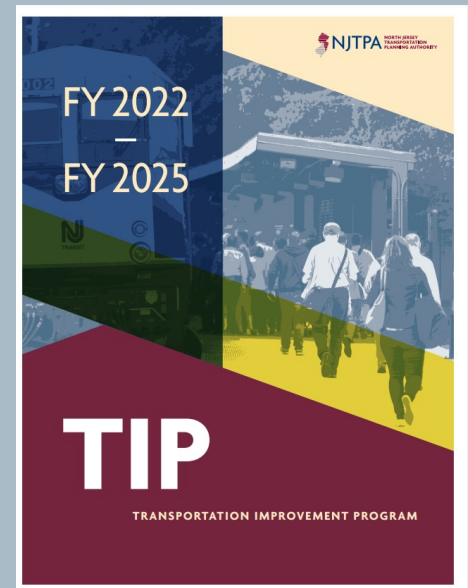
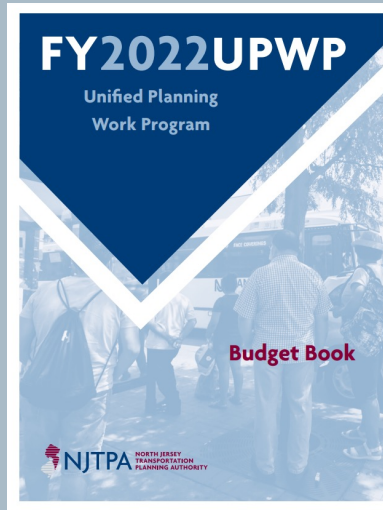
Regional Transportation Advisory Committee

# Key Products



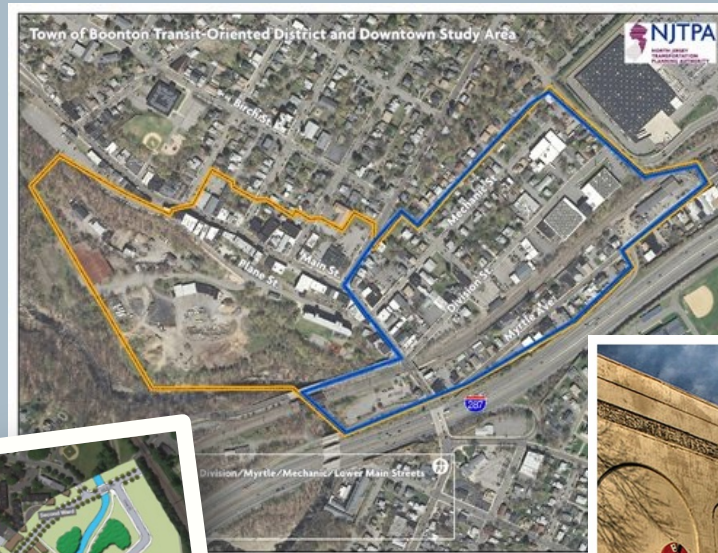
**Long Range  
Transportation  
Plan (LRTP)**  
*Updated every four  
years*

## Planning



**Transportation  
Improvement  
Program (TIP)**  
*Updated every  
other year*

# Program Background: Previous Studies



**Planning for Emerging Centers Program**  
Municipal Transit-Oriented Development Assistance Planning

# Current Solicitation

- Technical assistance to municipalities for planning studies that advance sustainable transportation and land use planning.
- Competitive program
- Technical assistance is provided via a consultant retained and managed by the NJTPA.

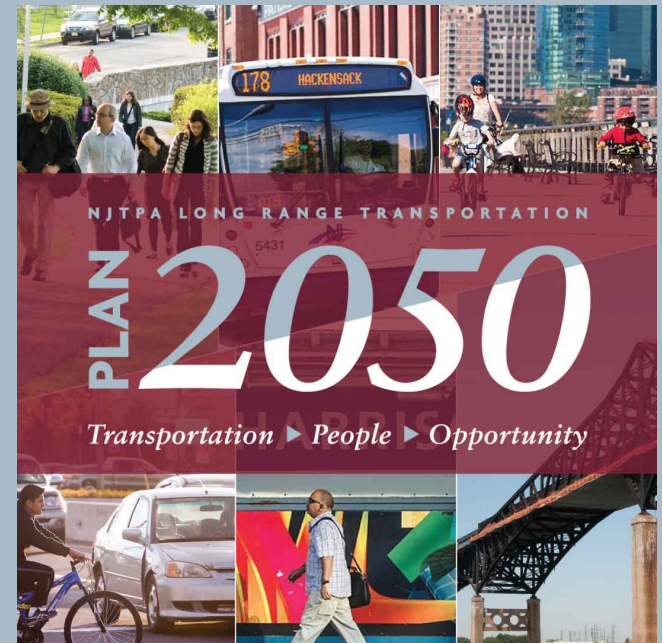
# Current Solicitation

- Consultants and counties are ineligible
- Planning activities must be completed within 15 months
- Municipalities are required to dedicate in-kind staff time and any resources. *No financial match is required.*
- U.S. DOT-funded program. Participants must comply with all applicable federal regulations and contracting provisions required by federal funding authority (2 CFR Part 200)

# Advancing Regional Goals

Applicants must consider regional goals when developing proposals

- Long Range Transportation Plan (required). Examples:
  - Improving safety for all travelers
  - Providing accessible and affordable transportation
  - Retaining and increasing economic activity and competitiveness



[NJTPA.org/Plan2050](http://NJTPA.org/Plan2050)



# Eligibility

Municipalities are eligible if:

- Nominated by the NJTPA member host county
  - Municipalities (except Newark and Jersey City) must provide a letter of support from their host county
- Provide staff support necessary for a successful study
- Submit studies that meet the eligible planning activities

# Eligible Activities

Eligible planning activities include:

- Integrated Land Use/Mobility Plans
- Transit Area and Transit Supportive Planning
- Complete Streets Policy and Implementation Plans

# Evaluation Criteria

- Demonstration of a Regional Need
- Innovation, Partnerships and Equity
- Methodology/Clarity of Approach and Product Deliverables
- Potential for Future Implementation

# NJTPA Responsibilities

- Retains and manages consultant in collaboration with municipality
- Reviews consultant invoices, progress of planning study
- Attends all technical advisory committee, stakeholder and public meetings
- Reviews all consultant deliverables, including tech memos, presentations, draft and final reports

# Municipal Responsibilities

- Assists the NJTPA and consultant with data collection and analysis
- Coordinates public and stakeholder outreach
- Reviews project deliverables
- Assists the NJTPA in project management
- Guides municipal approval of the study findings

# How to Respond

Deadline for Proposals:

**Monday, May 16, 2022, at 4 p.m. sharp**

- Proposal must include:
  - Project Overview
  - Project Description
  - Regional Impact
  - Project Partnerships

# Selected Municipalities: Next Steps

- Resolution of participation from municipal governing body
- NJTPA and municipal staff develop scope of work and RFP
- NJTPA undertakes procurement of consultant services (municipal representation on selection committee)
- NJTPA awards contract to consultant – kick off meeting launches project

# Solicitation Inquiries

- Follow-up questions must be submitted in writing to [beaman@njtpa.org](mailto:beaman@njtpa.org) and [jperlman@njtpa.org](mailto:jperlman@njtpa.org)
- Questions and answers, including those from today's meeting, will be posted on the NJTPA website ([NJTPA.org/PEC](http://NJTPA.org/PEC))
- Inquiries received after **April 13, 2022 at 2 p.m.** may not be reviewed or considered



# Questions?



Please post your questions in the meeting chat window

# Thank You!

*Defining the Vision. Shaping the Future.*



Blythe Eaman, AICP  
[beaman@njtpa.org](mailto:beaman@njtpa.org)  
[www.njtpa.org](http://www.njtpa.org)



Find us on  
**Facebook!**

follow us on

**twitter** 



Find Us On  
**Instagram**

You  
Tube

**SUBSCRIBE**  
TO OUR CHANNEL