



U.S. Department of Transportation  
Federal Highway Administration



# Local Road Safety Plans Webinar 2

New Jersey  
September 28, 2023



DISCLAIMER: The contents of this presentation do not have the force and effect of law and are not meant to bind the public in any way. This presentation is intended only to provide information to the public regarding existing requirements under the law or agency policies. Unless noted otherwise, FHWA is the source for all images in this presentation.

1



Office of Innovation Implementation

U.S. Department of Transportation  
Federal Highway Administration



2

2

# Safety Data

- Introduction to Safety Data (Emphasis Areas and Crash Trees)
- Numeric Safety Analysis Tool
- Safety Voyager
- SHSP Data Viewer and NJTPA Network Screening List
- FHWA Climate and Economic Justice Screening Tool
- Wrap-up and Questions

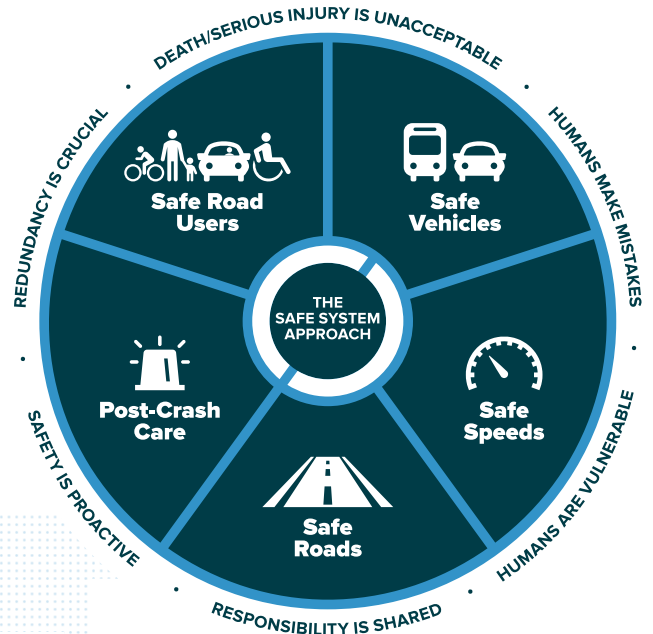
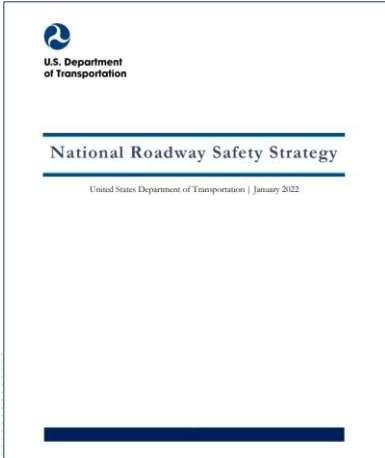
3

# Safety Data & Risks

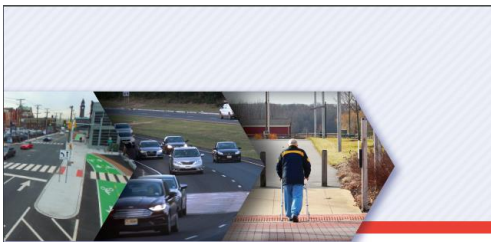


4

# National Roadway Safety Strategy



<https://www.transportation.gov/nrssl/usdot-national-roadway-safety-strategy>



## NEW JERSEY 2020 Strategic Highway Safety Plan



August 2020



<https://www.state.nj.us/transportation/about/safety/sshsp.shtm>  
Office of Innovation Implementation

### • Emphasis Areas

- Equity
- Lane Departure
- Intersections
- Driver Behavior
- Pedestrian and Bicyclists
- Other Vulnerable Road Users
- Data

U.S. Department of Transportation  
Federal Highway Administration



# Crash Summaries and Comparisons

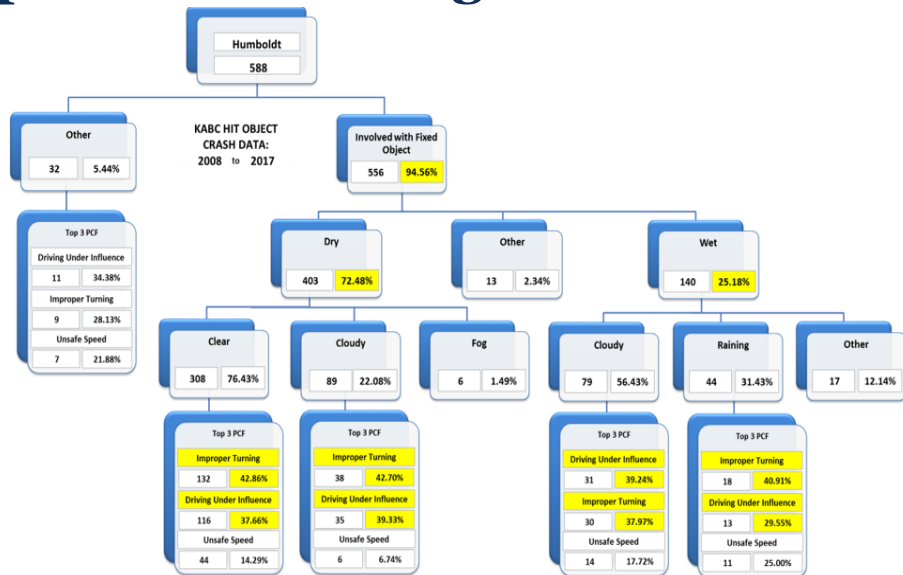
2013-2017 County X Data	Fatal/Serious Injury Crashes Only						Total Crashes									
	All Roads		All Co		West Co		County X		All Roads		All Co		West Co		County X	
	2013-2017	%	2013-2017	%	2013-2017	%	2013-2017	%	2013-2017	%	2013-2017	%	2013-2017	%	2013-2017	%
<b>Overall Numbers</b>																
Total # of Collisions	11,313		2,674		1,921		50		568,078		71,219		54,108		1,314	
# of Fatal Collisions	3,402	21.2%	654	24.5%	419	21.8%	12	24.0%	2,402	0.4%	654	0.9%	419	0.8%	12	0.9%
# of Serious Injury Collisions	8,911	78.8%	2,020	75.5%	1,502	78.2%	38	76.0%	8,911	1.6%	2,020	2.8%	1,502	2.8%	38	2.9%
# of Alcohol-Related Collisions	2,482	21.9%	706	26.4%	476	24.8%	17	34.0%	35,326	6.2%	7,046	9.9%	5,201	9.6%	156	11.9%
Total # of Fatalities	2,587		702		441		13		2,587		702		441		13	
Total # of Injuries	15,651		3,552		2,583		71		239,597		32,982		25,431		558	
<b>By Collision Type</b>																
Hit Fixed Object	3,192	28.2%	1,164	43.5%	825	42.9%	23	46.0%	104,511	18.4%	28,093	39.4%	19,783	36.6%	725	55.2%
Angle (T)	1,311	11.6%	282	10.5%	197	10.3%	8	16.0%	95,003	16.7%	11,051	15.5%	9,066	16.8%	133	10.1%
Overturn	849	7.5%	273	10.2%	144	7.5%	4	8.0%	11,157	2.0%	3,422	4.8%	1,629	3.0%	40	3.0%
Head On	590	5.2%	160	6.0%	123	6.4%	4	8.0%	2,922	0.5%	778	1.1%	595	1.1%	11	0.8%
Hit Cyclist	628	5.6%	87	3.3%	73	3.8%	4	8.0%	6,876	1.2%	544	0.8%	489	0.9%	8	0.6%
Angle (Left Turn)	686	6.1%	124	4.6%	102	5.3%	2	4.0%	33,840	6.0%	3,522	4.9%	3,117	5.8%	34	2.6%
Wildlife	102	0.9%	47	1.8%	26	1.4%	1	2.0%	10,607	1.9%	1,940	2.7%	1,083	2.0%	137	10.4%
Rear-end	848	7.5%	94	3.5%	72	3.7%	1	2.0%	172,555	30.4%	11,374	16.0%	10,084	18.6%	107	8.1%
Sideswipe (Same Direction)	363	3.2%	65	2.4%	53	2.8%	0	0.0%	60,341	10.6%	3,652	5.1%	2,888	5.3%	38	2.9%
Sideswipe (Opposite Direction)	157	1.4%	39	1.5%	30	1.6%	0	0.0%	3,666	0.6%	1,005	1.4%	760	1.4%	12	0.9%
Hit Pedestrian	1,832	16.2%	194	7.3%	163	8.5%	0	0.0%	9,829	1.7%	759	1.1%	663	1.2%	4	0.3%
Other	568	5.0%	122	4.6%	95	4.9%	2	4.0%	24,252	4.3%	2,619	3.7%	1,951	3.6%	35	2.7%
<b>By Roadway Surface</b>																
Dry	8,359	73.9%	1,976	73.9%	1,354	70.5%	32	64.0%	581,190	67.1%	44,865	63.0%	33,207	61.4%	809	61.6%
Wet	2,428	21.5%	544	20.3%	488	25.3%	15	30.0%	149,957	26.4%	18,483	26.0%	17,076	31.6%	347	26.4%
Ice	224	2.0%	76	2.8%	39	2.0%	3	6.0%	15,324	2.7%	4,874	6.8%	2,369	4.4%	107	8.1%
Snow / Slush	130	1.1%	24	0.9%	14	0.7%	0	0.0%	11,848	2.1%	1,745	2.5%	663	1.2%	20	1.5%

Office of Innovation Implementation

U.S. Department of Transportation  
Federal Highway Administration

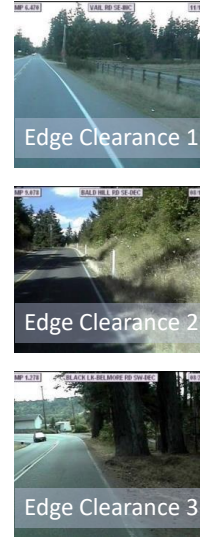
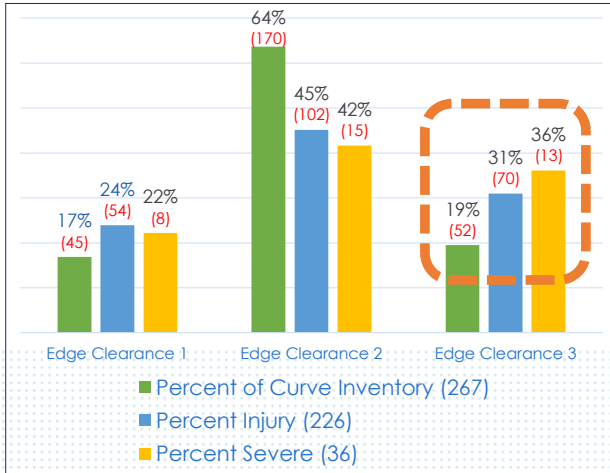


# Develop Crash Tree Diagrams

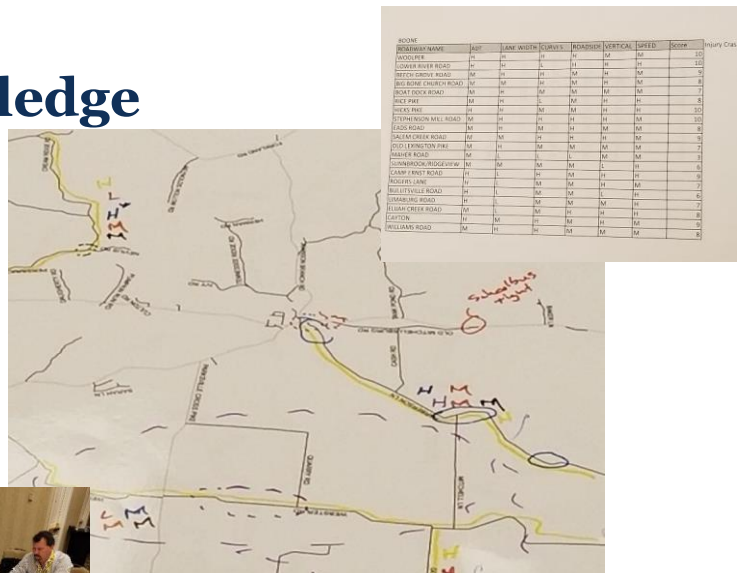


Office of Innovation Implementation

# Examples of Potential Risk Factors, Roadway Features and Crashes



# Local Knowledge



# Local Road Safety Plans DIY Website

**LOCAL ROAD SAFETY PLANS:**  
Your Map to Safer Roadways

Step 1 Identify Stakeholders | Step 2 Use Safety Data | Step 3 Choose Proven Solutions | Step 4 Implement Solutions | Finish Line

Your local road safety plan should be data driven as much as possible. Don't have great data? No worries, everyone has some data and you can always get more as you go. Use the resources on this page to help you discover and use the data you have. Remember, do what you can, with what you have, where you are!

SCROLL DOWN FOR MORE VIDEOS

Local Agency Insights: Use Safety Data

**LOCAL ROAD SAFETY PLANS:**  
Your Map to Safer Roadways

USE SAFETY DATA  
"How are other local agencies using data?"

Systemic Analysis

**Systemic Analysis**

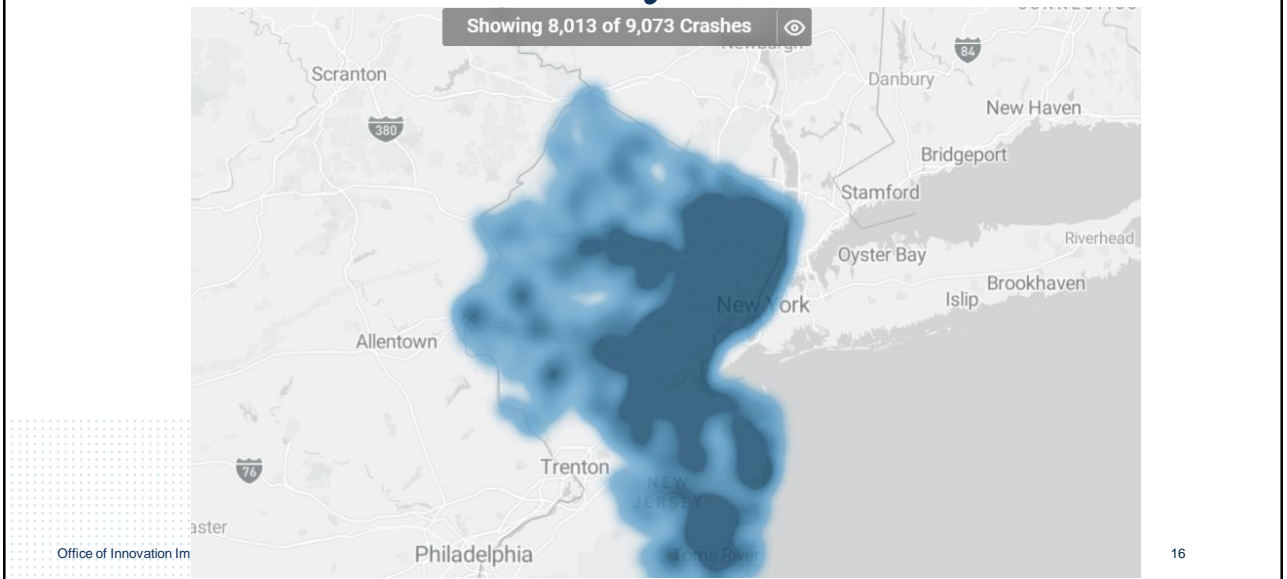
**Tools and Resources**  
Content will open in a new window

Guides | Systemic Tools | Training | Helpful Links

<https://safety.fhwa.dot.gov/LRSPDIY/safety-data.cfm>

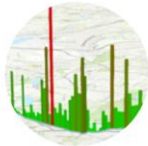
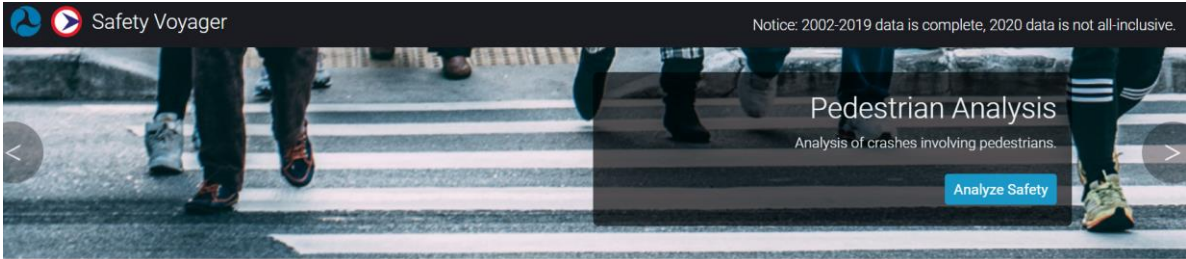
15

# NJDHTS Crash Analysis Tool - Numetric



16

# Safety Voyager



## Crash Map beta!

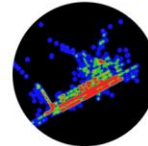
Interactively select and filter crash data.

[View Map »](#)



## Pedestrian Dashboard

Instant synthesis of pedestrian and bicyclist

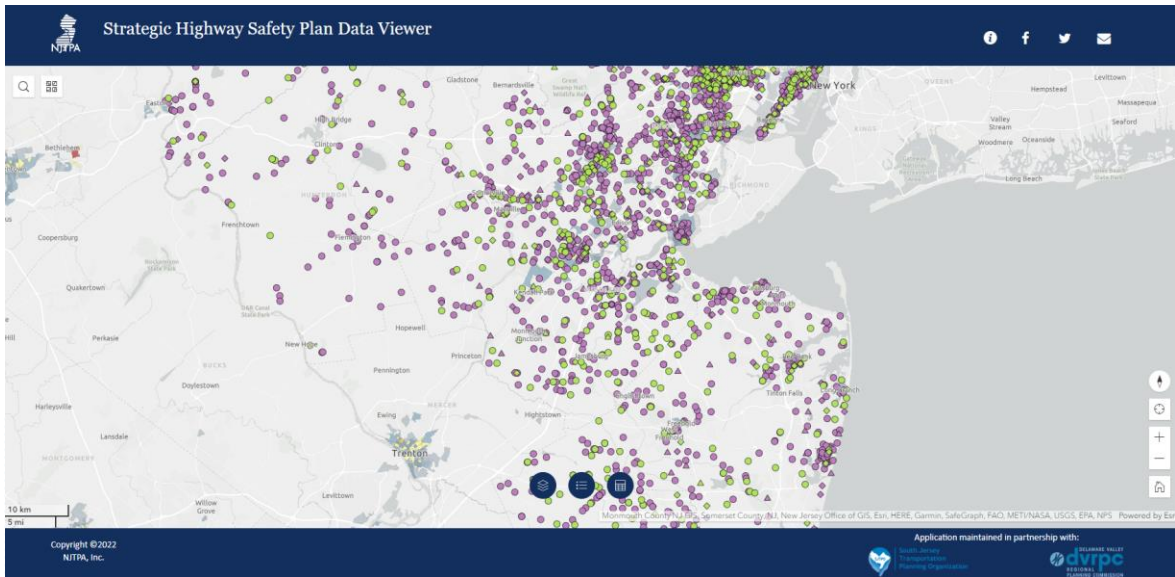


## Pedestrian Heatmap

Dynamic map based visualization of crashes involving pedestrians and bicyclists.

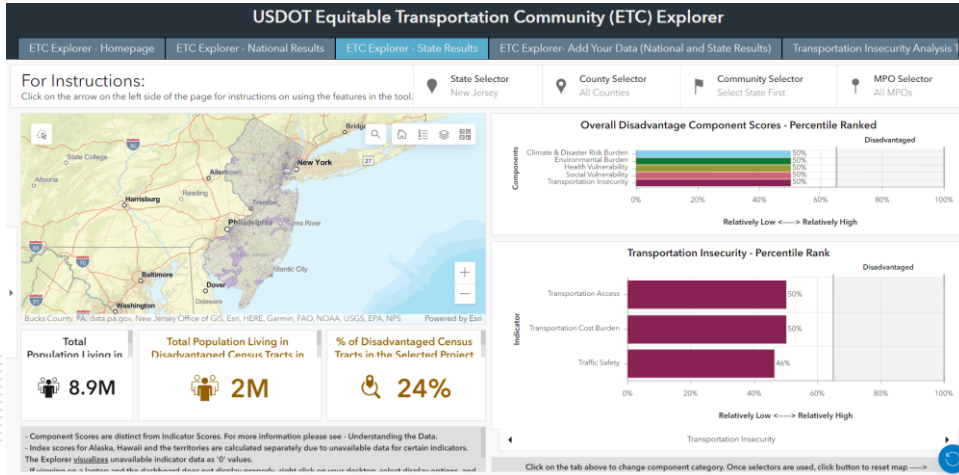
17

# SHSP Data Viewer



18

# USDOT Equitable Transportation Community Explorer (ETCE)

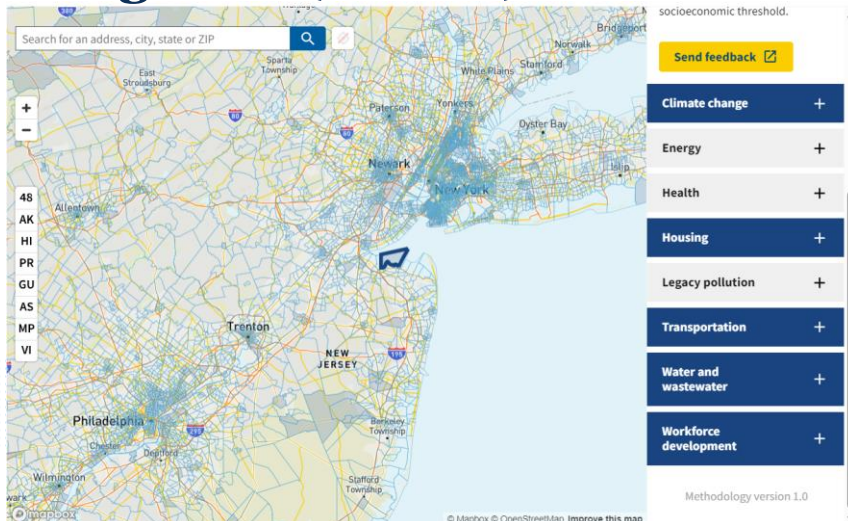


<https://experience.arcgis.com/experience/0920984aa80a4362b8778d779b090723/>

19

19

# Climate and Economic Justice Screening Tool (CEJST)



20

20



“Do what you can,  
with what you have,  
where you are.”  
– Theodore Roosevelt

21



22



U.S. Department of Transportation  
Federal Highway Administration



## FHWA Resource Center

Derek Troyer, P.E.

(202) 510-7996

[Derek.Troyer@dot.gov](mailto:Derek.Troyer@dot.gov)

