

## Essex County

### Analysis Inputs

Almost all of Essex County has high bicycle trip potential, with particularly high pockets of demand in downtown Newark and the Ironbound neighborhood, as well as Nutley Township, Bloomfield Township, Belleville Township, and many other communities in the eastern half of the county, where scores above 90 are prevalent. With the exception of some low-scoring pockets in Short Hills and Fairfield Township (home to Great Piece Meadows) in the west and Port Newark and Newark Liberty International Airport in the east, the entire county scores above 70 on overall bike trip potential.

High-crash intersections and corridors from the Network Screening Analysis are concentrated in Newark and surrounding communities, such as Bloomfield Township and Irvington Township. This finding corresponds with the City of Newark's goal to implement low-cost, high-impact safety improvement efforts at high-crash locations identified in its Pedestrian and Bicycle Safety Action Plan. The regional network overlaps with all Network Screening Analysis crash locations.

Table 3 shows the most predominant EJ populations in Essex County by census block. Overburdened community census block groups in Essex County are evenly split between minority populations and low-income/minority populations. Almost all of Newark consists of the latter category, with minority only populations distributed more broadly across the county. There are also several pockets of low-income/minority/limited English populations in Downtown Newark. The regional network connects to most of these communities.

**Table 3: Overburdened Communities in Essex County**

OBC Category	Number of census blocks
Low Income	4
Low Income and Limited English	1
Low Income and Minority	244
Low Income, Minority, and Limited English	23
Minority	224
Minority and Limited English	5

### Public Feedback

Several webmap comments noted the lack of bicycle connections between Newark and suburban communities to the west, specifically Montclair Township, West Orange Township, and Verona Township. Others focused on connections to neighboring counties and communities. For example, one comment highlighted the need to build active transportation routes between Newark and Jersey City. Others promoted the idea of a trail along the Passaic River connecting Bergen County to Newark, which could benefit large populations of urban travelers with a safe route between regional activity centers. Many comments also focused on Newark's disconnected bicycle and pedestrian network and the need for local improvements as well. The regional network addresses many of these concerns, including the Essex Hudson Greenway that links to Jersey City, and many proposed routes in Newark and throughout the rest of the county.

### Existing Network and Proposed Improvements

There are several regional trails in Essex County. These include the Liberty-Water Gap Trail, which begins in West Orange and continues into Morris County, and the Lenape Trail, which travels through northern Newark and into neighboring communities. The regional network would build upon these trails, adding east-west routes that

parallel the Liberty-Water Gap Trail and connect more communities in the western part of the county, as well as alternative routes to the Lenape Trail. These additions to the current bicycle network would connect almost all of Essex County's communities. The regional network and its half-mile buffer cover most of Newark as well, which would significantly expand connectivity in the region's largest city and create many more options for people bicycling than the city's existing infrastructure.

The regional network overlaps with all NJ TRANSIT commuter and light rail lines in Essex County and most stations:

- North Jersey Coast Line: Newark Airport
- Newark to Grove Street: Military Park, Washington Street, Warren Street, Norfolk Street, Orange Street, Park Avenue, Bloomfield Avenue, Davenport Avenue, Silver Lake, Grove Street
- Newark to Broad St: NJPAC/Center Street, Washington Park, Broad Street
- Gladstone Branch: Newark Broad Street, East Orange, Brick Church, Orange, Highland Avenue, Mountain Station, South Orange, Maplewood, Millburn
- Montclair-Boonton Line: Watsessing, Bloomfield, Glen Ridge, Bay Street-Montclair, Walnut Street, Watchung Avenue, Montclair Heights

This overlap provides a strong opportunity to improve first- and last-mile connections from transit stations to population centers both within Essex County and neighboring counties.

Table 4 lists all roads in Essex County's regional network. It includes road name, municipality, and length of each segment. Network segments that are less than 0.25 miles in length are not listed. Many network segments are on high-volume state highway corridors; as such they are not presently conducive to active transportation. However, walk/bike potential does exist in these areas, and more suitable parallel routing could be explored, such as sidepaths, trails, and other separated facilities, as well as improved transit service for longer distance connections. Local roads that parallel the regional network may also be used as alternate low-stress routes during network implementation.

**Table 4: Essex County Regional Network Corridors**

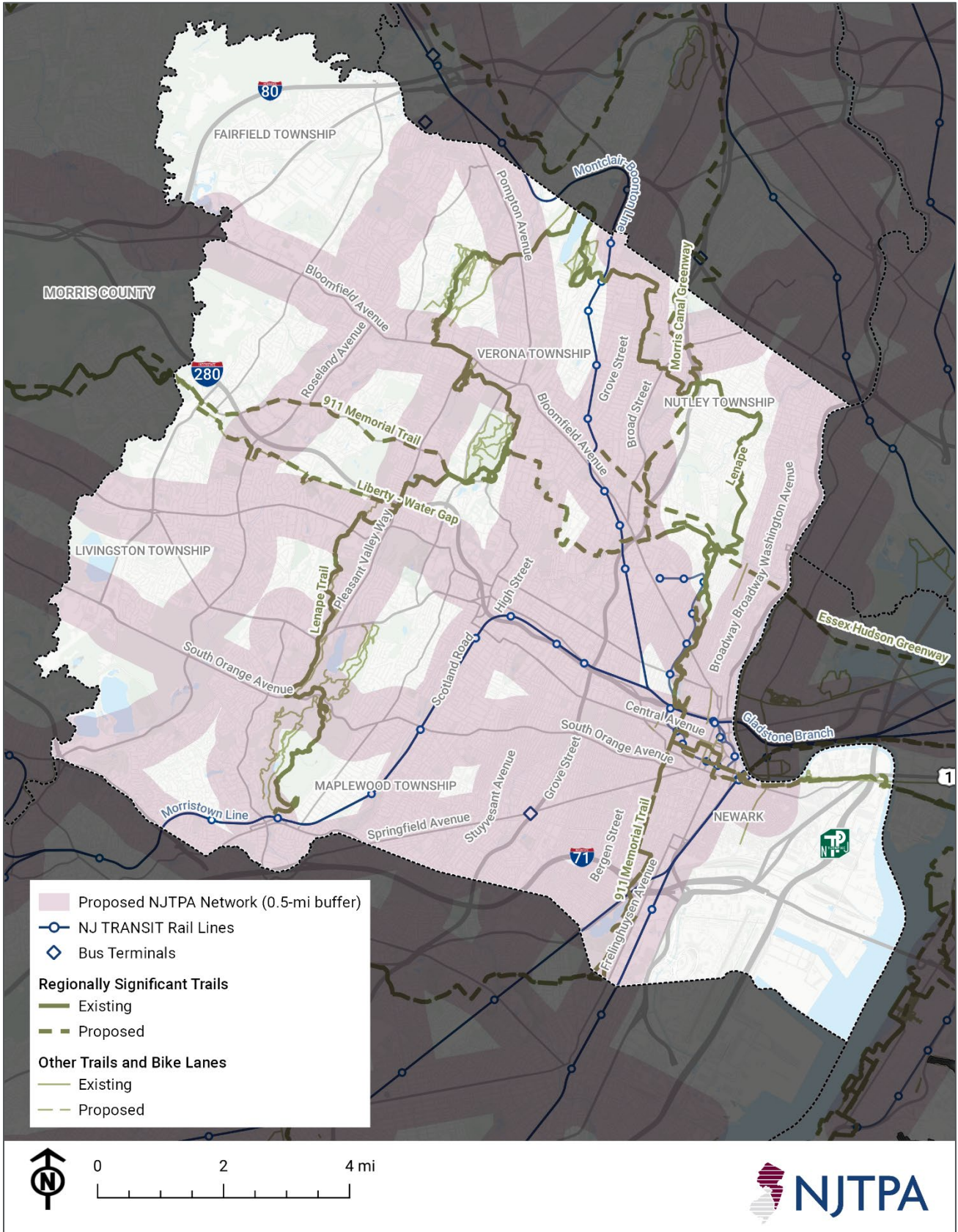
<b>Road Name</b>	<b>County/NJ/US Route</b>	<b>Municipality</b>	<b>Start Point</b>	<b>End Point</b>	<b>Length (Miles)</b>
<b>Roseland Avenue</b>	CR 527	Borough of Essex Fells	Bloomfield Avenue	Eagle Rock Avenue	1.62
<b>Grandview Avenue</b>	CR 631	Borough of North Caldwell	Central Avenue	Little Falls Road, Main Street	1.25
<b>N/A</b>	N/A	Borough of Roseland	North Livingston Avenue	North Livingston Avenue	0.82
<b>Central Avenue</b>	CR 508	City of East Orange	N/A	N/A	4.06
<b>North Grove Street</b>	CR 509	City of East Orange	Grove Street	Dr. Martin Luther King Jr. Boulevard, South Grove Street	1.21
<b>Washington Street</b>	N/A	City of East Orange	North Harrison Street, William Street	Park Avenue	0.41
<b>South Grove Street</b>	CR 509	City of East Orange	Dr. Martin Luther King Jr. Boulevard, North Grove Street	Grove Street	0.65
<b>South Harrison Street</b>	N/A	City of East Orange	Dr. Martin Luther King Jr. Boulevard, North Harrison Street	Central Avenue	0.48
<b>Glenwood Avenue</b>	N/A	City of East Orange	Washington Street	Bloomfield Avenue, Broad Street	1.91
<b>South Orange Avenue</b>	CR 510, CR 577	City of Newark	N/A	N/A	11.31
<b>Clinton Avenue</b>	N/A	City of Newark	N/A	N/A	2.72
<b>Broadway</b>	CR 506 Spur, CR 667	City of Newark	N/A	N/A	2.34
<b>Chancellor Avenue</b>	CR 601	City of Newark	Elizabeth Avenue, Gordon Court	Stuyvesant Avenue	2.21
<b>Ferry Street</b>	N/A	City of Newark	Market Street	Wilson Avenue	0.61
<b>Springfield Avenue</b>	CR 510, CR 603, NJ 124	City of Newark	N/A	N/A	5.43
<b>Bergen Street</b>	N/A	City of Newark	1st Street, West Market Street	Chancellor Avenue	3.13
<b>Broad Street</b>	CR 506 Spur	City of Newark	Bloomfield Place	Grant Street, University Avenue	0.38
<b>University Avenue</b>	N/A	City of Newark	Broad Street, Grant Street	Market Street	0.83
<b>Market Street</b>	CR 510	City of Newark	Springfield Avenue	Jackson Street	1.20
<b>Frelinghuysen Avenue</b>	NJ 27	City of Newark	Emmet Street	Newark Avenue	2.55

Road Name	County/NJ/US Route	Municipality	Start Point	End Point	Length (Miles)
<b>Broad Street</b>	N/A	City of Newark	Broad Street / Kenneth A. Gibson Blvd	Emmet Street, Emmett Street	0.73
<b>Broad Street / Kenneth A. Gibson Blvd</b>	N/A	City of Newark	Market Street	Broad Street	0.41
<b>Washington Avenue</b>	CR 506, NJ 7	Township of Belleville	Broadway	Walnut Street	3.17
<b>Broad Street</b>	CR 509, CR 663	Township of Bloomfield	N/A	N/A	3.14
<b>Bloomfield Avenue</b>	CR 506, CR 506 Spur	Township of Bloomfield	N/A	N/A	6.90
<b>Grove Street</b>	CR 509	Township of Bloomfield	North Grove Street	Florence Avenue, Watsessing Avenue	0.71
<b>West Passaic Avenue</b>	CR 622	Township of Bloomfield	Broad Street	Darling Avenue, Kingsland Street	0.93
<b>Pompton Avenue</b>	NJ 23	Township of Cedar Grove	N/A	N/A	4.21
<b>Main Street</b>	CR 659	Township of City of Orange	North Essex Avenue, South Essex Avenue	Mount Pleasant Avenue, Renna Plaza	0.67
<b>Scotland Road</b>	CR 638	Township of City of Orange	High Street, Main Street	South Orange Avenue, Valley Street	2.36
<b>South Essex Avenue</b>	N/A	Township of City of Orange	Main Street, North Essex Avenue	Carteret Place, Central Avenue, Jackson Street	0.47
<b>High Street</b>	CR 638	Township of City of Orange	Main Street, Scotland Road	Washington Street	0.80
<b>Stuyvesant Avenue</b>	CR 619	Township of Irvington	N/A	N/A	3.05
<b>Coit Street</b>	CR 509	Township of Irvington	Grove Street, Welland Avenue	Chestnut Avenue	0.55
<b>Grove Street</b>	CR 509	Township of Irvington	South Grove Street	Coit Street, Welland Avenue	2.53
<b>East Northfield Road</b>	CR 508	Township of Livingston	N/A	N/A	0.13
<b>Columbia Turnpike</b>	CR 510	Township of Livingston	N/A	N/A	1.48
<b>West Mount Pleasant Avenue</b>	NJ 10	Township of Livingston	N/A	N/A	2.56
<b>South Livingston Avenue</b>	CR 527, CR 649	Township of Livingston	East Mount Pleasant Avenue, North Livingston Avenue, West Mount Pleasant Avenue	East Hobart Gap Road, John F. Kennedy Parkway, West Hobart Gap Road	1.91
<b>East Cedar Street</b>	CR 527	Township of Livingston	Old Short Hills Road	N/A	0.47
<b>East Mount Pleasant Avenue</b>	NJ 10	Township of Livingston	North Livingston Avenue, South Livingston Avenue, West Mount Pleasant Avenue	Mount Pleasant Avenue, Nance Road	1.53

Road Name	County/NJ/US Route	Municipality	Start Point	End Point	Length (Miles)
North Livingston Avenue	CR 527	Township of Livingston	East Mount Pleasant Avenue, South Livingston Avenue, West Mount Pleasant Avenue	N/A	1.09
Prospect Street	CR 665	Township of Maplewood	Springfield Avenue	South Orange Avenue	1.97
John F. Kennedy Parkway	CR 649	Township of Millburn	N/A	N/A	3.84
Old Short Hills Road	CR 527	Township of Millburn	East Cedar Street	Main Street	3.04
Main Street	CR 527, CR 577	Township of Millburn	Old Short Hills Road	Bleeker Street	0.72
Morris Turnpike	CR 527, NJ 124	Township of Millburn	Baltusrol Way, Morris Avenue	North Service Road, South Service Road, South Terrace	0.87
Grove Street	CR 623	Township of Montclair	Bloomfield Avenue, Elm Street	N/A	3.30
Orange Road	N/A	Township of Montclair	Bell Street, Bloomfield Avenue	Harrison Avenue, Union Street	0.47
Harrison Avenue	N/A	Township of Montclair	Orange Road, Union Street	Franklin Avenue	1.00
Bloomfield Avenue	CR 506, CR 527, NJ 159	Township of West Caldwell	N/A	N/A	4.62
Central Avenue	CR 631	Township of West Caldwell	Bloomfield Avenue	Grandview Avenue	2.16
Northfield Avenue	CR 508	Township of West Orange	N/A	N/A	0.89
Mount Pleasant Avenue	CR 577, CR 660, NJ 10	Township of West Orange	N/A	N/A	3.11
Washington Street	CR 671	Township of West Orange	N/A	N/A	0.44
Franklin Avenue	N/A	Township of West Orange	N/A	N/A	0.72
Pleasant Valley Way	CR 636	Township of West Orange	Lakeside Avenue	Curtis Avenue, Hooper Avenue, Lenape Trail	1.68
Pleasant Valley Way	CR 636	Township of West Orange	Elmwood Avenue, Lenape Trail	Cherry Lane, Northfield Avenue	2.11



Figure 12: Essex County Regional Network



- Proposed NJTPA Network (0.5-mi buffer)
- NJ TRANSIT Rail Lines
- Bus Terminals
- Regionally Significant Trails**
- Existing
- Proposed
- Other Trails and Bike Lanes**
- Existing
- Proposed

