

Appendix H

Existing Conditions, Pedestrian Facilities

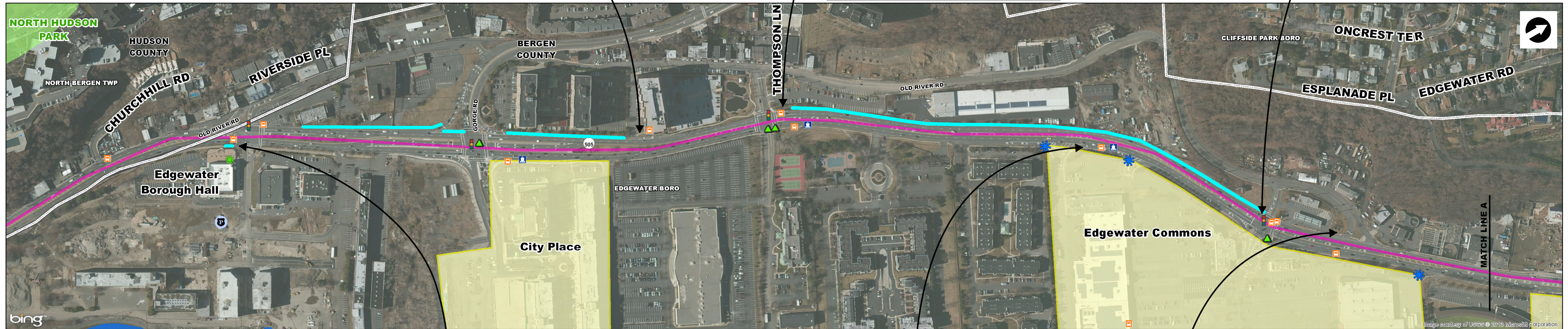
Pedestrian crossing mid-block



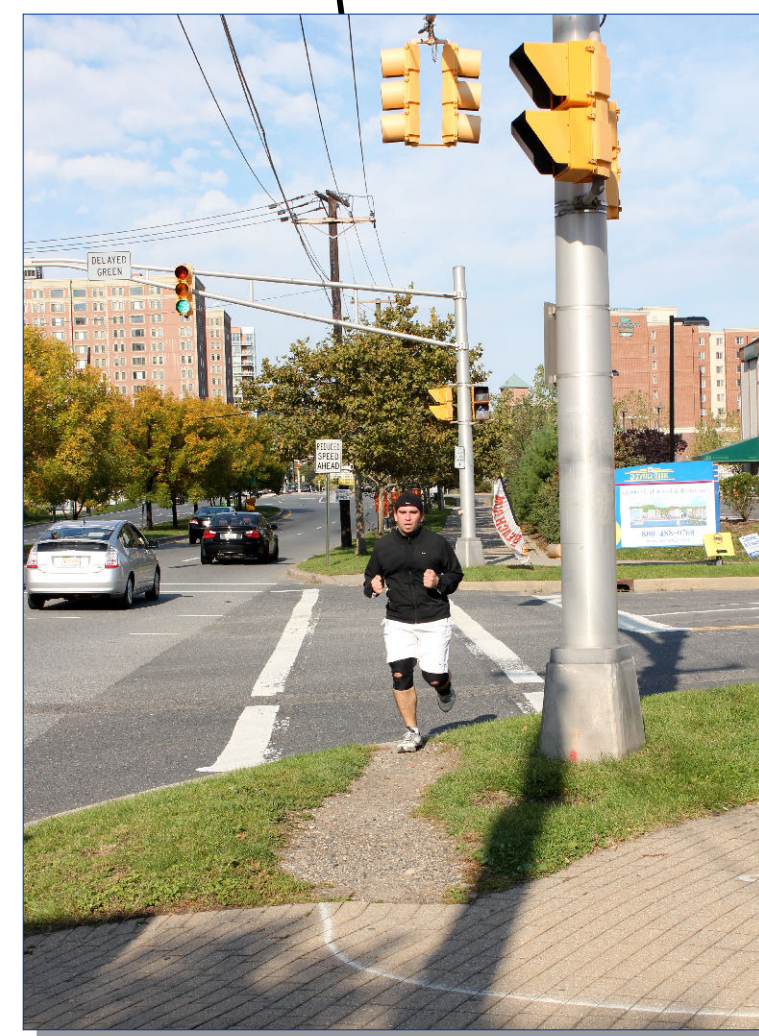
Pedestrians not using crosswalk 50 feet away



Missing sidewalk



Missing curb ramp and sidewalk



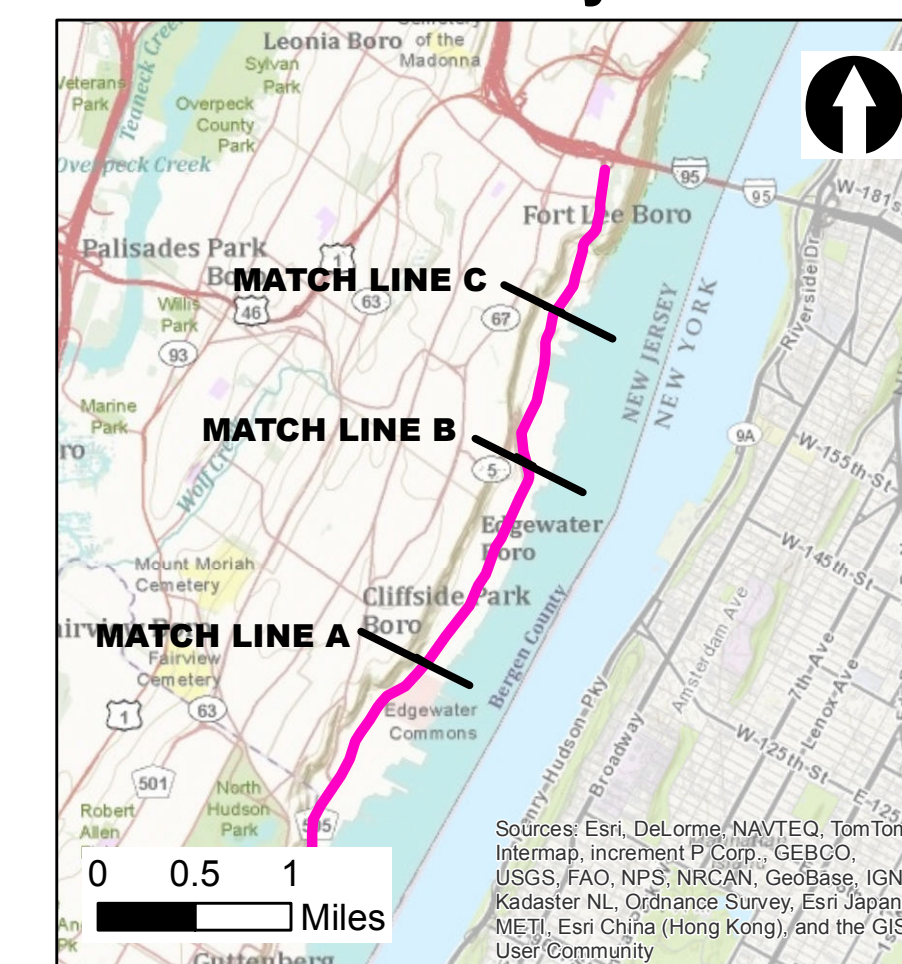
Crosswalk too far from River Road



Pedestrians not using crosswalk 250 feet away



Location of Study Corridor



Legend

- Study Corridor
- Municipality Boundary
- County Boundary
- Parcel Boundary
- NJDEP Wetland
- Park
- ✱ Municipal Building
- Police Station
- Fire Station
- ▶ School
- Shopping Center
- Traffic Signal
- NJ Transit Bus Stop
- ⚓ Marina and Ferry Terminal
- Ferry Shuttle Stop
- ▲ Pedestrian Crash
- ✱ Missing Sidewalk
- ✱ Hudson River Walkway Signed Connection



Sources:
 Base Mapping - Microsoft Corp. 2008, ESRI web server.
 Wetland - NJDEP 2007; Parks - LBG, 2012;
 Hospital and Bergen County Parcels - NJ Office of Information Technology (NJGIT), 2008, 2011;
 Bus/Ferry Stops - LBG and Bergen County, 2012.
 Pedestrian Crashes - Rutgers Plan 4 Safety

River Road/Hudson Waterfront Corridor Strategy: A Phase Two Study

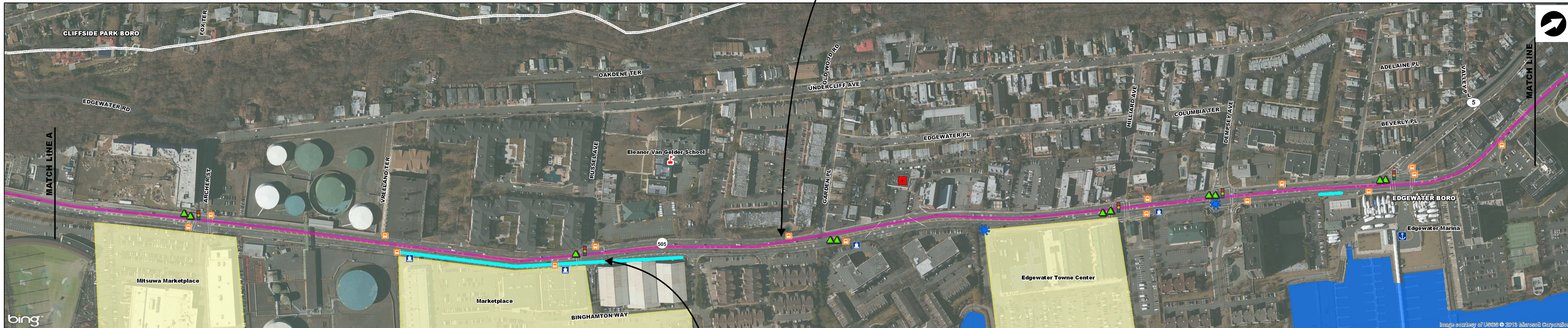
Existing Conditions Pedestrian Facilities

Sheet 1

February 2013



Pedestrians crossing mid-block to access bus stop



Missing sidewalk and concrete barrier requires pedestrians to use roadway shoulder



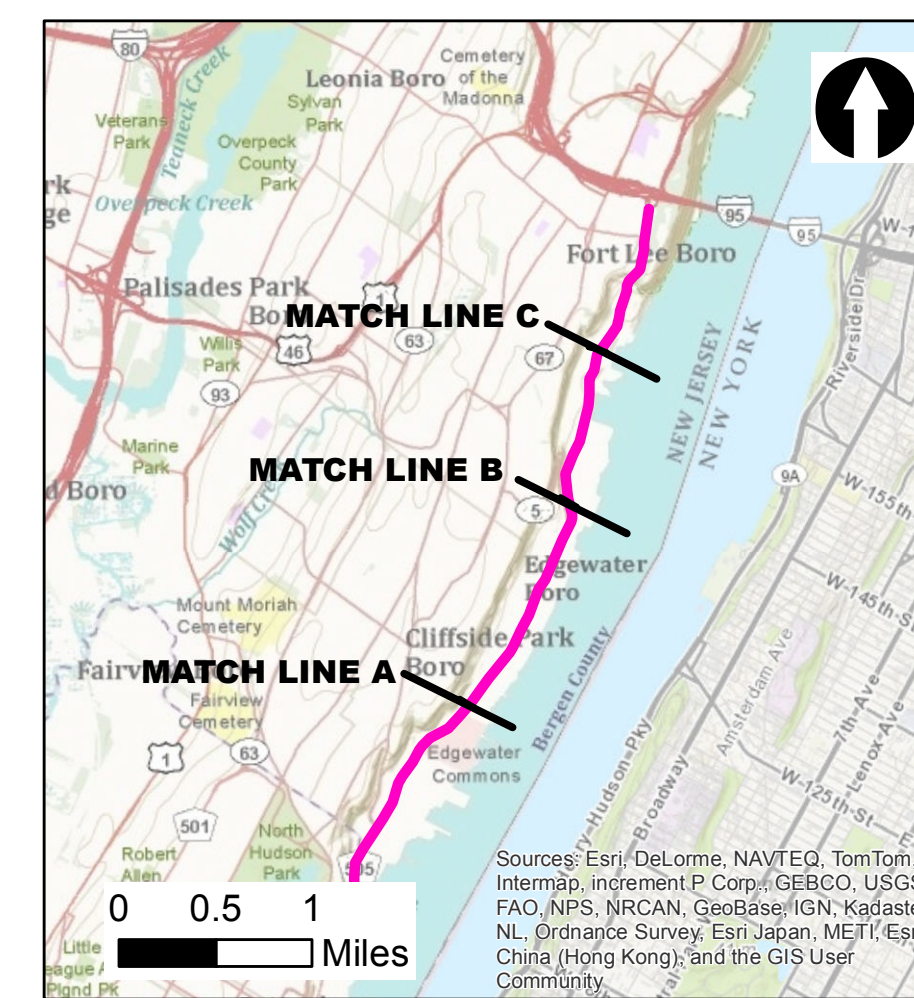
Legend

- Study Corridor
- Municipality Boundary
- County Boundary
- Parcel Boundary
- NJDEP Wetland
- Park
- ✱ Municipal Building
- P Police Station
- Fire Station
- ▲ School
- Shopping Center
- Traffic Signal
- NJ Transit Bus Stop
- ⚓ Marina and Ferry Terminal
- ⚓ Ferry Shuttle Stop
- ▲ Pedestrian Crash
- Missing Sidewalk
- ✱ Hudson River Walkway Signed Connection



Sources:
 Base Mapping - Microsoft Corp. 2008, ESRI web server.
 Wetland - NJDEP 2007; Parks - LBG, 2012;
 Hospital and Bergen County Parcels - NJ Office of Information Technology (NJGIT), 2008, 2011;
 Bus/Ferry Stops - LBG and Bergen County, 2012.
 Pedestrian Crashes - Rutgers Plan 4 Safety

Location of Study Corridor



River Road/Hudson Waterfront Corridor Strategy: A Phase Two Study

Existing Conditions Pedestrian Facilities Sheet 2



February 2013

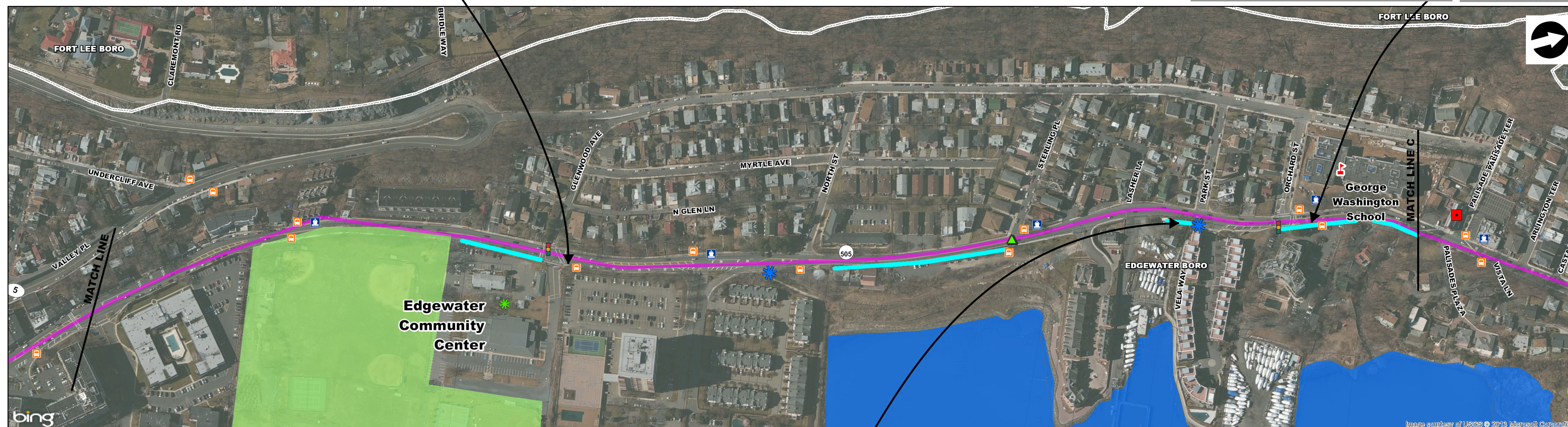




Poor sidewalk condition by bus stop



No access to bus stop due to missing sidewalk



Pedestrian walking on roadway due to missing sidewalk



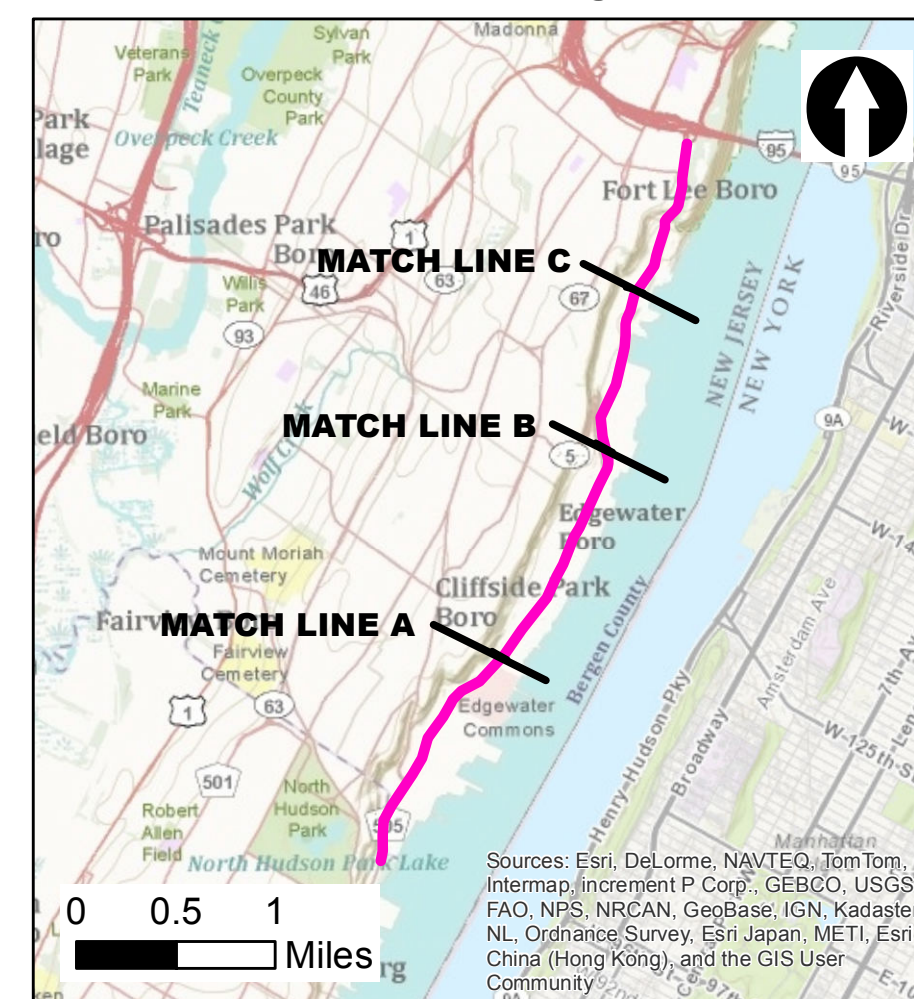
Legend

- Study Corridor
- Municipality Boundary
- County Boundary
- Parcel Boundary
- NJDEP Wetland
- Park
- ✱ Municipal Building
- Police Station
- Fire Station
- ▴ School
- Shopping Center
- 🚦 Traffic Signal
- 🚌 NJ Transit Bus Stop
- 🚢 Marina and Ferry Terminal
- 🚏 Ferry Shuttle Stop
- 🚶 Pedestrian Crash
- Missing Sidewalk
- ✱ Hudson River Walkway Signed Connection



Sources:
 Base Mapping - Microsoft Corp. 2008, ESRI web server.
 Wetland - NJDEP 2007; Parks - LBG, 2012;
 Hospital and Bergen County Parcels - NJ Office of Information Technology (NJGIT), 2008, 2011;
 Bus/Ferry Stops - LBG and Bergen County, 2012.
 Pedestrian Crashes - Rutgers Plan 4 Safety

Location of Study Corridor



River Road/Hudson Waterfront Corridor Strategy: A Phase Two Study

Existing Conditions Pedestrian Facilities
 Sheet 3

RBA February 2013

NJTPA
 NORTH JERSEY TRANSPORTATION PLANNING AUTHORITY

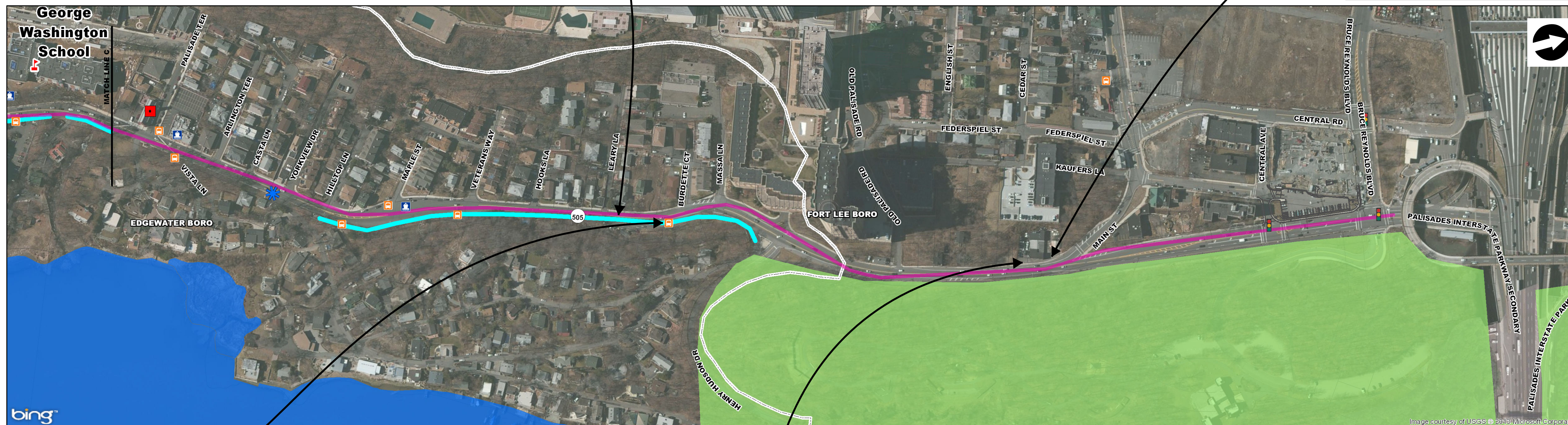




No sidewalk along northbound River Road and pedestrians crossing mid-block



Cars parked on sidewalk



Missing sidewalk with poor access to bus stop



Overgrown shrubs blocking sidewalk

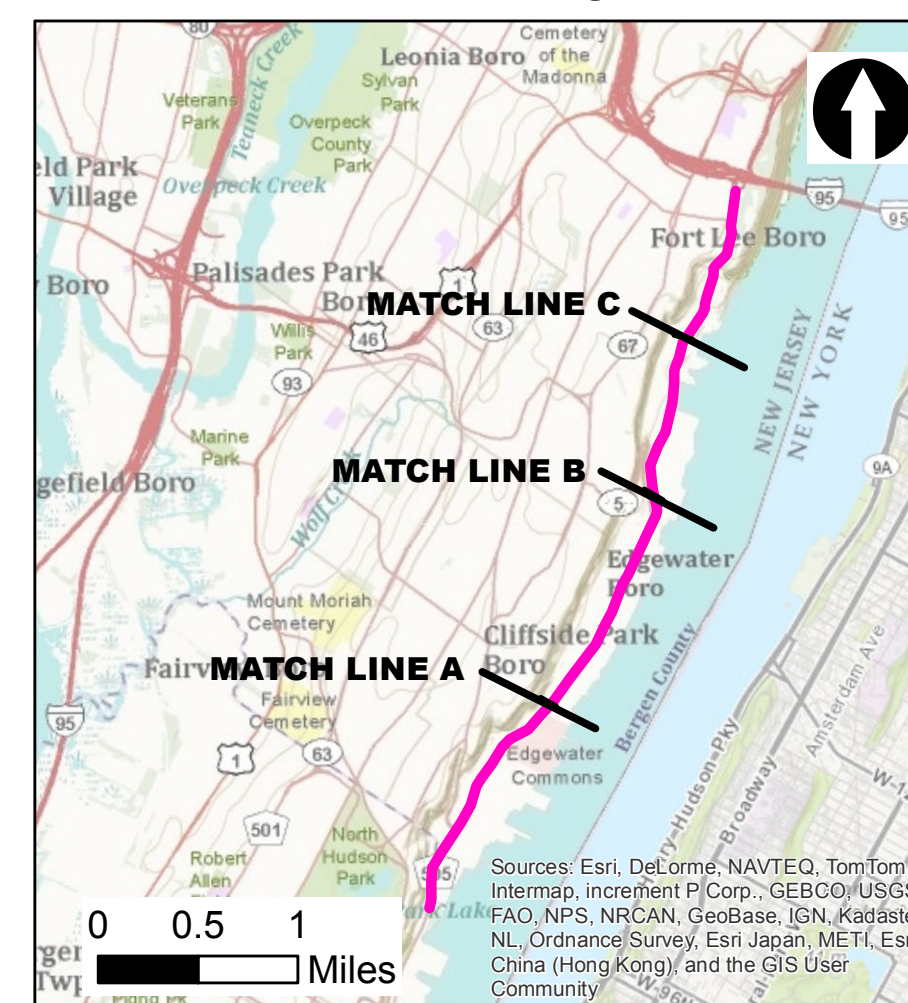
Legend

- Study Corridor
- Municipality Boundary
- County Boundary
- Parcel Boundary
- NJDEP Wetland
- Park
- ✱ Municipal Building
- Police Station
- Fire Station
- ▲ School
- Shopping Center
- ⬇ NJ Transit Bus Stop
- ⬇ Marina and Ferry Terminal
- ⬇ Ferry Shuttle Stop
- ▲ Pedestrian Crash
- Missing Sidewalk
- ✱ Hudson River Walkway Signed Connection
- ⬇ Traffic Signal



Sources:
 Base Mapping - Microsoft Corp. 2008, ESRI web server.
 Wetland - NJDEP 2007; Parks - LBG, 2012;
 Hospital and Bergen County Parcels - NJ Office of Information Technology (NJGIT), 2008, 2011;
 Bus/Ferry Stops - LBG and Bergen County, 2012.
 Pedestrian Crashes - Rutgers Plan 4 Safety

Location of Study Corridor



River Road/Hudson Waterfront Corridor Strategy: A Phase Two Study

Existing Conditions Pedestrian Facilities
 Sheet 4