



Oradell Avenue Bridge

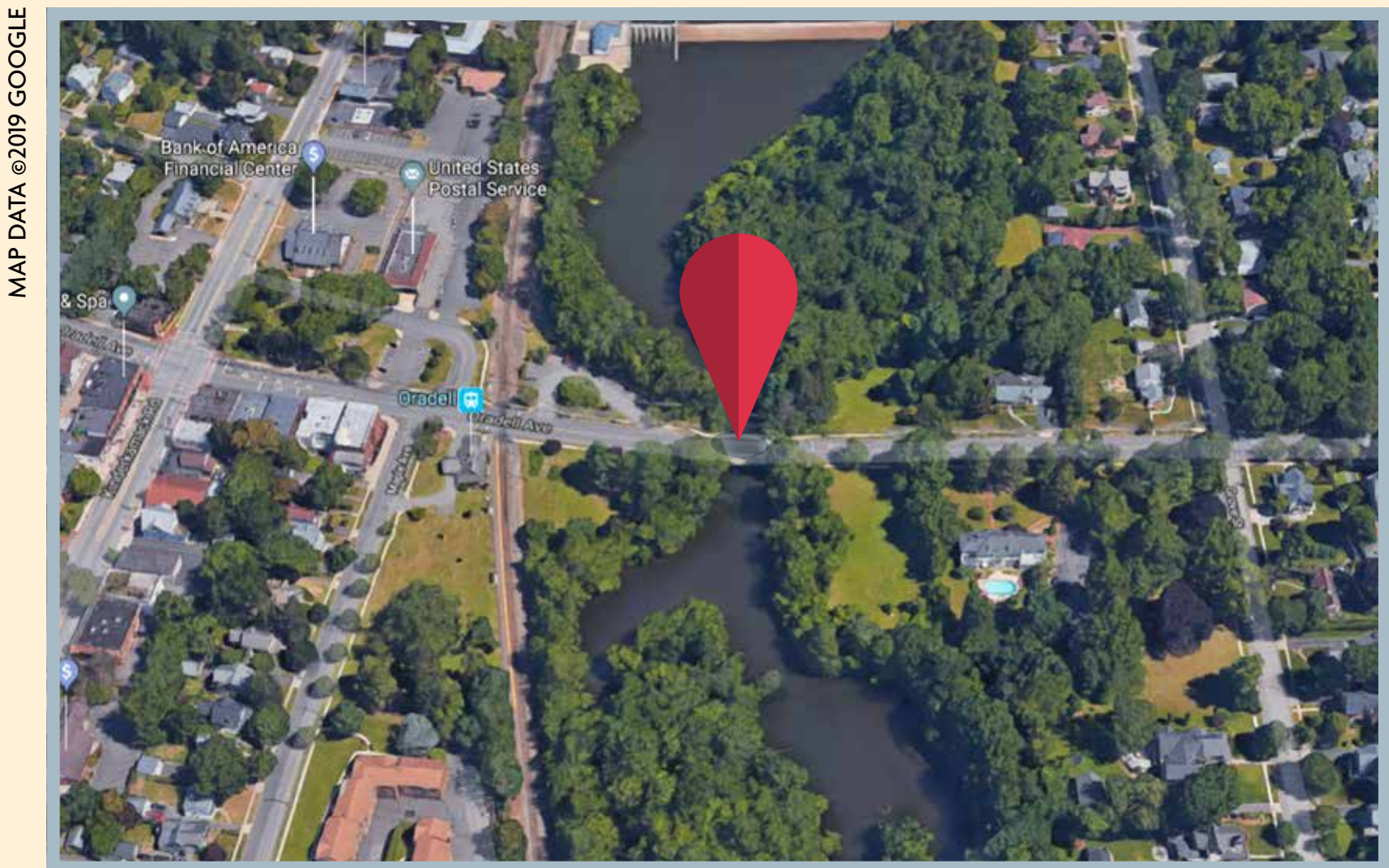
FUNDING RECOMMENDATION: \$450,450

LOCATION: Borough of Oradell, Bergen County

BERGEN COUNTY successfully applied for a \$450,450 grant for this project through the NJTPA’s Fiscal Year 2020 Local Capital Project Delivery Program. This project will investigate options for replacing or rehabilitating the Oradell Avenue Bridge over the Hackensack River in the Borough of Oradell.

PROJECT DETAILS: This study will identify and compare options for the bridge, which is located just south of the Oradell Reservoir. There is severe rust on the underside of the bridge and some cracks in the concrete, and the bridge’s supports are also significantly rusted. The bridge is 28 feet, 9 inches wide but should be 32 feet wide to accommodate the vehicle volume and cyclists.

ABOUT THE PROJECT AREA: Built in 1904, the two-lane bridge serves as a major connector for a residential neighborhood and Oradell’s downtown business district.



Between 17,000 and 25,000 vehicles travel across the bridge daily, according to county traffic counts. The bridge underwent a major reconstruction in 1970 and was rehabilitated in 1995. The bridge sees heavy vehicle, pedestrian and bicycle traffic because of its close proximity to Oradell’s downtown, the NJ TRANSIT rail station and a bicycle and pedestrian path adjacent to the nearby reservoir.

