



SOMERSET COUNTY:

Great Road Bridge

FUNDING RECOMMENDATION: \$458,860

LOCATION: Montgomery Township,
Somerset County

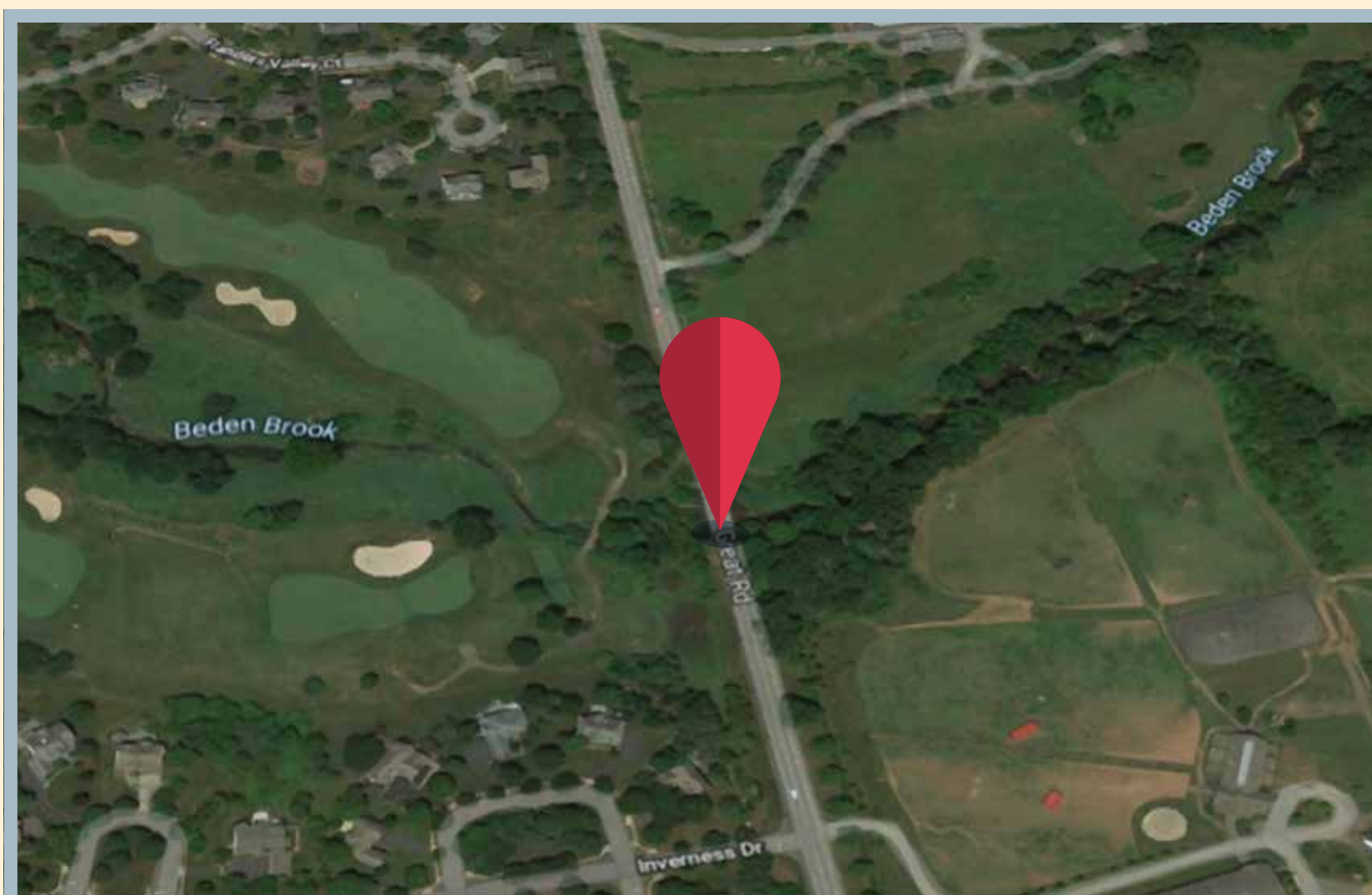
SOMERSET COUNTY successfully applied for a \$458,860 grant for this project through the NJTPA's Fiscal Year 2020 Local Capital Project Delivery Program. This project will investigate options for replacing or rehabilitating the Great Road (County Route 601) Bridge over Bedens Brook in Montgomery Township.

PROJECT DETAILS: This study will identify and compare options for the bridge. The bridge is constructed of steel beams with concrete supports. The steel beams are severely deteriorated and portions of the bridge have moderate to severe rusting.

ABOUT THE PROJECT AREA: Built in 1983, the two-lane bridge is 96 feet long. The bridge was rehabilitated in 2008 to fill the open steel grid deck with concrete and repair deck joints.



About 4,900 vehicles travel over the span daily. Great Road runs parallel to Route 206 and is used as a detour when Route 206 is closed due to crashes. The bridge is located adjacent to Cherry Valley Country Club, Great Road Farm and residential neighborhoods. It is about two miles from the Princeton Airport.



MAP DATA ©2019 GOOGLE

