

- MILLING AND RESURFACING
- CONCRETE SIDEWALK RECONSTRUCTION
- TREE PIT
- DIRECTION OF TRAVEL
- PROPOSED TRAFFIC SIGNAL POLES
- SIGNALIZED INTERSECTION

SCALE IN FEET
20' 10' 0' 20' 40'

CITY OF NEWARK

BROAD STREET FROM EMMET STREET TO THOMAS STREET
INTERSECTION SAFETY IMPROVEMENTS

PRELIMINARY ENGINEERING PLAN

MUNICIPALITY: CITY OF NEWARK COUNTY OF ESSEX

DRAWN: _____ DATE: 1/2019 SCALE: AS SHOWN SHEET _____ OF _____

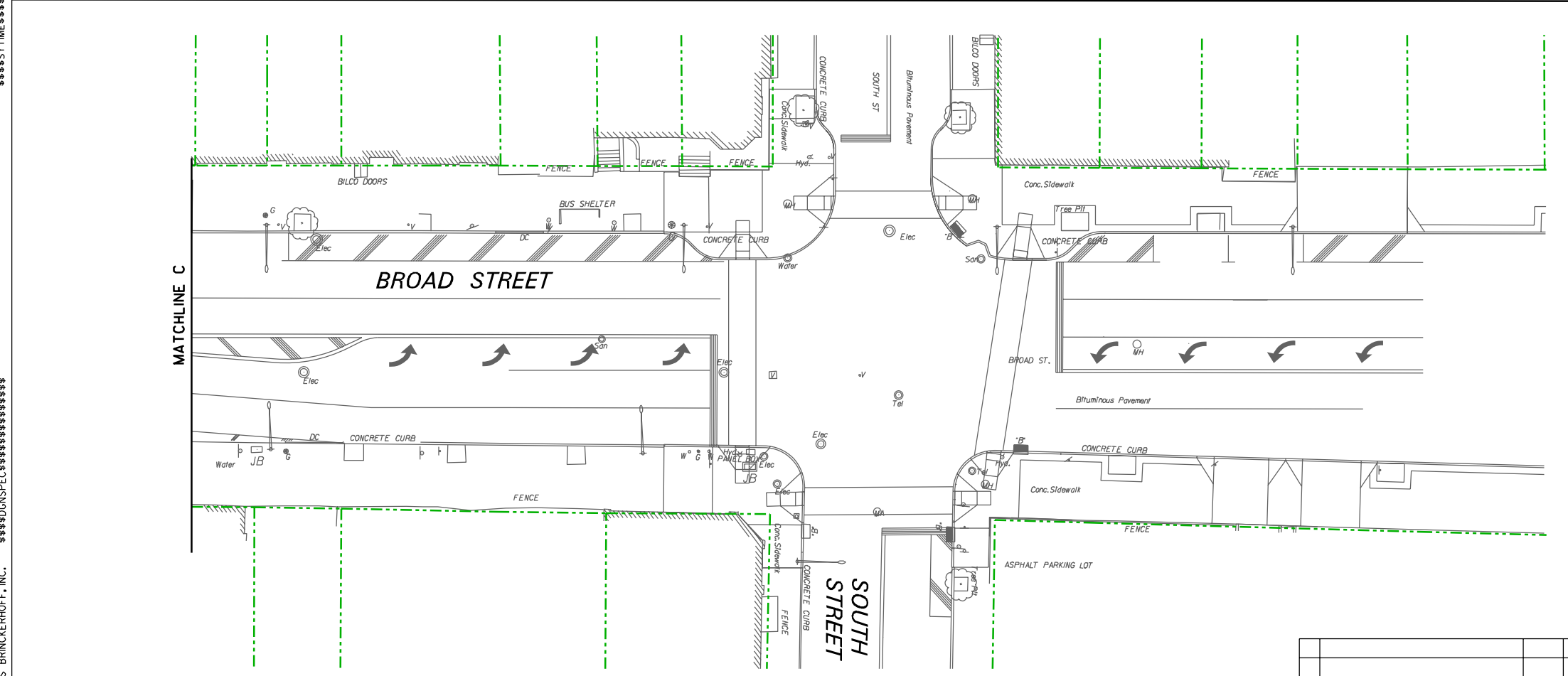
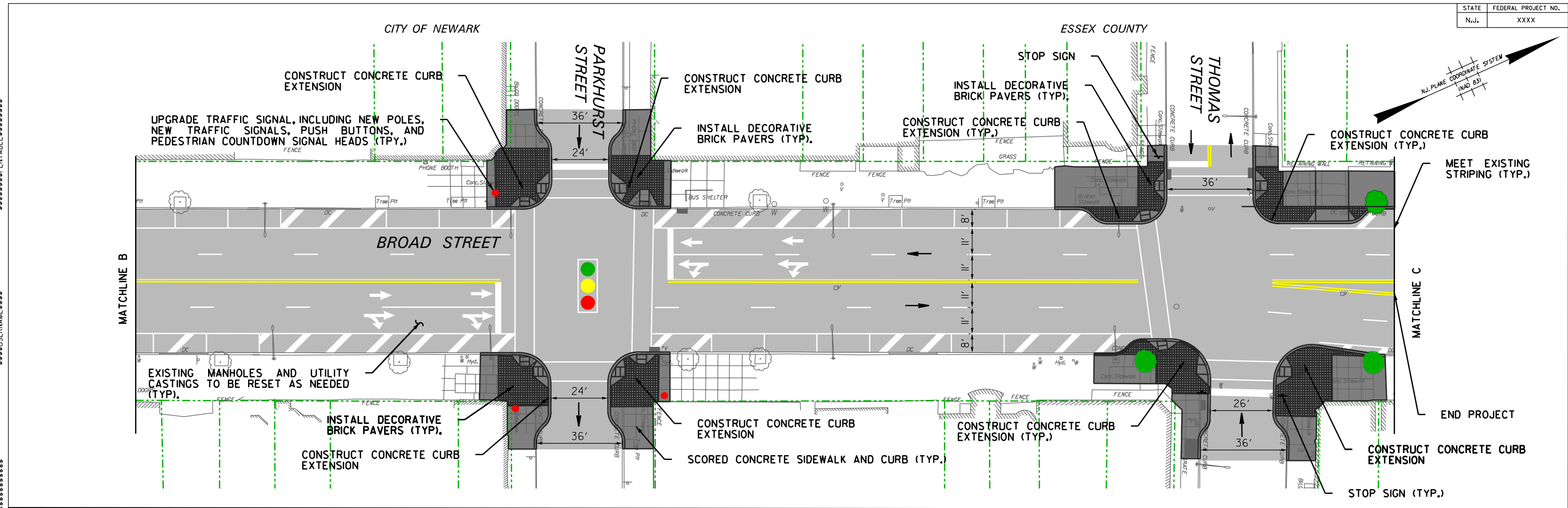
WSP USA, INC.
TWO GATEWAY CENTER, 10TH FL. NEWARK, NJ 07102

CERTIFICATION OF AUTHORIZATION NO. 24GA28029800

XX

REVISION DESCRIPTION	BY	C'K'D	DATE

PARSONS BRINCKERHOFF, INC. \$\$\$\$\$\$PENTABLE\$\$\$\$\$ \$\$\$\$\$\$SYTIME\$\$\$\$\$ \$\$\$\$\$\$USERNAME\$\$\$\$\$



- MILLING AND RESURFACING
- CONCRETE SIDEWALK RECONSTRUCTION
- TREE PIT
- DIRECTION OF TRAVEL
- PROPOSED TRAFFIC SIGNAL POLES
- SIGNALIZED INTERSECTION



CITY OF NEWARK

BROAD STREET FROM EMMET STREET TO THOMAS STREET INTERSECTION SAFETY IMPROVEMENTS

PRELIMINARY ENGINEERING PLAN

MUNICIPALITY: CITY OF NEWARK COUNTY OF ESSEX

DRAWN: _____ DATE: 1/2019 SCALE: AS SHOWN SHEET _____ OF _____

WSP USA, INC.
TWO GATEWAY CENTER, 10TH FL. NEWARK, NJ 07102

CERTIFICATION OF AUTHORIZATION NO. 24GA28029800

REVISION DESCRIPTION	BY	C'K'D	DATE

DATE: _____

PARSONS BRINCKERHOFF, INC. \$\$\$\$\$\$SYTIME\$\$\$\$\$\$ \$\$\$\$\$\$PENTABLE\$\$\$\$\$\$ \$\$\$\$\$\$USERNAME\$\$\$\$\$\$